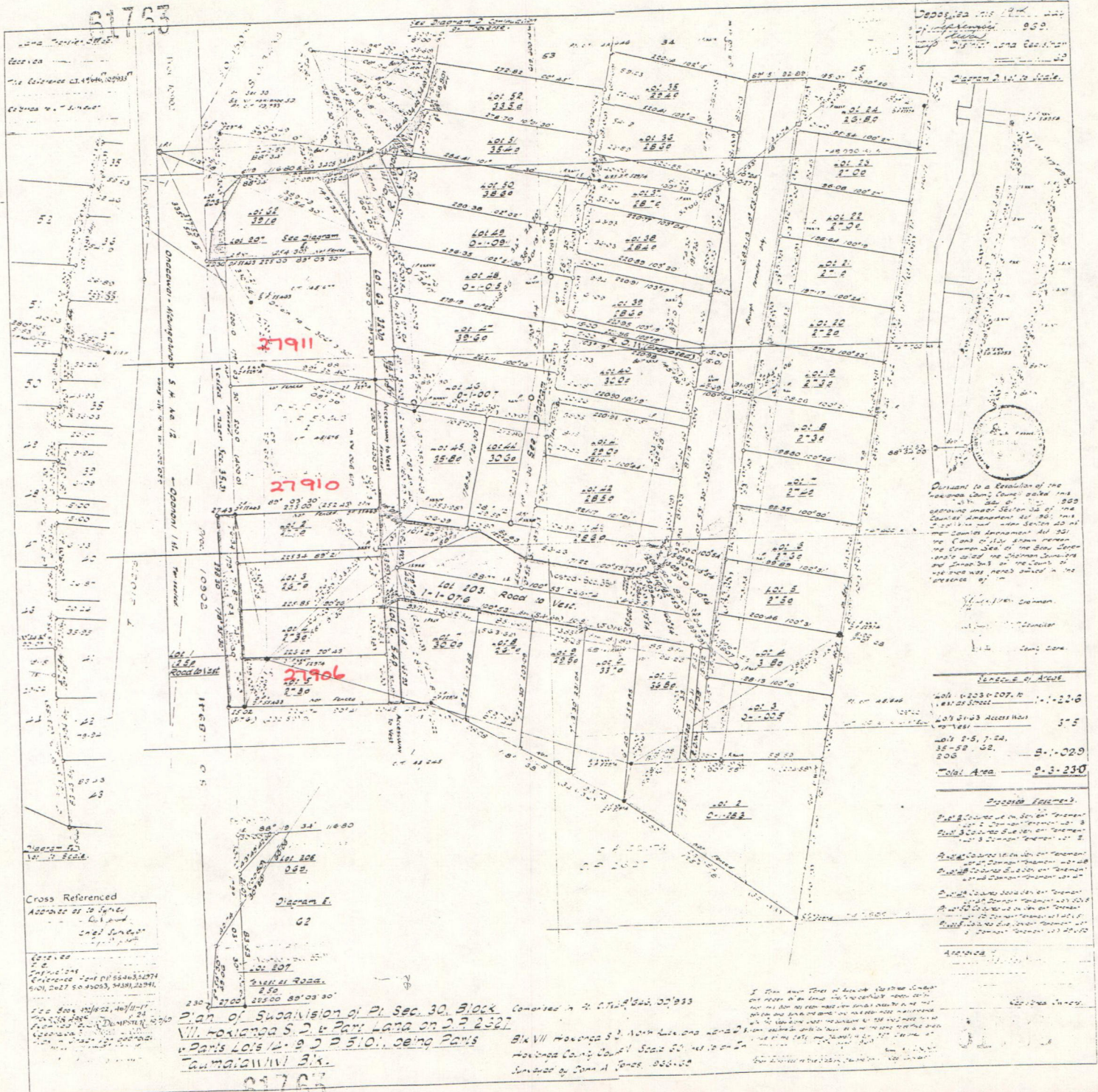


61763

DP 61763



Ordinance No. 1234 of the  
 Council of the City of  
 Honolulu, Hawaii, passed on  
 the 15th day of May, 1953,  
 providing under Section 26 of the  
 Charter Amendment Act No. 1 of  
 1951 that the said Section 26 of  
 the Charter Amendment Act No. 1 of  
 1951 shall apply to the said  
 Ordinance No. 1234 of the  
 Council of the City of Honolulu,  
 and that the said Ordinance No.  
 1234 shall be deemed to have  
 been passed on the 15th day of  
 May, 1953.

Witness my hand and seal of  
 the City of Honolulu, Hawaii,  
 this 15th day of May, 1953.

REMARKS ON AREA	
Lot 1-100	1.1-22.6
Lot 101-102	3-5
Lot 103-104	8-1-22.9
<b>Total Area</b>	<b>2.3-230</b>

- SUBJECT MATTER**
- Part of Section 30, Block 30, Subdivision of Paris Land on P.P. 2527
  - Part of Section 30, Block 30, Subdivision of Paris Land on P.P. 2527
  - Part of Section 30, Block 30, Subdivision of Paris Land on P.P. 2527
  - Part of Section 30, Block 30, Subdivision of Paris Land on P.P. 2527
  - Part of Section 30, Block 30, Subdivision of Paris Land on P.P. 2527
  - Part of Section 30, Block 30, Subdivision of Paris Land on P.P. 2527
  - Part of Section 30, Block 30, Subdivision of Paris Land on P.P. 2527
  - Part of Section 30, Block 30, Subdivision of Paris Land on P.P. 2527
  - Part of Section 30, Block 30, Subdivision of Paris Land on P.P. 2527
  - Part of Section 30, Block 30, Subdivision of Paris Land on P.P. 2527

Cross Referenced  
 Address of 12 1/2 Ave.  
 City of Honolulu  
 Legal Survey  
 1953

Plan of Subdivision of Pt. Sec. 30, Block 30, Subdivision of Paris Land on P.P. 2527  
 and Paris Lots 1/4, 3/4, 2, 3, 5, 10, being Paris Land on P.P. 2527  
 as shown on Diagram E



TOP 7569