

# Pink<sup>®</sup> Batts<sup>®</sup> SnugFloor<sup>®</sup> Insulation

---

## Product and Installation Guide

WAIMAKARIRI DISTRICT COUNCIL  
Plans and specifications APPROVED in accordance  
with the Building Act 2004, clause 49 and the Building  
Regulations 1992, Clause 3  
BC240589 22/08/2024 Chrisk

# Pink® Batts® SnugFloor® Insulation

## Product and Insulation Guide

### Product Specifications

PRODUCT GLASS WOOL RANGE	Product Code	Size (mm)	Nominal Stabilised Thickness (mm)	Nominal Total Area Per Bale (m <sup>2</sup> )	Approx. Coverage Per Bale* (m <sup>2</sup> )	Eco Choice Aotearoa	Environmental Product Declaration	BRANZ Appraisal Number
<b>FLOOR – ACOUSTIC INSULATION</b>								
Pink® Batts® Silencer® Mid Floor†	7310051	1140 x 432	150	4.9	5.2		✓	x
<b>FLOOR – THERMAL INSULATION</b>								
R2.6 Pink® Batts® SnugFloor® Narrow†	7131451	1220 x 480	110	8.8	8.2	✓	✓	632
R2.6 Pink® Batts® SnugFloor® Wide†	7131601	1220 x 580	110	10.6	10.6	✓	✓	632
R3.2 Pink® Batts® SnugFloor® Narrow†	7134832	1220 x 480	140	8.2	7.7	✓	✓	632
R3.2 Pink® Batts® SnugFloor® Wide†	7135832	1220 x 580	140	8.5	8.5	✓	✓	632

### Application

Pink® Batts® SnugFloor® insulation is a lightweight flexible glass wool insulation product designed to:

- Reduce heat loss in new and existing homes with suspended floors
- Eliminate draughts through exposed floorboards
- Assist in meeting the requirements of the New Zealand Building Code (NZBC) for different designs and environments

### Features and Benefits

- High R-values – R-values up to R3.2 to assist in keeping homes above 18°C as per the World Health Organisation’s recommendation for a healthy and comfortable home
- Easy to install – lightweight, flexible and simple design makes the installation fast and easy
- Internationally certified for Indoor Air Quality – gives assurance that products meet strict chemical emissions limits
- Non-combustible – will not easily burn in the event of a fire
- Made from over 80% recycled glass-making sustainable use of waste
- Designed for New Zealand building conditions

\* Coverage relates to standard structures (ie with framing allowance) therefore actual coverage may vary.

† Product does not have Lifetime Warranty.



# Pink® Batts® SnugFloor® Insulation

## Product and Insulation Guide

### Environment

Pink® Batts® insulation is a sustainable and energy efficient product.

- Manufactured using over 80% recycled glass, making sustainable use of waste
- Energy used during the manufacture of Pink® Batts® products is offset by the energy saved by a home fully insulated with Pink® Batts® products within 3-15 months<sup>1</sup>
- Manufactured in New Zealand, reducing shipping distances
- Recyclable packaging

### Green Star NZ Credits

Green Star is a comprehensive environmental rating system for buildings; materials with certain attributes can receive points that contribute to the overall score of a rated home.

New Zealand Green Building Council (NZGBC) does not test or certify products; they rely on the work done by third party certification bodies and eco labels like Eco Choice Aotearoa. Further information is available at [nzgbc.org.nz](http://nzgbc.org.nz).

### Eco Choice Aotearoa

Pink® Batts® SnugFloor® insulation products have Eco Choice Aotearoa New Zealand Accreditation (refer to Product Specifications on page 1 for accredited products)

Independently assessed for:

- **Waste Minimisation:** Recycled content, and recycling of process waste
- **Energy Management:** Effective energy management policies and procedures
- **Manufacturing Process:** Not manufactured using blowing agents with a Global Warming Potential (GWP) or Ozone Depleting Potential (ODP)
- **Product Characteristics:** Durability and performance



While only BRANZ appraised products are eligible for Eco Choice Aotearoa, all Pink® Batts® thermal insulation products are manufactured in the same environmentally considerate way.

<sup>1</sup> (Beca Carter Hollings & Ferner Ltd, Energy Economics of Fibreglass Insulation, 2005)



# Pink® Batts® SnugFloor® Insulation

## Product and Insulation Guide

### Health and Safety

#### Product Safety

Pink® Batts® insulation is a non-hazardous, safe product.

- IARC (International Agency for Research on Cancer) classifies the glass wool formulation used to manufacture Pink® Batts® products as Group 3: 'Not classifiable as to its carcinogenicity to humans'. This is the same classification as caffeine, tea, hair colouring, chlorinated drinking water and saccharin
- Pink® Batts® insulation is bio-soluble. In the unlikely event any fibres are inhaled into the lungs they will dissolve in the body fluids and be cleared from the body

#### Indoor Air Quality

- Pink® Batts® insulation is certified under the GREENGUARD Certification Program. Being certified for indoor air quality gives an assurance that products meet strict chemical emissions limits (including minimal levels of VOCs and formaldehyde), to help create healthier indoor environments

#### General Health

- Pink® Batts® insulation will assist in meeting the World Health Organisation recommendation for houses to be maintained at a minimum temperature of 18°C to provide a healthy and comfortable home
- A Wellington School of Medicine study found insulated houses resulted in families with fewer sick days and the economic benefit was double the initial cost of the insulation<sup>2</sup>

<sup>2</sup> Howden-Chapman, P. et al. "Effect of insulating existing houses on health inequality: cluster randomised study in the community" British Medical Journal, 2007, p334:460

### Technical Data

Properties	Result		Test/Method/Standard	Test Results
Combustibility	Non-Combustible	✓	AS/NZS 1530.1:1994	Group Number 1S
Early Fire Hazards		✓	AS/NZS 1530.3:1993 - Ignitability (Range 0-20) - Spread of Flame Index (Range 0-10) - Heat Evolved Index (Range 0-10) - Smoke Developed Index (Range 0-10)	= 0 = 0 = 0 = 0-1
R-value	Various*	✓	AS/NZS 4859.1:2018	
Corrosion	Non-Corrosive	N/A	AS/NZS 4859.1:2018-Glass wool exempt	
Moisture Absorption	Non-Hygroscopic	N/A	AS/NZS 4859.1:2018-Glass wool exempt	
Vermin Resistance	No Food Source	✓	AS/NZS 4859.1:2018-Glass wool exempt	

\* Stated thicknesses are values at which stated R-values are achieved and are likely to be minimum values. See table on page 1.



# Pink® Batts® SnugFloor® Insulation

## Product and Insulation Guide

---

### Acoustic Properties

Pink® Batts® insulation will assist with noise control, however penetrations in ceilings and walls will transmit sound readily. Superior noise control can be achieved by using Pink® Batts® insulation products in conjunction with good acoustic design.

---

### New Zealand Building Code (NZBC) and Limitations

Pink® Batts® SnugFloor® insulation when used, installed and maintained in accordance with the requirements outlined in this datasheet, will meet or contribute to meeting the following provisions of the NZBC:

#### NZBC Clause B2: Durability

Meets the requirement NZBC B2.3.1 a) 50 years and NZBC B2.3.1 b) 15 years

#### NZBC Clause E3: Internal Moisture

Contributes to meeting these requirements

#### NZBC Clause F2: Hazardous Building Materials

Meets this requirement and will not present a health hazard to people

#### NZBC Clause H1: Energy Efficiency

Contributes to meeting this requirement

### Limitations

To meet the provisions of the NZBC as outlined in this datasheet, Pink® Batts® SnugFloor® insulation MUST be:

- Installed and maintained in a dry protected environment
- Installed in a building where the provisions of NZBC E2 and E3 are met
- Installed to the requirements of NZS 4246:2016: Energy Efficiency-Installing bulk thermal Insulation in Residential Buildings

Pink® Batts® SnugFloor® insulation should NOT be crushed or compressed unless otherwise stated.

# Pink® Batts® SnugFloor® Insulation

## Product and Insulation Guide

### Installation Instructions

Correct installation with no compression or gaps is critical to ensure Pink® Batts® SnugFloor® insulation performance is not compromised.

#### Safety

Each installation is unique, so prior to installation check for all hazards that may cause injury.

- Carry out repair work without delay
- Ensure there is adequate lighting to identify any hazards
- Treat all electrical cables as live
  - turn power off when working underfloor
  - ensure damaged, exposed or hanging cables are repaired immediately
  - be careful not to cut or expose cables and wires
  - when stapling/strapping insulation, leave a 50mm gap between staples and electrical cables
  - use labels to identify location of wires, pipes and cables for future reference

- Beware of other sharp objects (protruding nails, splinters etc.), pests (bees and wasps, animals and vermin).

**Note:** Seek professional advice if you're unsure how best to isolate the hazard or have a professional installer carry out the work for you.

We recommend PinkFit® professional installers. PinkFit® are a nationwide network of professional installers who guarantee their completed installation will meet the requirements of NZS 4246:2016.

For your local PinkFit® installer call **0800 746 534** or visit [pinkbatts.co.nz/installing-pink-batts/](https://pinkbatts.co.nz/installing-pink-batts/)



# Pink® Batts® SnugFloor® Insulation

## Product and Installation Guide

### Installation

Any slight irritation to exposed skin caused by the fibres in glass wool, or through their inhalation, is harmless and temporary.

**However, for your comfort while installing, it's recommended you wear:**

- Loose fitting work clothes which cover the arms and legs
- Covered shoes
- Dust mask
- Safety glasses

**For safety while installing, it's recommended you use:**

- Cut resistant gloves (if knife is used)
- Knee pads

**For an efficient installation, the following tools are recommended:**

- Knife
- Torch
- Danband or similar strapping (>20mm wide)
- Staple gun with 10 mm galvanised staples
- Tape measure

### Pre-work checklist

Before commencing installation ensure:

- Mains power switch is off
- Underfloor area has adequate working space and lighting
- No signs of water seepage beneath bathroom floors (and other wet areas)
- Repair damaged plumbing or sewer work
- Underfloor area is dry with adequate ventilation
- If wet or damp install a polyethylene groundsheet (Moistop® 250 Underlay)

### Choosing the right product

Joist spacing	Pink® Batts® SnugFloor® Narrow	Pink® Batts® SnugFloor® Wide
Less than 450mm	✓	
Between 450mm and 550mm		✓
Greater than 550mm*		✓*

\*Product should be installed lengthwise across joists and surplus trimmed

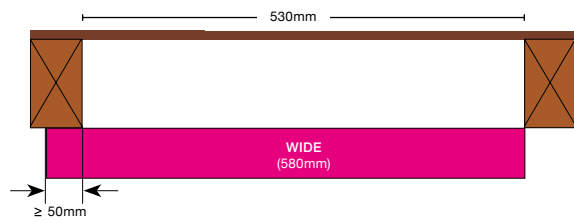
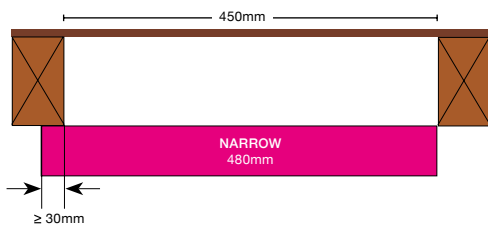


# Pink® Batts® SnugFloor® Insulation

## Product and Installation Guide

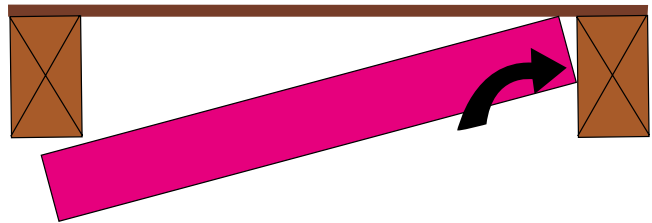
### A. Fitting detail

- Open the pack before entering underfloor area. The compressed product will expand substantially
- Start installing at the point furthest from the access point and work back towards it
- Fit width-wise between joists ensuring that there is the required overlap:
  - Pink® Batts® SnugFloor® Narrow  $\geq 30\text{mm}$
  - Pink® Batts® SnugFloor® Wide  $\geq 50\text{mm}$
- If overlap is insufficient, use wider product or fit pieces length wise between joists.

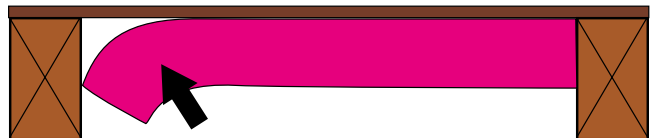


### B. Fold detail

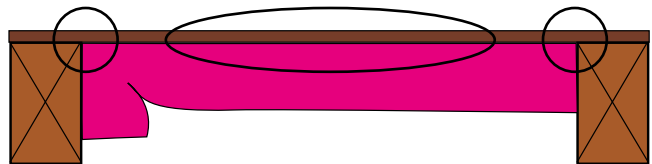
- Insert one side of the Pink® Batts® SnugFloor® segment against the joist.



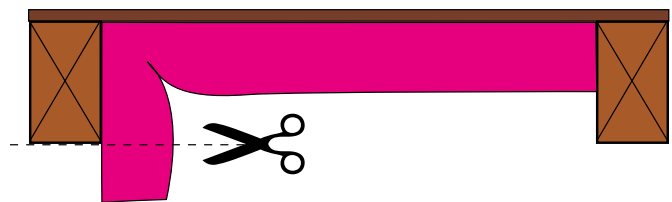
- Push the other side of the segment onto the opposing joist with a fold to create a friction fit.



- Ensure there are no gaps in corners and under the floor boards.



- The fold must not extend beneath the joist, trim if required.



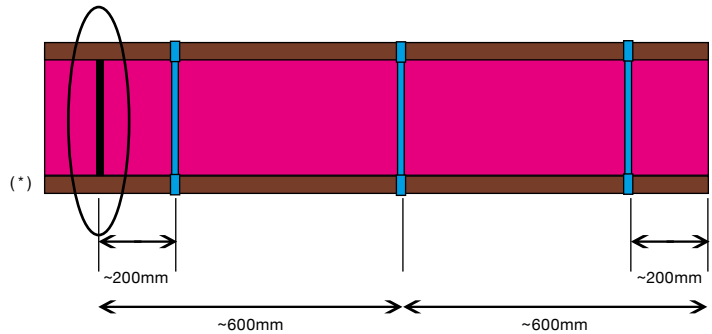
- Insulate out to under the bottom plate of the exterior wall.

# Pink® Batts® SnugFloor® Insulation

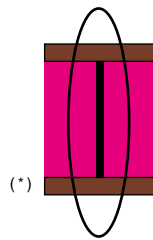
## Product and Installation Guide

### C. Secure detail

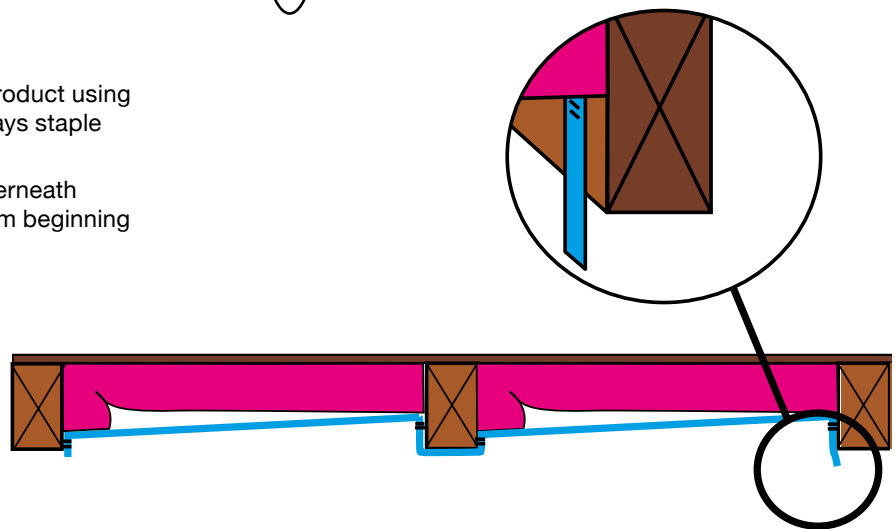
- Secure using no less than three straps per piece; in the middle of the segment and approx. 200mm from each end.



- Ensure adjoining pieces are butted together with no gaps (\*).



- Strap up the joists and against the product using two staples at each fixing point. Always staple across the tape to avoid tearing.
- There is no need to cut the tape underneath each joist. One length can be run from beginning to end.



**When installing around electrical cables ensure that you have a clear view of the joist face. Avoid stapling close to electrical wires.**

- \*Caution:** Electrical cables and equipment partially or completely surrounded with bulk thermal insulation may overheat and fail. This applies to wiring installed prior to 1989.

**Tip:** To verify Building Code Compliance, staple a product label at an easy to find location away from any hot items such as down lights or water cylinders e.g. on truss/rafter above ceiling access hole and hot water cupboard.

# Pink® Batts® SnugFloor® Insulation

## Product and Insulation Guide

---

### Storage and Maintenance

Pink® Batts® SnugFloor® should be protected from damage and weather. Store under cover in clean dry conditions. The installed product must remain dry at all times. If the product becomes wet or damp, the source of dampness should be repaired and any wet or damp insulation should be removed and replaced with new insulation of an equivalent R-value.

Note: Installing any underfloor insulation in your home with the addition of a dry heat source can create a warm, dry environment. This may lead to the drying out of unsealed timber floors.

---

### Disposal of bags

Recyclable LLDPE bags are used for packaging of Pink® Batts® insulation.  
For further details download the relevant product data sheet from [pinkbatts.co.nz](http://pinkbatts.co.nz)





Comfortech Building Performance Solutions\*  
Certified QMS



**pinkbatts.co.nz**

**0800 746 522**

The colour PINK and Pink® are registered trademarks of Owens Corning used under license by Tasman Insulation New Zealand Ltd trading as Comfortech Building Performance Solutions®. Batts®, Superbatts®, SnugFloor® and Ultra® are registered trademarks of Comfortech®. This document supersedes all previous versions and may have been superseded; is a guide only and the purchaser should ascertain the suitability of this product for the end-use situation intended and when used in conjunction with other products; and is provided without prejudice to Comfortech® standard terms of sale. Comfortech® retains the right to change specifications without prior notice. Refer to [www.pinkbatts.co.nz](http://www.pinkbatts.co.nz) or consult Comfortech® for further information. Do not use this product for any application not detailed in this document. All claims about this product are subject to any variation caused by normal manufacturing process and tolerances. The liability of Comfortech® and its employees and agents for any errors or omissions in this document or otherwise in relation to the product is limited to the fullest extent permitted by law. Except where the consumer acquires the goods for the purposes of a business, any rights a consumer may have under the Consumer Guarantees Act are not affected.

9-15 Holloway Place, Penrose, Auckland

June 2023





**BRANZ Appraised**

Appraisal No. 632 [2023]

**PINK® BATTS®  
SNUGFLOOR®  
INSULATION**

**Appraisal No. 632 [2023]**

This Appraisal replaces BRANZ  
Appraisal No. 632 [2018]



**BRANZ Appraisals**

Technical Assessments of  
products for building and  
construction.



**Tasman Insulation NZ Ltd  
(T/A Comfortech Building  
Solutions)**

PO Box 12 069  
Penrose  
Auckland  
Tel: 09 579 2139  
Fax: 09 571 3482  
Freephone: 0800 746 522  
Web: www.pinkbatts.co.nz



**BRANZ**

1222 Moonshine Rd,  
RD1, Porirua 5381  
Private Bag 50 908  
Porirua 5240,  
New Zealand  
Tel: 04 237 1170  
branz.co.nz



**Product**

1.1 Pink® Batts® SnugFloor® Insulation is a resin-bonded, fibrous glass wool thermal insulating material for use in timber-framed floors. It is available in two widths to fit floor joist spacings.

**Scope**

2.1 Pink® Batts® SnugFloor® Insulation has been appraised for use as a thermal insulating material for timber-framed floors in new or existing domestic and commercial buildings.

**Building Regulations**

**New Zealand Building Code (NZBC)**

3.1 In the opinion of BRANZ, Pink® Batts® SnugFloor® Insulation, if designed, used, installed and maintained in accordance with the statements and conditions of this Appraisal, will meet or contribute to meeting the following provisions of the NZBC:

**Clause B2 DURABILITY:** Performance B2.3.1 [b] 15 years and B2.3.1 [c] 5 years. Pink® Batts® SnugFloor® Insulation meets these requirements. See Paragraphs 8.1 and 8.2.

**Clause F2 HAZARDOUS BUILDING MATERIALS:** Performance F2.3.1. Pink® Batts® SnugFloor® Insulation meets this requirement.

**Clause H1 ENERGY EFFICIENCY:** Performance H1.3.1 [a] and H1.3.2 E. Pink® Batts® SnugFloor® Insulation contributes to meeting these requirements. See Paragraphs 14.1 and 14.2.

WAIMAKARIRI DISTRICT COUNCIL  
Plans and specifications APPROVED in accordance  
with the Building Act 2004, clause 49 and the Building  
Regulations 1992, Clause 3  
BC240589 22/08/2024 Chrisk



## Technical Specification

- 4.1 Pink® Batts® SnugFloor® Insulation is a resin-bonded, fibrous glass wool insulation manufactured from recycled and/or virgin glass and cured urea extended phenolic resin. Pink® Batts® SnugFloor® Insulation is available as set out in Table 1.

**Table 1: Pink® Batts® SnugFloor® Insulation product table**

R-value	Nominal Thickness [mm]	Width [mm]	Length [mm]	Density [kg/m³]
2.6	110	480 or 580	1,220	13.3
3.2	140	480 or 580	1,220	9.6

All Pink® Batts® Insulation products covered by this Appraisal have the Environmental Choice licence.

- 4.2 Pink® Batts® SnugFloor® Insulation is pink in colour and is baled in pink polythene bags with labelling in compliance with AS/NZS 4859.1.
- 4.3 Accessories used with Pink® Batts® SnugFloor® Insulation, which are supplied by the insulation installer, are plastic strapping and stainless steel or plastic staples.

## Handling and Storage

- 5.1 Pink® Batts® SnugFloor® Insulation must be stored under cover and in dry conditions. Heavy objects must not be stacked on the bales. The bales must be stored in an orientation that avoids excessive compression of the product.
- 5.2 In general, insulation products are sensitive to the length of time they are stored in compression packaging. Product that does not recover to its nominal thickness may not achieve the stated thermal resistance [R-value].

## Technical Literature

- 6.1 This Appraisal must be read in conjunction with:
- Pink® Batts® Thermal Solutions: Product Guide, September 2023.
  - Pink® Batts® Snugfloor® Insulation: Product and Installation Guide, June 2023.
- 6.2 All aspects of design, use, installation and maintenance contained in the Technical Literature and within the scope of this Appraisal must be followed.

## Design Information

### General

- 7.1 Pink® Batts® SnugFloor® Insulation is intended for use as thermal insulation to meet the requirements of the NZBC. Pink® Batts® SnugFloor® Insulation can be used to meet the minimum schedule method R-values of the NZBC Verification Methods H1/VM1, H1/VM2, NZBC Acceptable Solutions H1/AS1 or H1/AS2. Greater construction R-values can be achieved where specific design is used. For construction R-values, refer to the BRANZ House Insulation Guide. Product R-values and dimensions are given in Table 1.
- 7.2 Pink® Batts® SnugFloor® Insulation R-values have been determined by testing to AS/NZS 4859.1, which is an acceptable method in NZBC Acceptable Solution H1/AS1.
- 7.3 Pink® Batts® SnugFloor® Insulation is designed to be friction-fitted in new and retrofit installations and must be supported with plastic strapping. The sections are supplied in two widths to suit floor joist spacing.
- 7.4 Pink® Batts® SnugFloor® Insulation is suitable for use under floors which have an “enclosed perimeter foundation” as defined by NZS 4246. Where the subfloor area is not enclosed and subject to wind, such as in pole houses and raised floors, the insulation shall be protected by a suitable lining material.



**BRANZ Appraised**  
Appraisal No. 632 [2023]

**BRANZ Appraisal**  
Appraisal No. 632 [2023]  
30 October 2023

PINK® BATTS® SNUGFLOOR®  
INSULATION

- 7.5 Pink® Batts® SnugFloor® Insulation may also be suitable for use under floors where the perimeter foundation is enclosed by vertical or horizontal slats. Refer to Tasman Insulation New Zealand Ltd [t/a Comfortech Building Solutions] for site specific information.
- 7.6 The building envelope must be constructed to ensure that the insulation remains dry during installation and throughout the life of the building.
- 7.7 The clearance requirements for downlights must be met and reference made to the manufacturer's instructions and NZS 4246.

### Durability

- 8.1 The durability assessment of Pink® Batts® SnugFloor® Insulation to meet the requirements of the NZBC is based on the difficulty of access and replacement, and the ability to detect failure of the insulation, both during normal use and maintenance of the building,

### Serviceable Life

- 8.2 Where the building is maintained so that the provisions of NZBC Clauses E2 and E3 are met, and the where the insulation is not crushed or exposed to conditions that will diminish its thermal performance [e.g. moisture], Pink® Batts® SnugFloor® Insulation is expected to have a serviceable life of at least 50 years. Support accessories must also be selected according to the required serviceable life.

### Maintenance

- 9.1 Insulation that has become damp must be removed and the cause of dampness repaired. Flooring and framing must be clean and dry before fitting new insulation with an equivalent thermal rating. NZS 4246 gives guidance on thermal insulation maintenance due to water damage.

### Prevention of Fire Occurring

- 10.1 Pink® Batts® SnugFloor® Insulation is classified a non-combustible material and need not be separated from heat sources such as fireplaces, flues and chimneys. However, when used in conjunction with, or attached to heat sensitive materials, the heat sensitive material must be separated or protected from heat sources. Part 7 of NZBC Verification Method C/VM1 and Acceptable Solution C/AS1, and NZBC Acceptable Solution C/AS2 provide methods for separation and protection of combustible materials from heat sources.

### Downlights

- 10.2 Recessed luminaires shall be one of the specified luminaire types and installed in accordance with NZBC Acceptable Solution C/VM1 and NZBC Acceptable Solution C/AS1, Section 7.4.
- 10.3 Insulation materials must maintain a clearance of 100 mm to undefined recessed luminaires in existing buildings.

### Fire Affecting Areas Beyond the Fire Source

#### Control of Internal Fire and Smoke Spread

- 11.1 Pink® Batts® SnugFloor® Insulation products are classified non-combustible when tested to AS 1530.1 and can be assigned a Group Number of 1-S. When used in an occupied space, Pink® Batts® Insulation is not required to be enclosed by an internal lining. Refer to the relevant NZBC Acceptable Solution C/AS1 or C/AS2 for specific internal surface finish requirements.

### External Moisture

- 12.1 The total building envelope must be weathertight and comply with the requirements of NZBC Clause E2 to ensure that the insulation remains dry in use.
- 12.2 The moisture content of the construction materials at the time of installing and enclosing the insulation must meet the requirements of NZBC Acceptable Solution E2/AS1, Paragraph 10.2 a), or a lower moisture content if required by the flooring manufacturer.



### Internal Moisture

- 13.1 Buildings must provide an adequate combination of thermal resistance, ventilation and space temperature to all habitable spaces, bathrooms, laundries and other spaces where moisture may be generated or may accumulate. This does not apply to Communal Non-residential, Commercial, Industrial, Outbuildings or Ancillary buildings.

### Energy Efficiency

- 14.1 Pink® Batts® SnugFloor® Insulation will contribute to meeting the requirements of NZBC Clause H1 Performance H1.3.1 [a] and H1.3.2 E by compliance with NZBC Verification Methods H1/VM1, H1/VM2, NZBC Acceptable Solutions H1/AS1 or H1/AS2.
- 14.2 Pink® Batts® SnugFloor® Insulation R-values have been determined by testing to AS/NZS 4859.1 and are given in Table 1.

## Installation Information

### Installation Skill Level Requirement

- 15.1 All design and building work must be carried out in accordance with Pink® Batts® SnugFloor® Insulation Technical Literature and this Appraisal. All building work must be undertaken by competent and experienced tradespersons conversant with Pink® Batts® SnugFloor® Insulation.

### General

- 16.1 Installation of Pink® Batts® SnugFloor® Insulation must be in accordance with the Technical Literature and this Appraisal. NZS 4246 should be used as a guide for installing insulation in residential buildings.
- 16.2 Pink® Batts® SnugFloor® Insulation must be installed only when the building is enclosed and when the construction materials have achieved the required maximum moisture content or less.
- 16.3 Pink® Batts® SnugFloor® Insulation must be released from the packaging and allowed to re-loft prior to installation. The time to loft will depend upon the length of time the product has been packaged and stored.
- 16.4 Pink® Batts® SnugFloor® Insulation is installed by friction-fitting the insulation between floor joists, and then supporting it with plastic strapping. The installation is critical so that the potential for gaps and convective heat loss is reduced. Pink® Batts® SnugFloor® Insulation Technical Literature must be referred to for installation details.
- 16.5 A minimum 100 mm gap must be maintained between Pink® Batts® SnugFloor® Insulation and all plumbing pipes. This gap will also ensure that there is adequate access for servicing.
- 16.6 The clearance requirements for heating appliances, light fittings and downlights must be followed. Refer also to NZS 4246.

### Inspections

- 16.7 The Technical Literature, this Appraisal and NZS 4246 must be referred to during the inspection of Pink® Batts® SnugFloor® Insulation installations.

### Health and Safety

- 17.1 Refer to the Technical Literature and NZS 4246 for guidance on health and safety requirements such as personal protective clothing and installation hazard assessment.



**BRANZ Appraised**  
Appraisal No. 632 [2023]

**BRANZ Appraisal**  
Appraisal No. 632 [2023]  
30 October 2023

PINK® BATTES® SNUGFLOOR®  
INSULATION

## Basis of Appraisal

The following is a summary of the technical investigations carried out:

### Tests

- 18.1 Thermal resistance testing of Pink® Batts® SnugFloor® Insulation in accordance with AS/NZS 4859.1 has been completed. The results have been reviewed by BRANZ technical experts.
- 18.2 Tests have been carried out in accordance with AS 1530.1. Pink® Batts® SnugFloor® Insulation is not deemed combustibile according to the test criteria. The results have been reviewed by BRANZ technical experts.

### Other Investigations

- 19.1 An assessment of the durability of Pink® Batts® SnugFloor® Insulation has been made by BRANZ technical experts.
- 19.2 The manufacturer's Technical Literature has been reviewed by BRANZ and found to be satisfactory.

### Quality

- 20.1 The manufacture of Pink® Batts® SnugFloor® Insulation has been examined by BRANZ, including methods adopted for quality control. Details of the manufacturing processes, and quality and composition of the raw materials used were obtained and found to be satisfactory.
- 20.2 Pink® Batts® SnugFloor® Insulation products have been assessed for their environmental impact by the New Zealand Ecolabelling Trust and comply with the requirements of the Environmental Choice Specification, Licence No. 2504017 - Thermal [resistive type] Building Insulants. The products that have the Environmental Choice license are noted in Table 1.
- 20.3 Tasman Insulation New Zealand Ltd [t/a Comfortech Building Solutions] is responsible for the quality of the product supplied.
- 20.4 Quality of installation of the product on-site is the responsibility of the installer.
- 20.5 Quality of maintenance of the building to ensure the insulation material remains dry is the responsibility of the building owner.

## Sources of Information

- AS 1530.1:1994 Combustibility test for materials.
- AS/NZS 4859.1:2018 Thermal insulation materials for buildings.
- BRANZ House Insulation Guide [Sixth Edition], 2022.
- NZS 4246:2016 Energy efficiency - Installing bulk thermal insulation in residential buildings.
- Ministry of Business, Innovation and Employment Record of amendments - Acceptable Solutions, Verification Methods and handbooks.
- The Building Regulations 1992.

BRANZ Appraised  
Appraisal No. 632 [2023]BRANZ Appraisal  
Appraisal No. 632 [2023]  
30 October 2023PINK® BATTS® SNUGFLOOR®  
INSULATION

In the opinion of BRANZ, **Pink® Batts® SnugFloor® Insulation** is fit for purpose and will comply with the Building Code to the extent specified in this Appraisal provided it is used, designed, installed and maintained as set out in this Appraisal.

The Appraisal is issued only to **Tasman Insulation New Zealand Ltd [t/a Comfortech Building Solutions]**, and is valid until further notice, subject to the Conditions of Appraisal.

### Conditions of Appraisal

1. This Appraisal:
  - a) relates only to the product as described herein;
  - b) must be read, considered and used in full together with the Technical Literature;
  - c) does not address any Legislation, Regulations, Codes or Standards, not specifically named herein;
  - d) is copyright of BRANZ.
2. **Tasman Insulation New Zealand Ltd [t/a Comfortech Building Solutions]**:
  - a) continues to have the product reviewed by BRANZ;
  - b) shall notify BRANZ of any changes in product specification or quality assurance measures prior to the product being marketed;
  - c) abides by the BRANZ Appraisals Services Terms and Conditions;
  - d) warrants that the product and the manufacturing process for the product are maintained at or above the standards, levels and quality assessed and found satisfactory by BRANZ pursuant to BRANZ's Appraisal of the product.
3. BRANZ makes no representation or warranty as to:
  - a) the nature of individual examples of, batches of, or individual installations of the product, including methods and workmanship;
  - b) the presence or absence of any patent or similar rights subsisting in the product or any other product;
  - c) any guarantee or warranty offered by **Tasman Insulation New Zealand Ltd [t/a Comfortech Building Solutions]**.
4. Any reference in this Appraisal to any other publication shall be read as a reference to the version of the publication specified in this Appraisal.
5. BRANZ provides no certification, guarantee, indemnity or warranty, to **Tasman Insulation New Zealand Ltd [t/a Comfortech Building Solutions]** or any third party.

For BRANZ

A handwritten signature in blue ink, appearing to read 'Claire Falck'.

**Claire Falck**  
Chief Executive  
Date of Issue:  
30 October 2023



INSTANT  
HORSEFEEDS  
fibre grow

© 2008-2009, All Rights Reserved. All other trademarks are the property of their respective owners.







