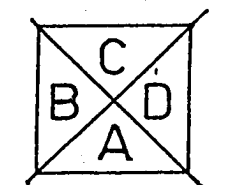


REVERSE PLAN.

Street Ashurst Ave
 St. No. 49
 D.P.S.: 50812
 Lot: 23
 B.P. No.: 89/886
 P. & DP. No.:
 RECORDS INDEX

AMENDED	
DATE	19 OCT 1989
STAT P.	
P. & D.	
BJ	
DESIGN	

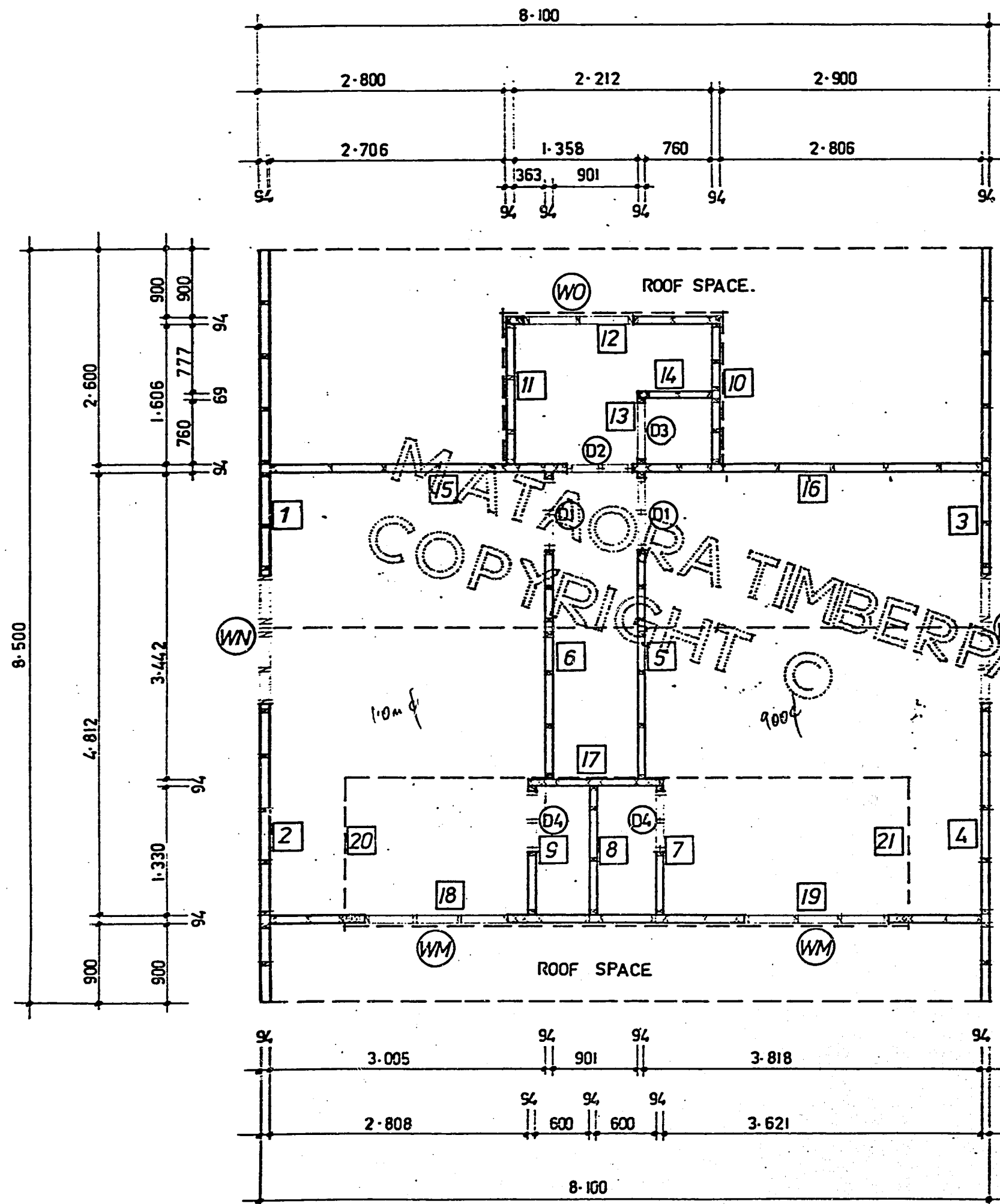
RECEIVED
 3 OCT 1989
 BLDG. DIV.



ATTIC DESIGN

DRAWN	J.L.M.	CHECKED		SCALES	1:50	
TRACED		DATE	5.8.87	SERIES OF	2	
					REF	A4.A.

97 m²
 45 m²
 142 m²



all angle cuts to wall plates & studs & jacks 45° & 15° are given to long point.

all components with angle cut will show measurement to L.P. (long point.)

for all general construction details see sheet 4.

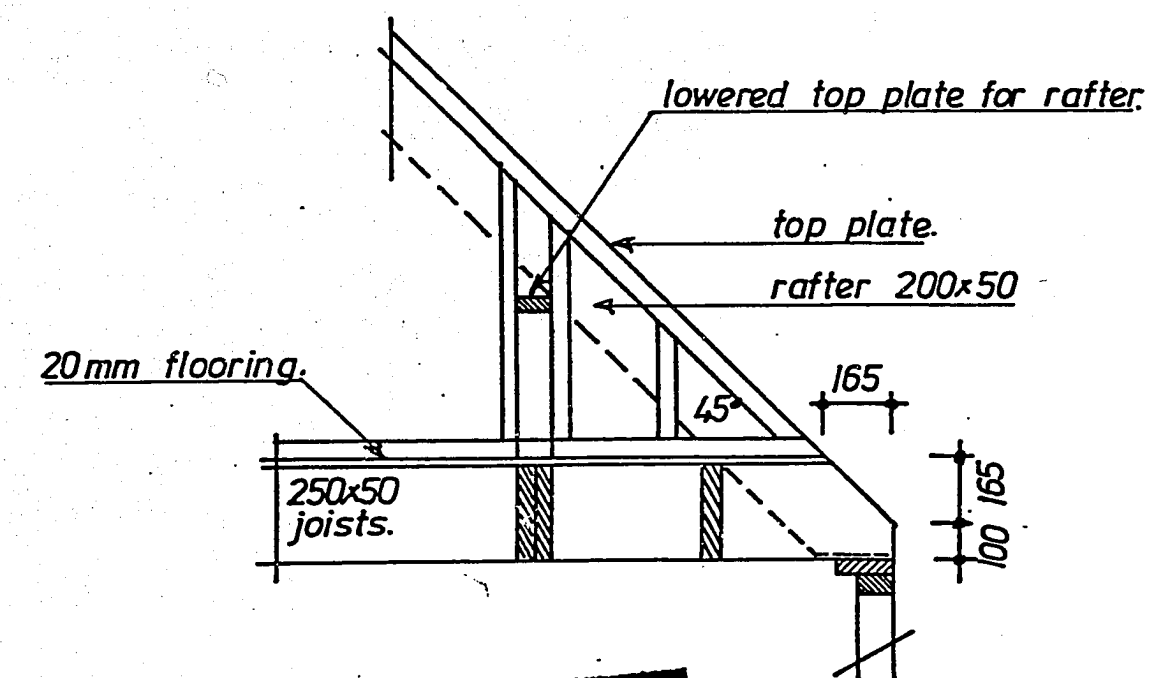
all components for wall frames (wall plates & studs) to be packed in individual packs for each wall.

window trim sizes.

WM	810 x 1-610	x 2
WN	1-210 x 1-410	x 2
WO	810 x 1-210	x 1

door trim sizes.

D1	2050 x 810	760	x 2	100x50
D2	2050 x 760	710	x 1	" "
D3	— x 666	—	x 1	" "
D4	2050 x 650	610	x 2	" "



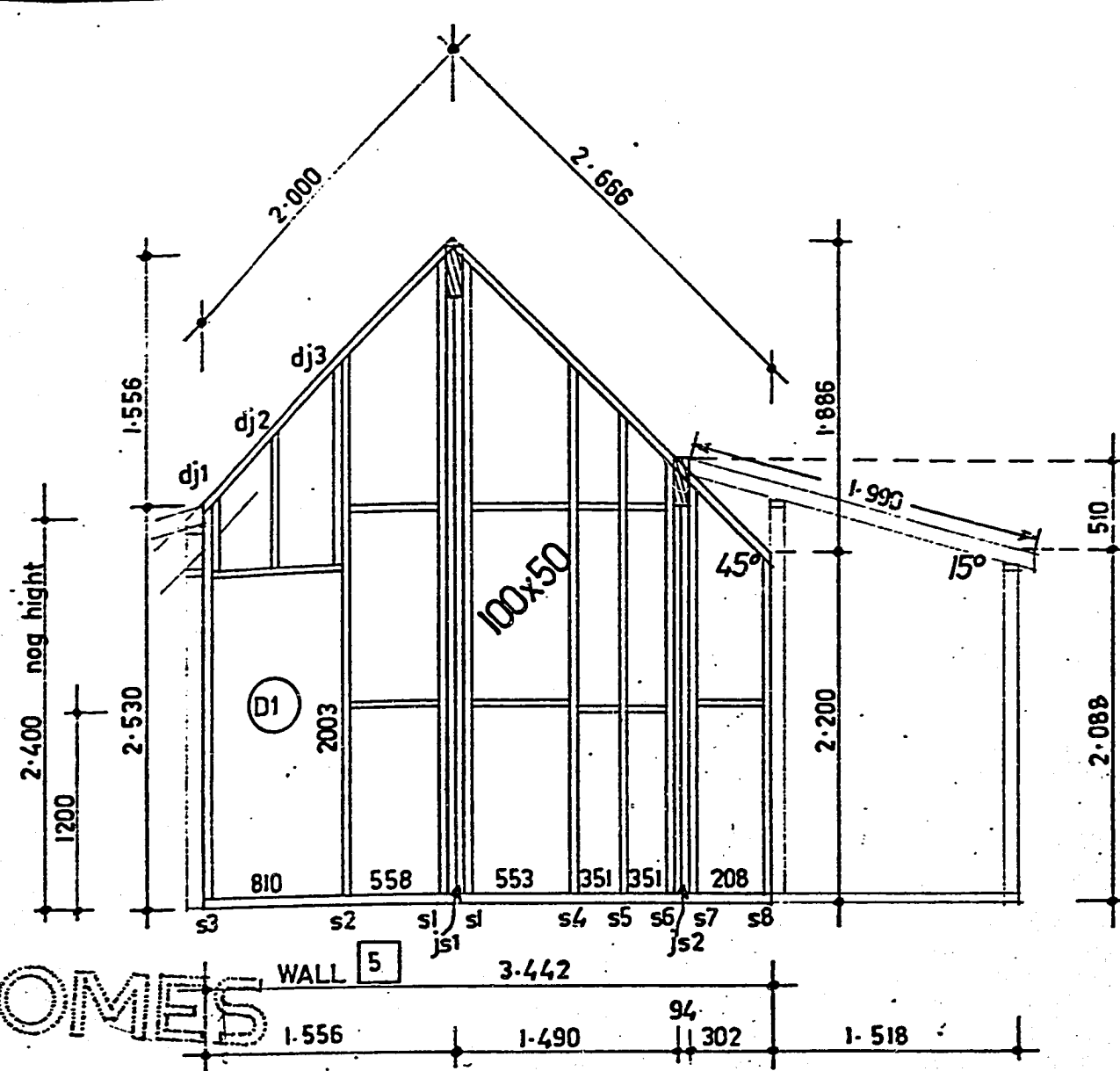
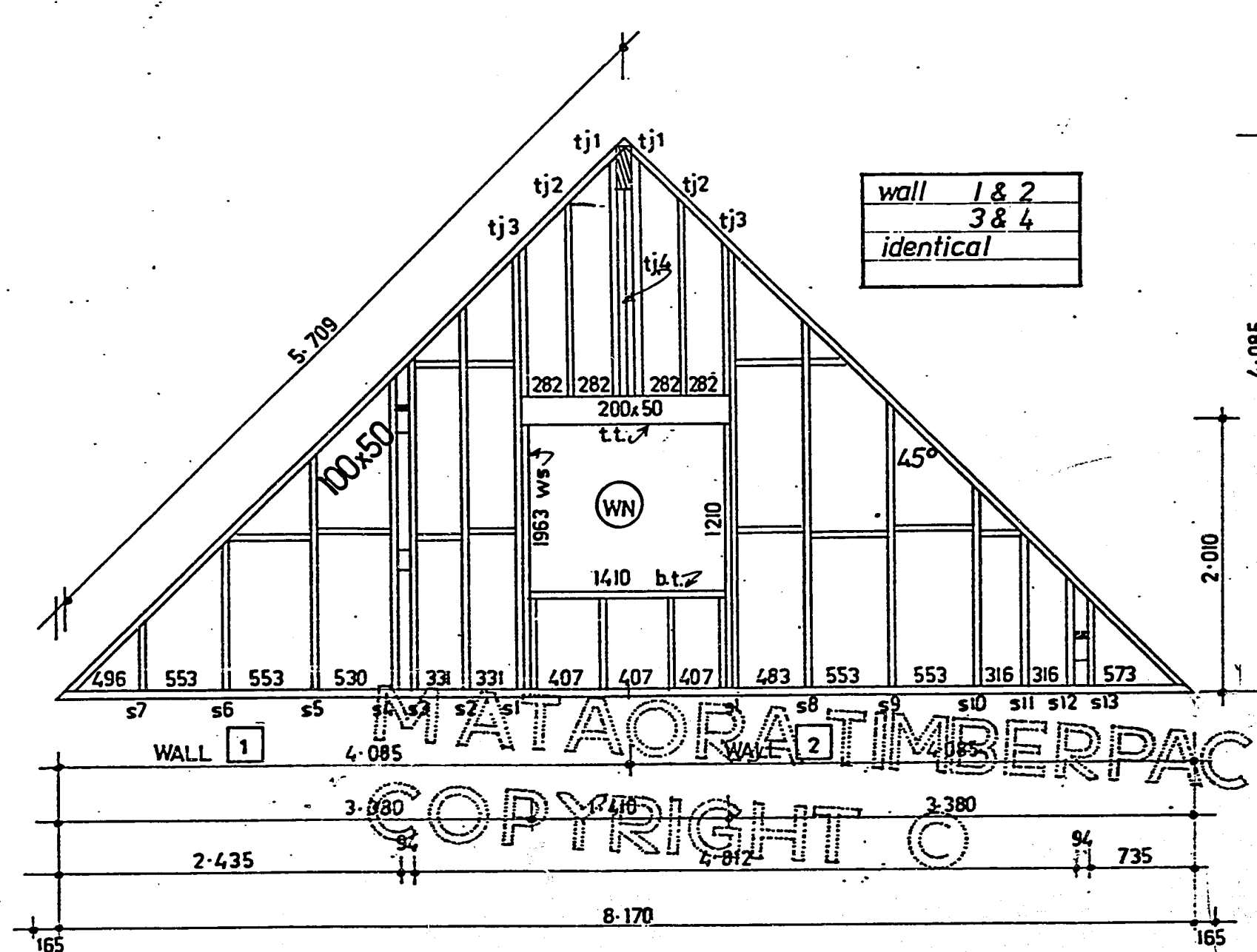
AMENDED PLANS	
DATE	19 OCT 1989
STAT P.	
P. & D.	
BI	
DESIGN	

Street Ashurst Ave
 St. No. 49
 D.P.S.: S.O.S.12
 Lot: 23
 B.P. No.: 89/886
 P. & DP. No.: _____
 MCC BUILDING RECORDS INDEX

RECEIVED 2
 3 OCT 1989
 BLDG. DIV.



ATTIC. A.4.A. upper floor. pre cut wall frame plan.		sht. 9.
DRAWN	CHECKED	SCALES 1:50
TRACED	DATE	SERIES OF REF



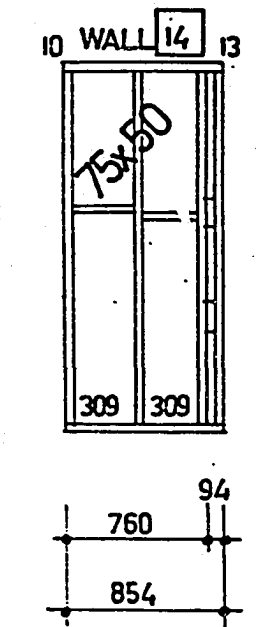
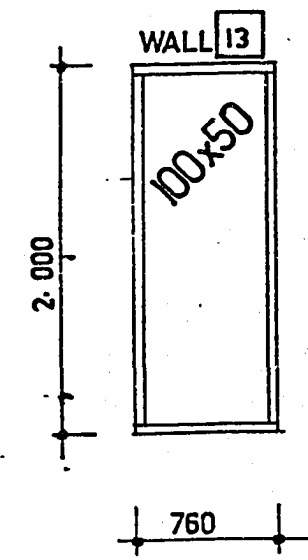
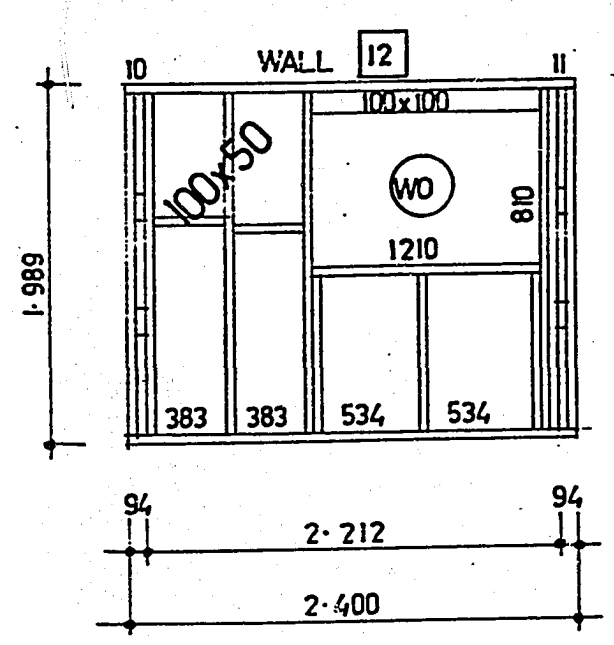
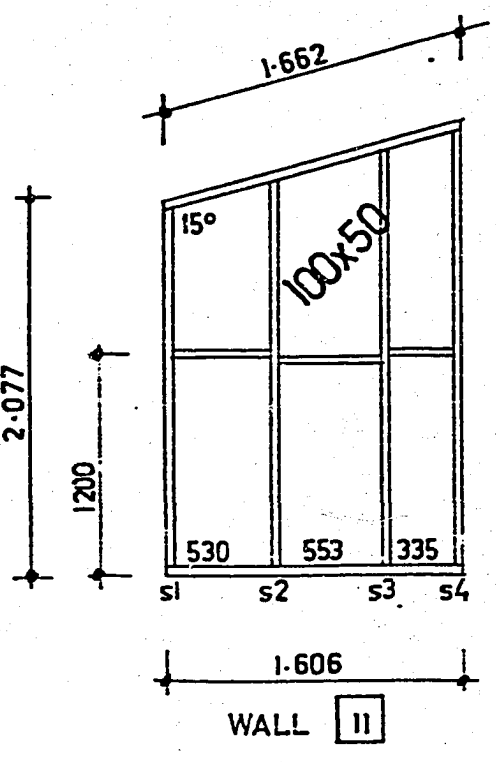
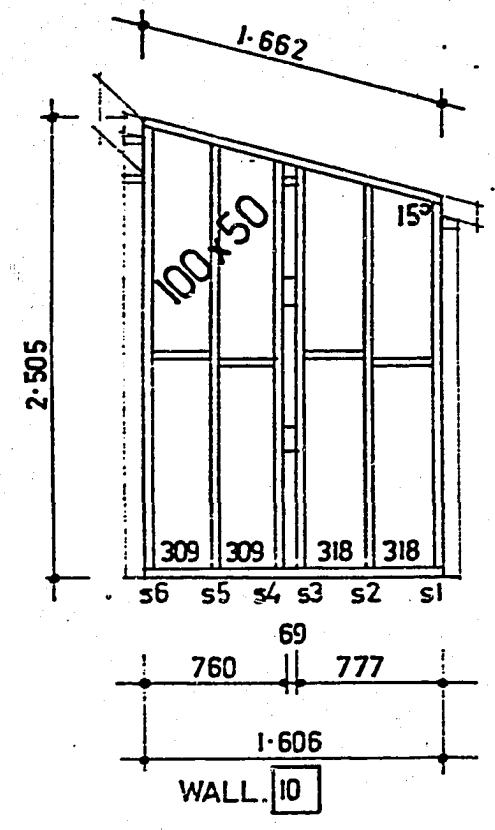
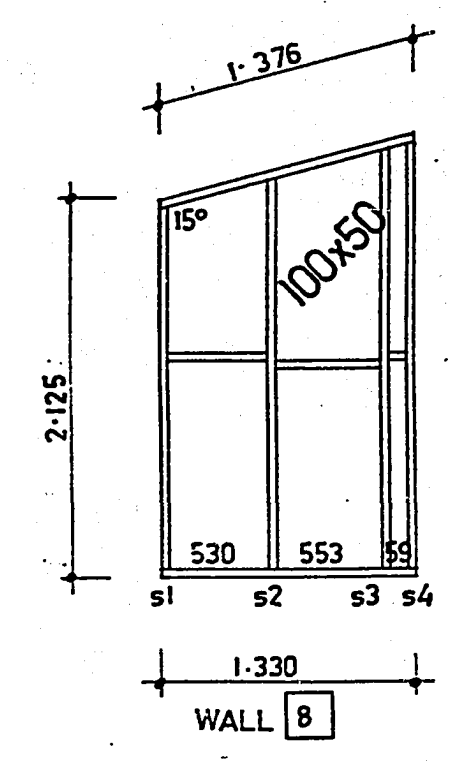
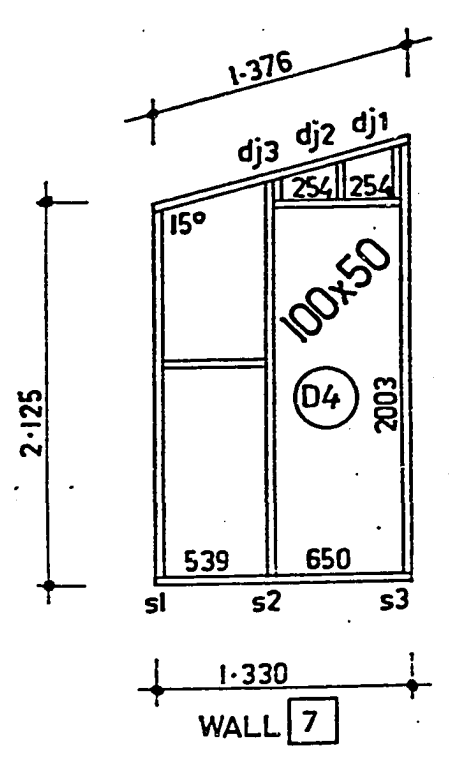
wall 5 & 6
identical.

12 mm birdsmouth in rafter
allowed for in overall height.

Street Ashurst Ave
 St. No. 49
 D.P.S.: 50812
 Lot: 23
 B.P. No.: 89/886
 P. & DP. No.: _____
 BUILDING RECORDS INDEX

RECEIVED
 3 OCT 1989
 BLDG. DIV.

MATAORA TIMBERPAC HOMES
 COPYRIGHT ©



wall 7 & 9
identical.

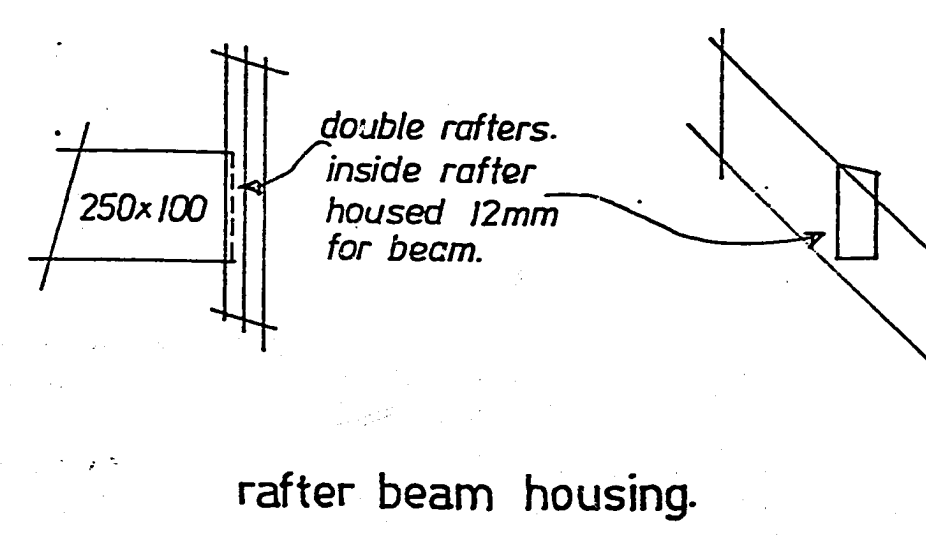
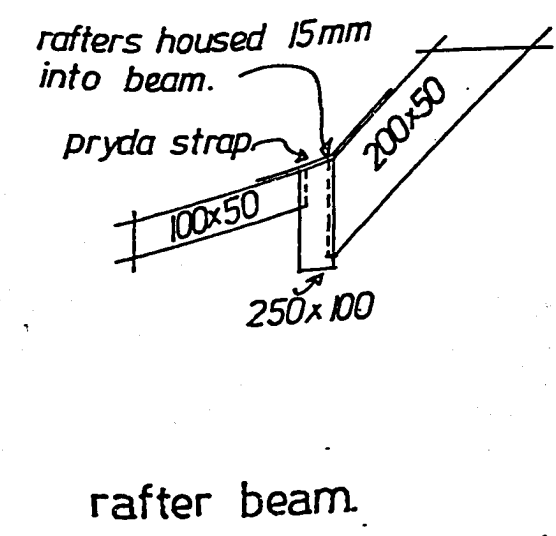
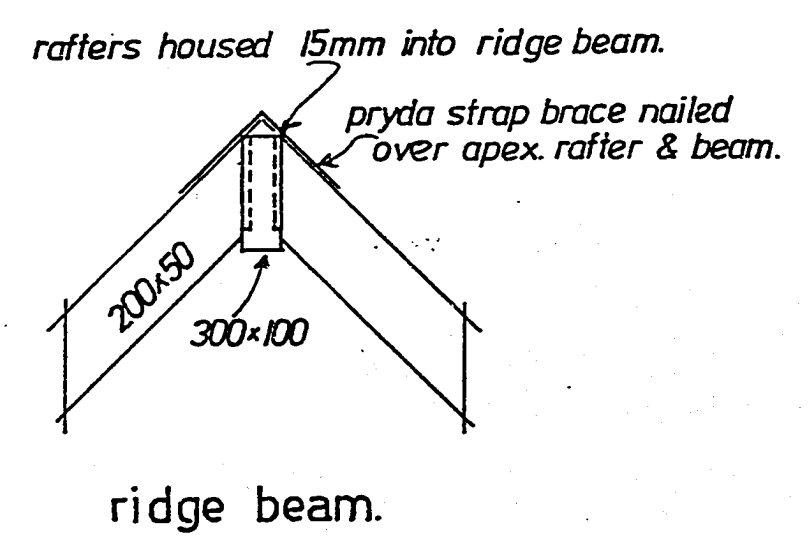
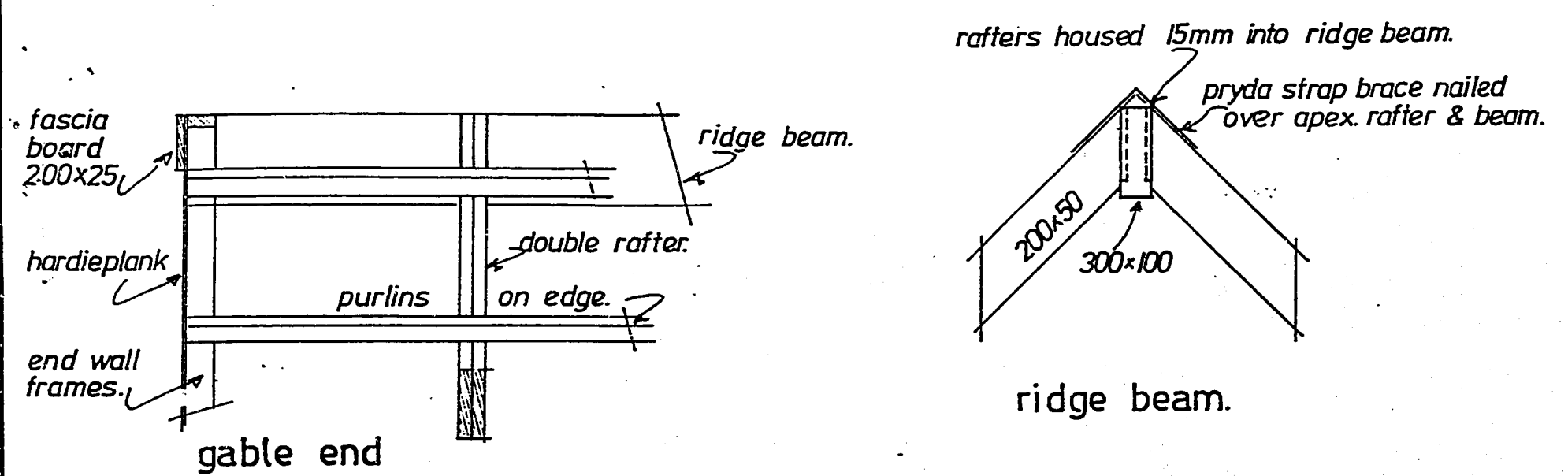
AMENDED PLANS	
DATE	19 OCT 1989
STAT P.	
P. & D.	
BI	
DESIGN	



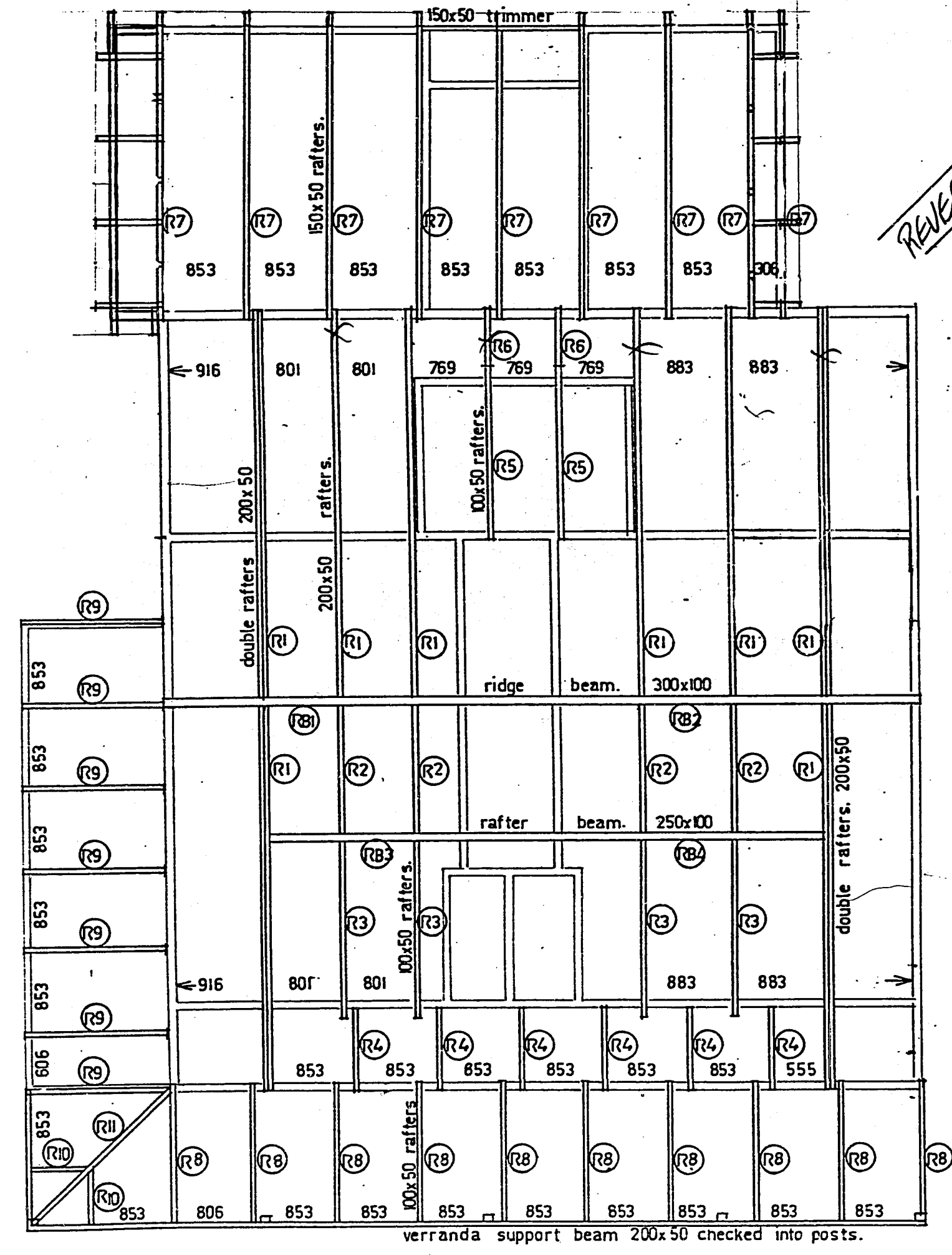
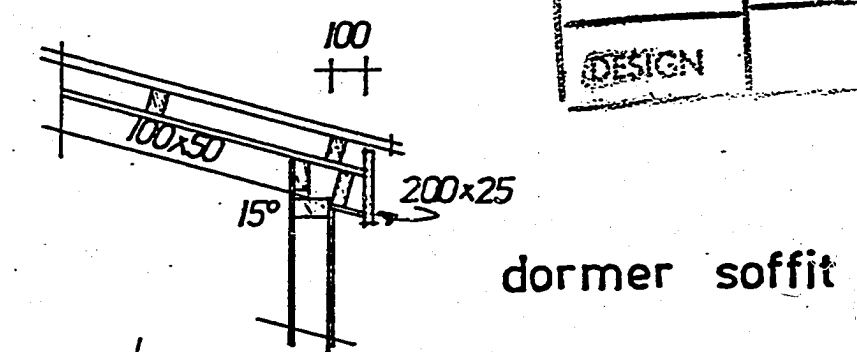
ATTIC. A4.A. upper floor.
pre cut wall frame set out.

DRAWN	CHECKED	SCALES	1:40
TRACED	DATE		

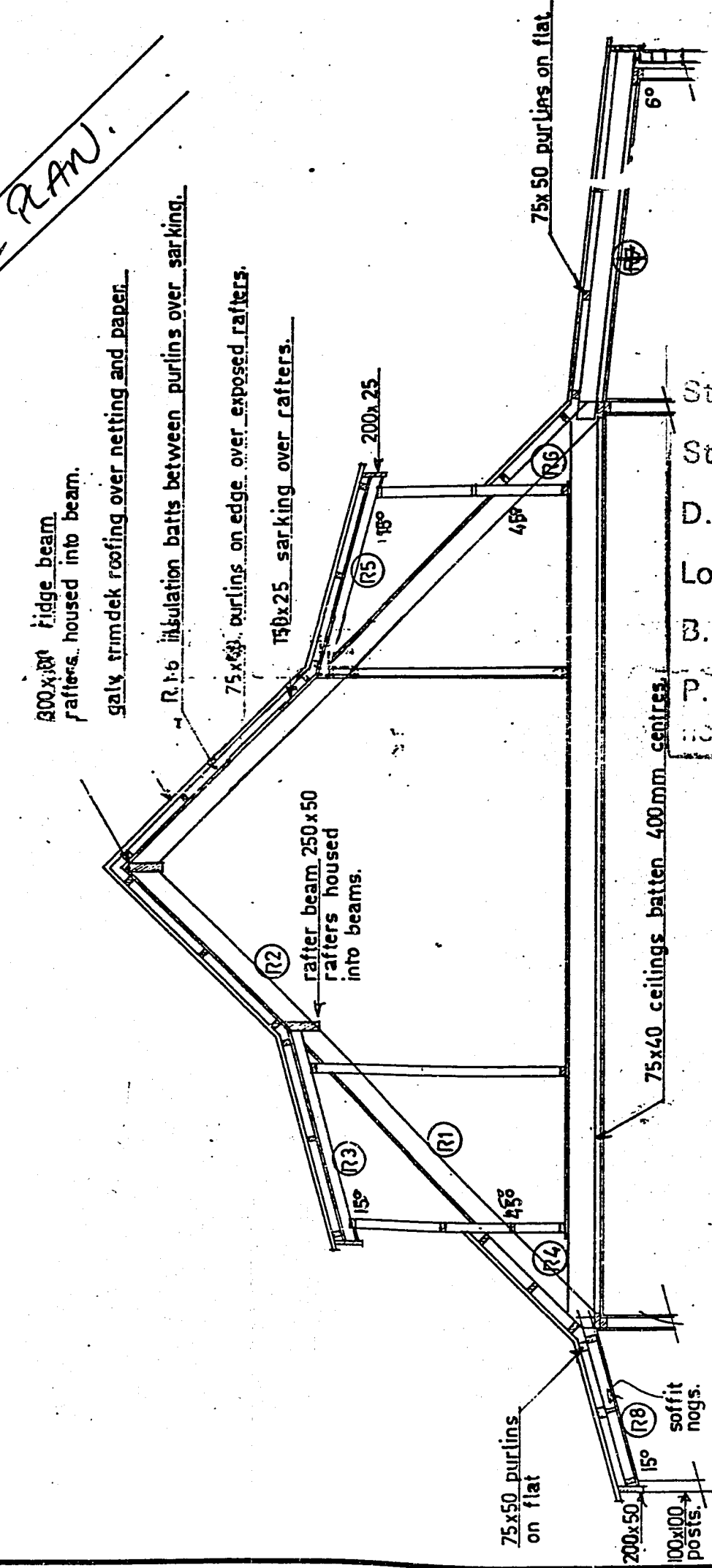
sht. 10
SERIES OF
REF



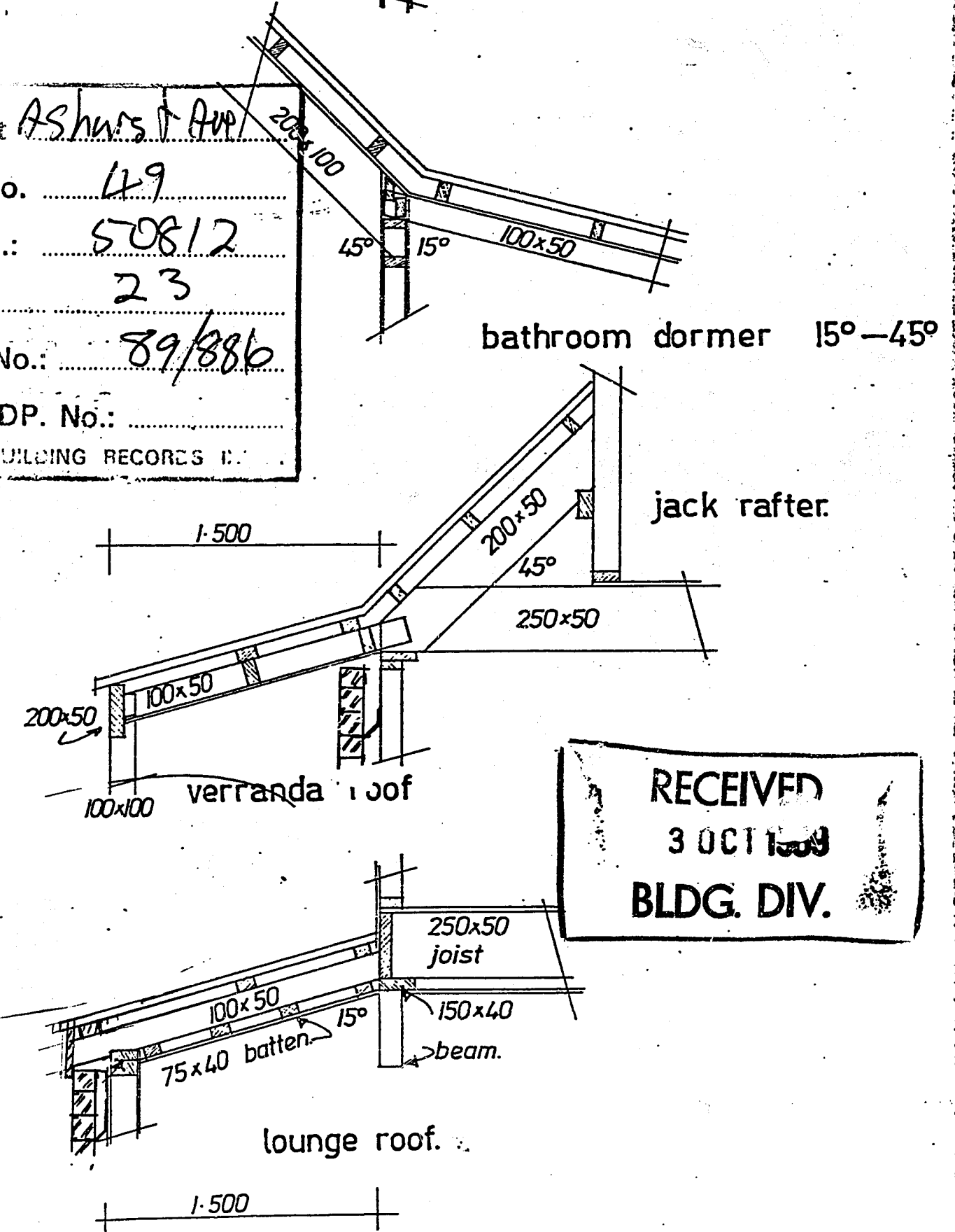
AMENDED PLANS	
DATE	19 OCT 1989
STAT P.	
P. & D.	
BI	
DESIGN	



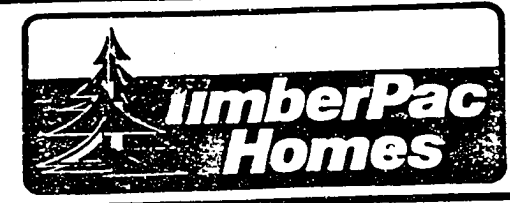
REVERSE PLAN.



Street Ashurst Ave
St. No. 49
D.P.S.: 50812
Lot: 23
B.P. No.: 89/886
P. & DP. No.:
100 BUILDING RECORDS I.

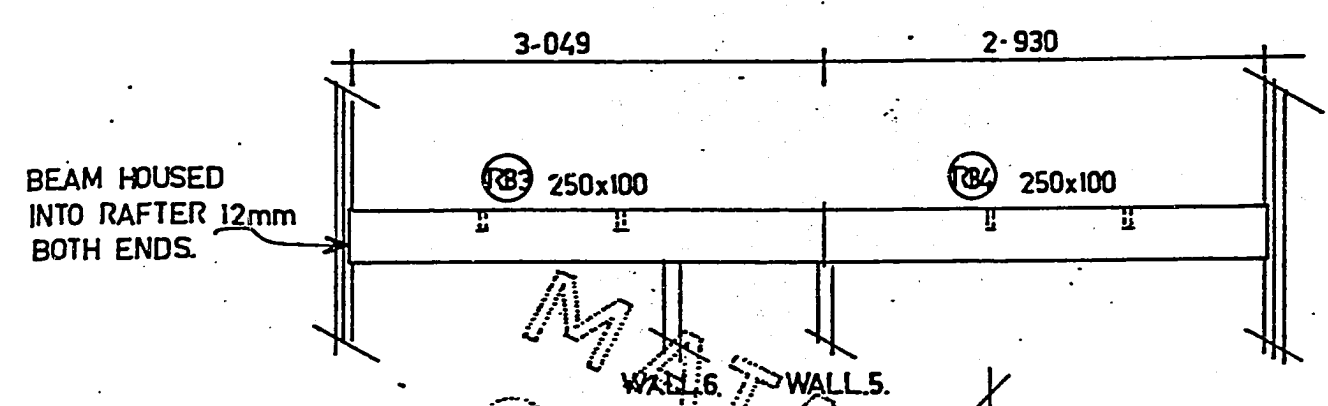
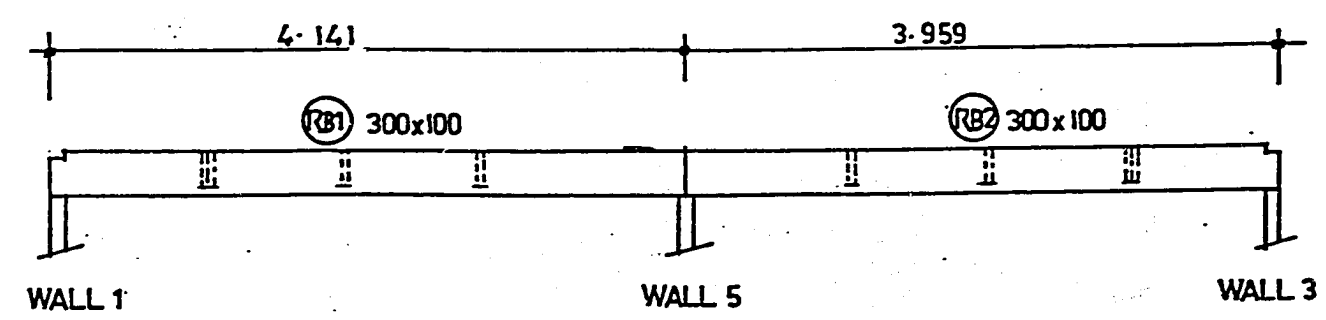


RECEIVED
3 OCT 1989
BLDG. DIV.



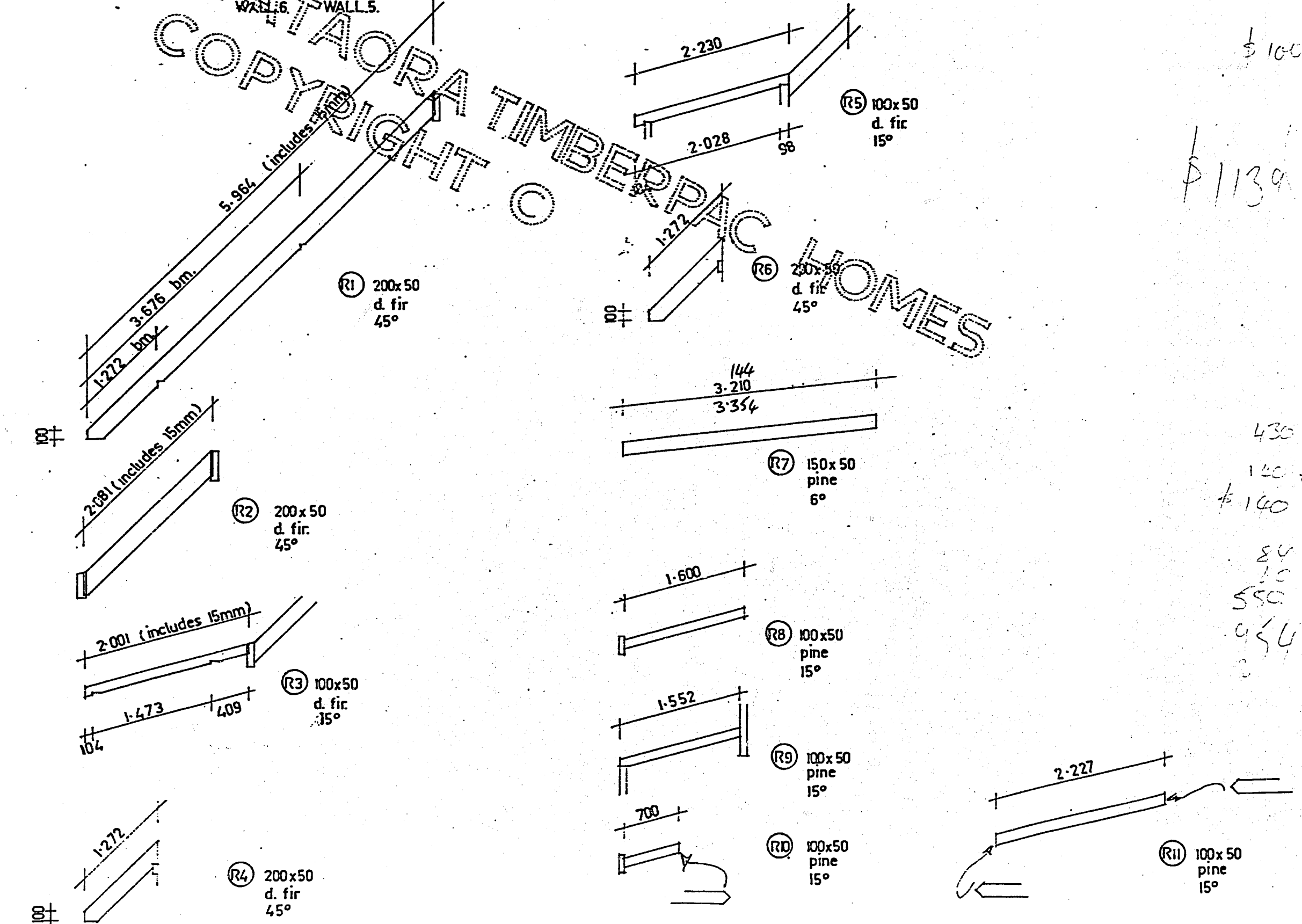
ATTIC A.4.A. rafter set out.			sht. 13.
DRAWN	CHECKED	SCALE	SERIES OF
TRACED	DATE		REF

NOTE. ALL RAFTERS BIRDSMOUTHED. 200x50 50mm. 100x50 12mm.



Street Ashurst Ave
 St. No. 49
 D.P.S.: 50812
 Lot: 23
 B.P. No.: 89/886
 P. & DP. No.:
 1980 BUILDING RECORDS INDEX

MATAORA
 COPYRIGHT
 TIMBERPAC
 HOMES



RIDGE BEAM			
(R1)	300x100 d.f. with rafter checkouts.	1/4-141	
(R2)	300x100 " " " "	1/3-959	175
RAFTER BEAM			
(R3)	250x100 d.f. with rafter checkouts.	1/3-049	
(R4)	250x100 " " " "	1/2-930	
RAFTERS			
(R1)	200x50 d.f.	1-272 B.M.	2/5-964 12 45° with b.m.
		1-272 B.M. & checkout	2/5-964 12 45° " "
		3-676 B.M.	8/5-964 45 45° " "
(R2)	200x50 d.f.	4/2-081	45°
(R3)	100x50 d.f.	3-92	4/2-001 15° with b.m.
(R4)	200x50 d.f.	6/1-272	45° with b.m.
(R5)	100x50 d.f.	2/2-230	15° with b.m.
(R6)	200x50 d.f.	2/1-272	45° with b.m.
(R7)	150x50 pine.	25-6	8/3-210 6°
			1/3-163 6°
(R8)	100x50 pine	10/1-600	15°
(R9)	100x50 pine	1/1-552	15°
(R10)	100x50 pine	2/1-700	15°
(R11)	100x50 pine	1/2-227	15°
RAFTER BEARER 100x50 R4 & R6		9-0m	
Z NAILS		54 RH. 54 LH.	
SOFFIT NOGS 100x50		20-0m + 25-0m. with 15° angle cut.	
CEILING WALL NOGS 100x50		15-0m with 45° " "	
" " " "		15-0m with 15° " "	
PURLINS 75x50		160-0m on edge	
" " " "		90-0m on flat	
PRYDA STRAP BRACE. 30m. with tensioner.		2 rolls.	
POSTS 100x100 tan H4 gd.		5/3600	
BOWMAC BRACKETS. 100x100		5	
VERRANDA BEAM. 200x50 tan H3 gd.		2/5-1 1/1-8	
BOLTS GALV COACH.		12/110x12mm. with washers.	
FASCIA BOARD. 200x25 huttloc.		13/6-000	

AMENDED PLANS

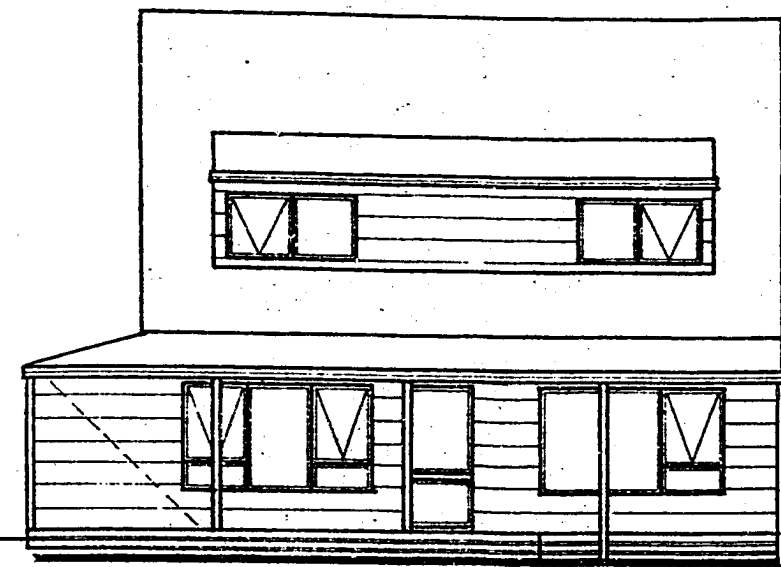
DATE	19 OCT 1989
STAT. P.	
P. & D.	
BI	
DESIGN	

RECEIVED
 3 OCT 1989
 BLDG. DIV.

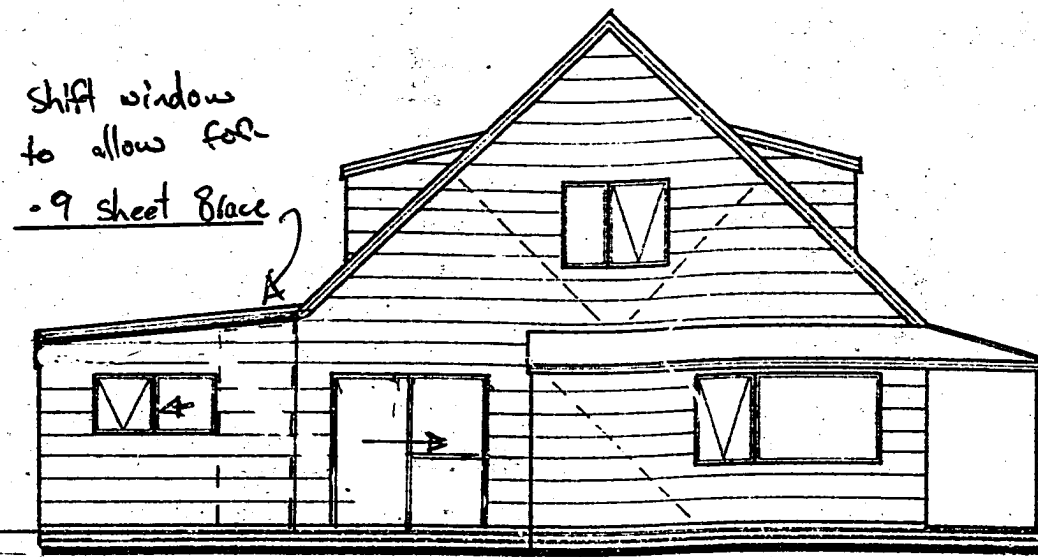


ATTIC. A.4.A.
 roof framing components. sht. 14

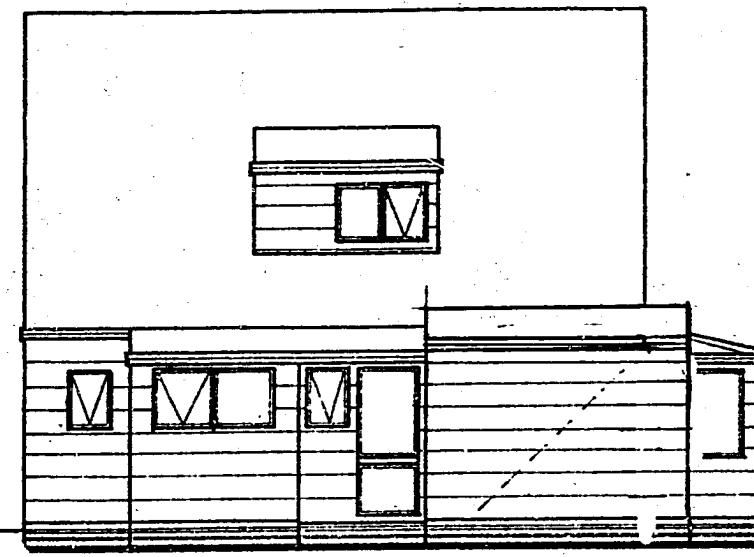
DRAWN	CHECKED	SCALE	SERIES OF
TRACED	DATE		REF



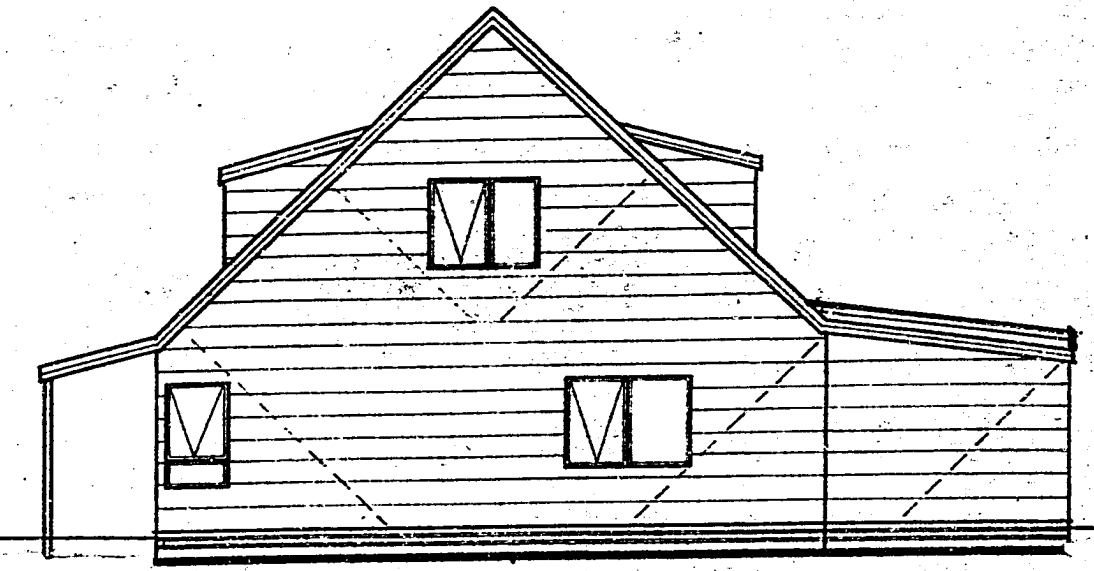
a



b



c



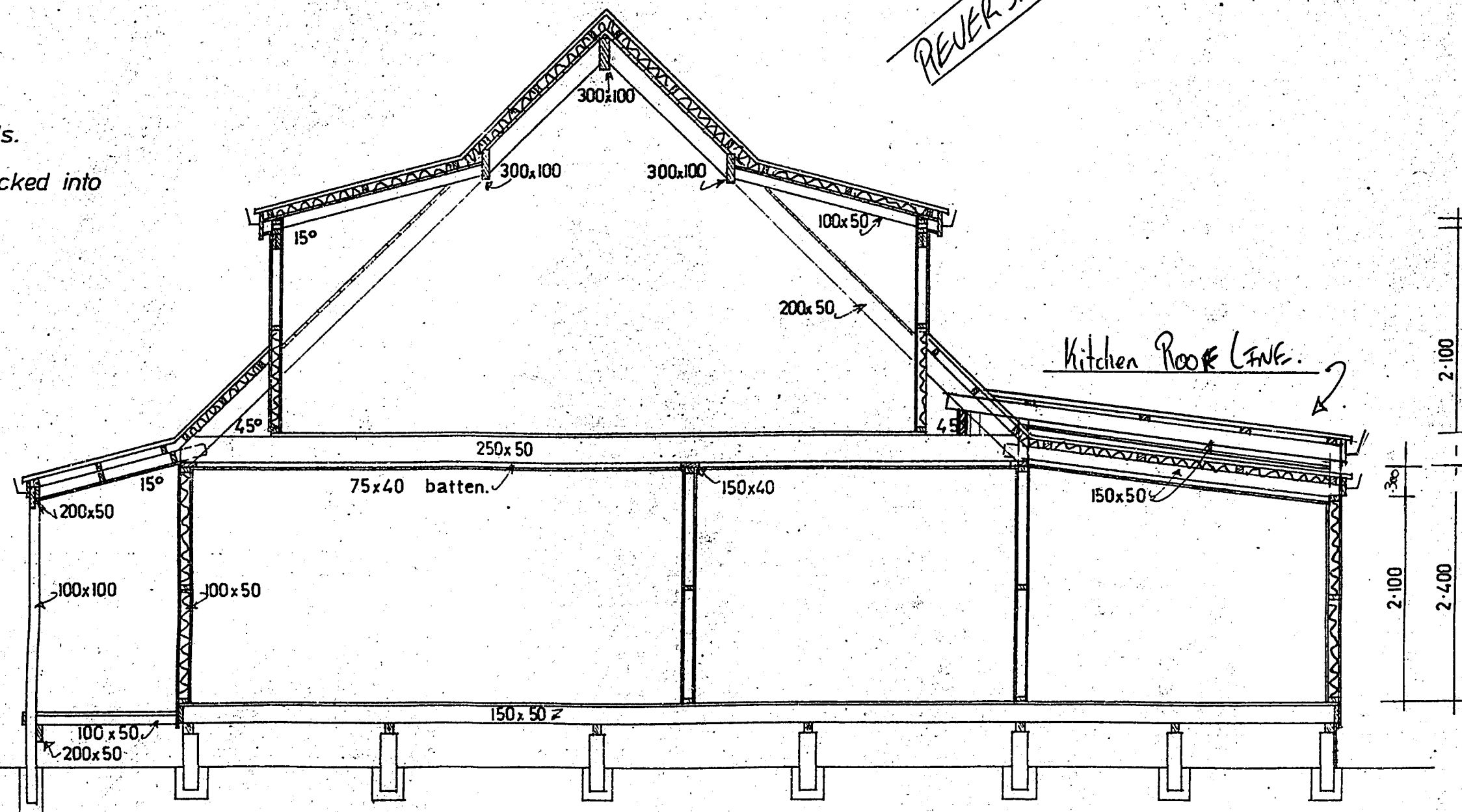
d

LOWER FLOOR AREA.

- senton tanalised piles H5 1.3 @ set in conc. pads.
- 100x100 bearers tan H3.
- 150x50 joists 600 @
- 150x50 ring joist perimeter.
- 100x25 base boards.
- 20mm pinefloor over perforated foil.
- 100x50 floor nogs.
- 100x50 loadbearing wall frames.
- 100x50 studs 600 @
- 100x50 nogs one row offset.
- 150x40 top plate ribbon board.
- 100x100 veranda posts tan H4 set in conc. pads.
- 100x50 veranda rafters 900 @
- 200x50 post beam - rafter support tan H3 checked into posts and bolted (12mm.)
- 100x50 soffit nogs.
- hardiflex soffit lining 4.75mm.
- 200x25 fascia board.

UPPER FLOOR AREA.

- 250x50 joists 600 @
- 250x50 solid blocking.
- 250x50 (double) joist beam over living - dining.
- 100x50 floor nogs.
- 20mm pinefloor.
- 100x50 wall studs 600 @
- 100x50 wall nogs 1200 @
- 200x50 main rafters 900 @ 45°
- 100x50 dormer rafters 900 @ 15°
- 150x50 lean to rafters 900 @
- 300 & 250x100 beams (rafters housed into.)
- 75x50 purlins on edge for insulation cavity.
- 200x25 fascia & barge boards.
- 100x25 soffits to dormers & gable ends.
- 150x25 t.g. & vee sarking over rafters for exposed ceilings.



BATTIS Ceilings R.I.S. GENERAL.

- Rockwool 50mm walls - trimdec roofing over paper & netting.
- FR 1.6 wall & ceiling batts.
- MARSDEN BRICKS OVER BUILDING PAPER - hardieplank 300mm ext. cladding over building paper.
- 40mm ceiling batten to lower floor ceiling 400 @
- gib. brd. ceilings to lower floor.
- timber sarking to upstairs ceiling.
- gib. brd. walls both floors.
- formica wallboard to showers.
- kauri interior flush doors.
- 20mm grooved door & window liners. paint quality.
- bronze aluminium exterior joinery.

FUTURE DECK FRAMING.

- 200x50 joist bearer bolted (12mm) to posts.
- 100x50 joist bearer fixed to wall.
- 100x50 joists 600 @
- 100x40 decking.
- 150x25 joist fascia.
- 250x50 step treads & sides.
- all deck framing tan H3.

Street Ashurst Ave.
 Ct. No. 49
 D.P.S.: 50812
 Lot: 23
 D.P. No.: 89/886
 P. & DP. No.:
 H.C.C. BUILDING RECORDS INDEX

AMENDED	
DATE	19 OCT 1989
STAT P.	
P. & D.	
SI	
DESIGN	

RECEIVED
 3 OCT 1989
 BLDG. DIV.

ATTIC DESIGN

DRAWN	1.2.M.	CHECKED		SCALES	1:50	SERIES OF	2
TRACED		DATE	10.8.87			REF	A4A

MICROBOX

MICROFILM RECORDS (WAIKATO) LTD. HAMILTON

3

2