

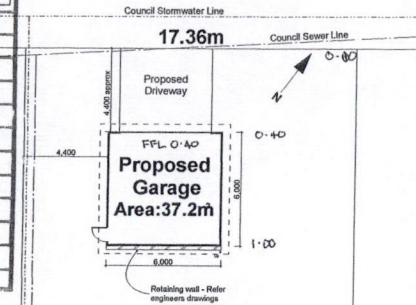


PGL  
© Design Copyright

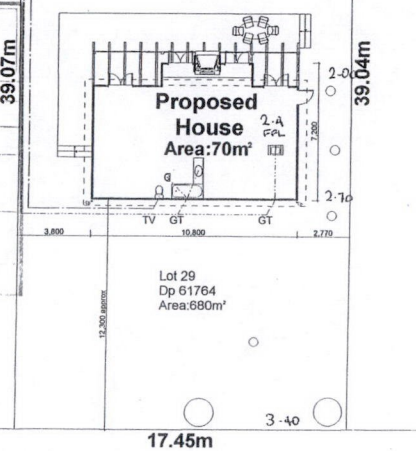
Parker Garages Ltd  
135 Meadowbank Road  
Meadowbank  
Auckland 1005  
Ph/fax 09-521 2137

# Taumatawiwi St

Far North District Council NOTIFIABLE INSPECTION	
Site inspection	
Footing / Foundation	
Slab	
Bond Beam	
Sub-floor	
Framing	
Exposed Rafter Strapping	
Pre-cast	
Shear Bracing	
Other aspects	1) FLASHING
Final inspection	



Far North District Council NOTIFIABLE INSPECTIONS Plumbing & Drainage	
Preparation under slab P & D	
Pre-laid Plumbing in walls	
Storm & Stormwater drainage	
Back-filling trench	
Bank support disposal	
and	
the	

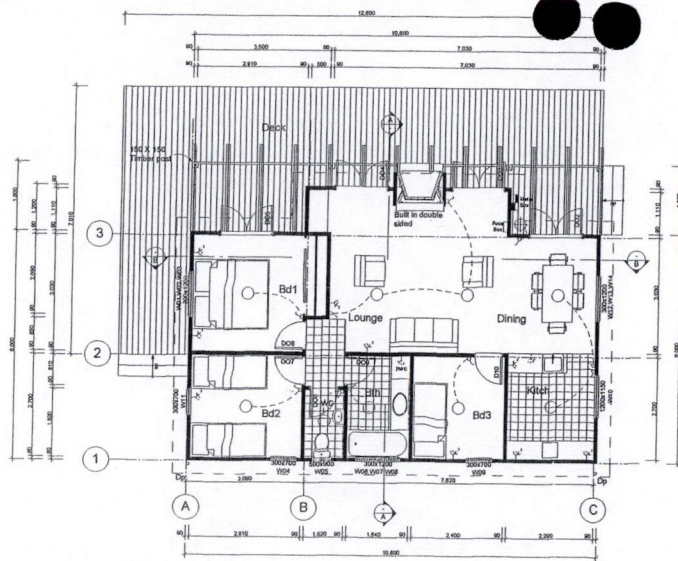


**DRAWING INDEX**

Site Plan	01
Floor Plan	01
Elevations	01
Garage Plan	1A
Garage Elevations	1A
Excavation	1A
Retaining Wall Detail	1A

**Typical Details**

Foundation Plan	02
Sub Flooring	03
Roof Framing	04
Roof Plan	04
Cross Sections	05
Portal Frames	06
Structural Details	07
Structural Details	08
Window & Door Details	09
Bathroom Elevation	10
Bathroom Detail	10
Kitchen Layout	11
Kitchen Elevation	11
Garage Foundation	12
Garage Roof	12
Garage Cross Sections	12
Garage Detail	13

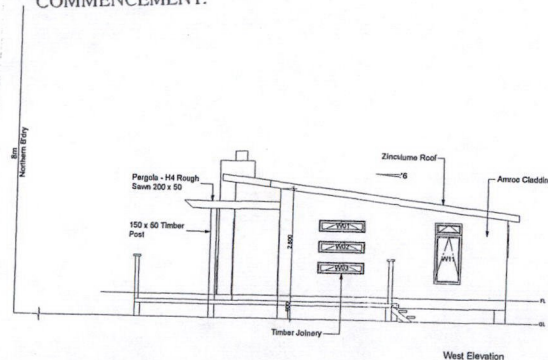
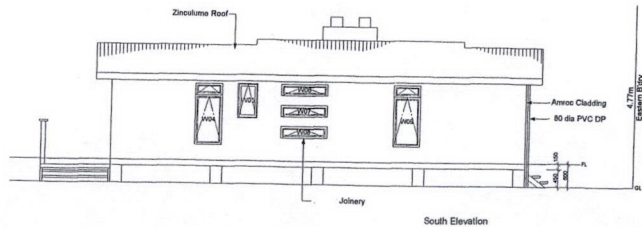
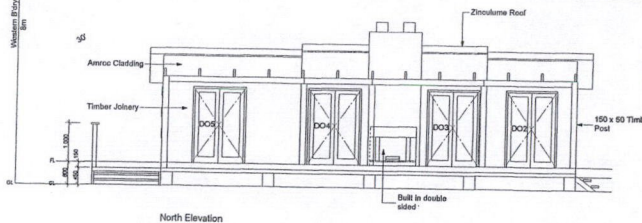


APPROVED PIMS 2006-1192  
Date..... 3 March 06  
Signed..... [Signature] (12)  
FAR NORTH DISTRICT COUNCIL

THESE PLANS AND SPECIFICATIONS MUST BE KEPT 'ON SITE' DURING CONSTRUCTION. ALL BOUNDARY PEGS MUST BE LOCATED AND FLAGGED BEFORE WORK IS COMMENCED.

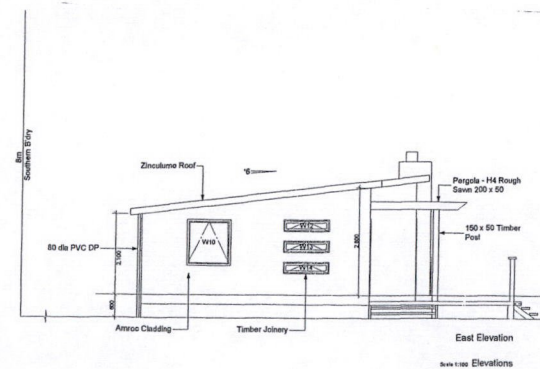
INSPECTION REQUIRED OF ALL WATER SUPPLY & SOIL/WASTE DISPOSAL PIPES, PRIOR TO COVERAGE WITH CONCRETE.

BUILDER TO CHECK LOCATIONS, LEVELS, DEPTHS ETC. OF ALL INGROUND SERVICES PRIOR TO COMMENCEMENT.

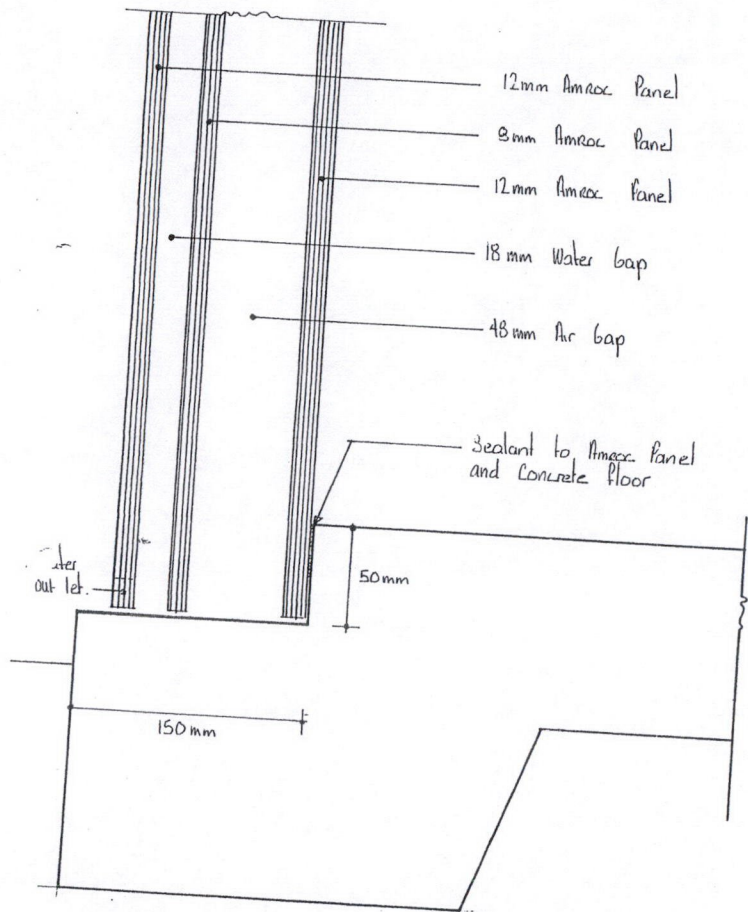


Site Plan Scale 1:200

## Parker Garages - 3 Bedroom House ©



CONCRETE FLOOR DETAIL



AMROC NZ LTD copyright

C1

Far North District  
Council  
Received



PGL  
© Design Copy

Parker Garages I  
135 Meadowbank  
Meadowbank  
Auckland 1005  
Ph/fax 09-521 21



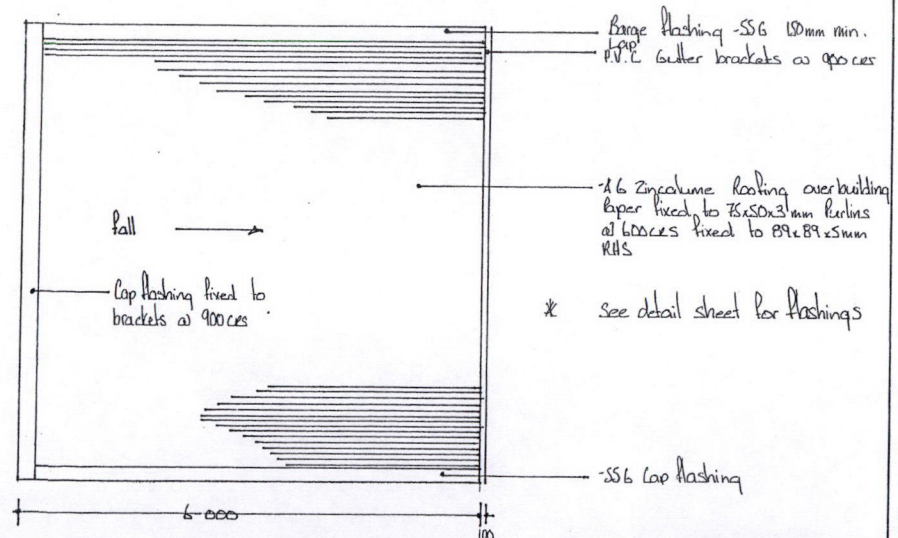
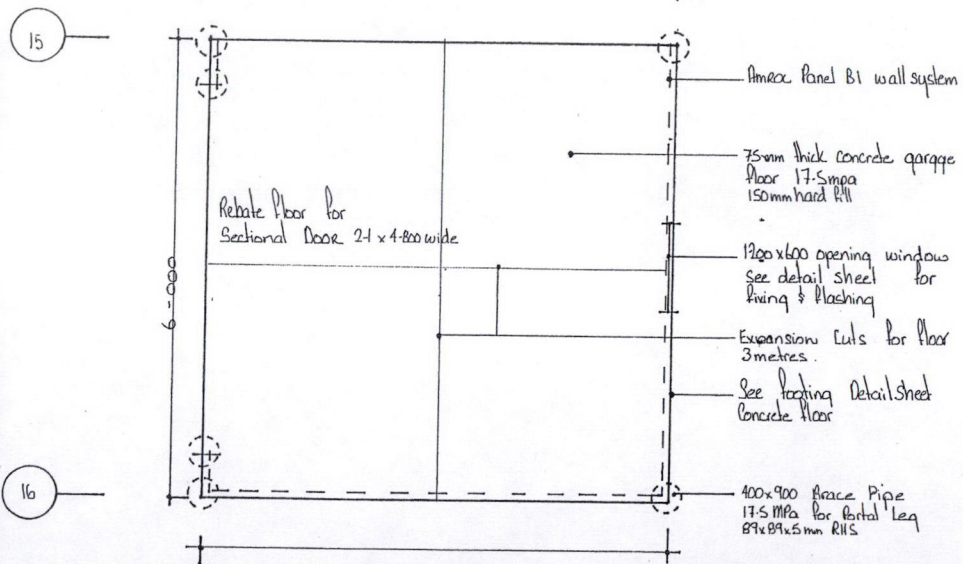
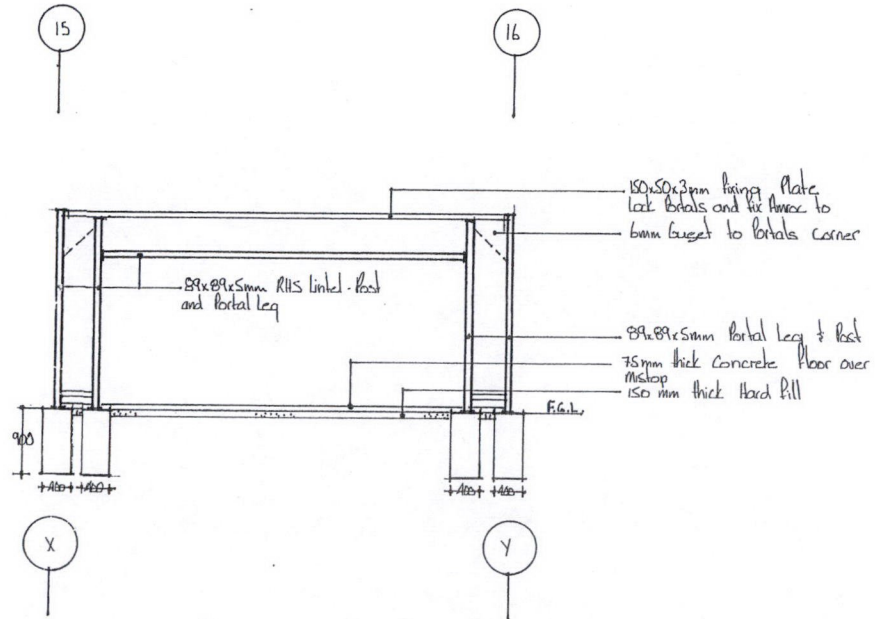
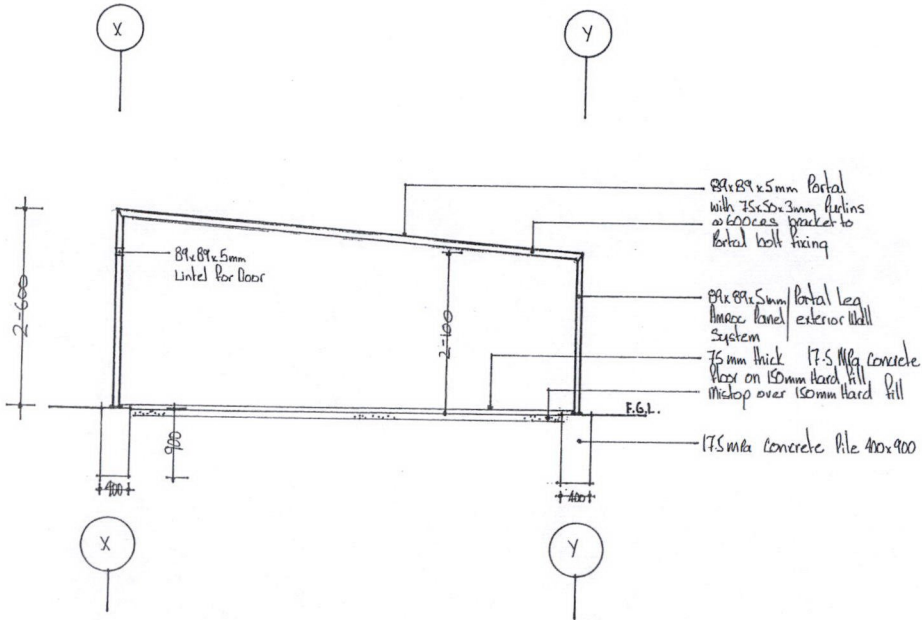
concrete footing detail



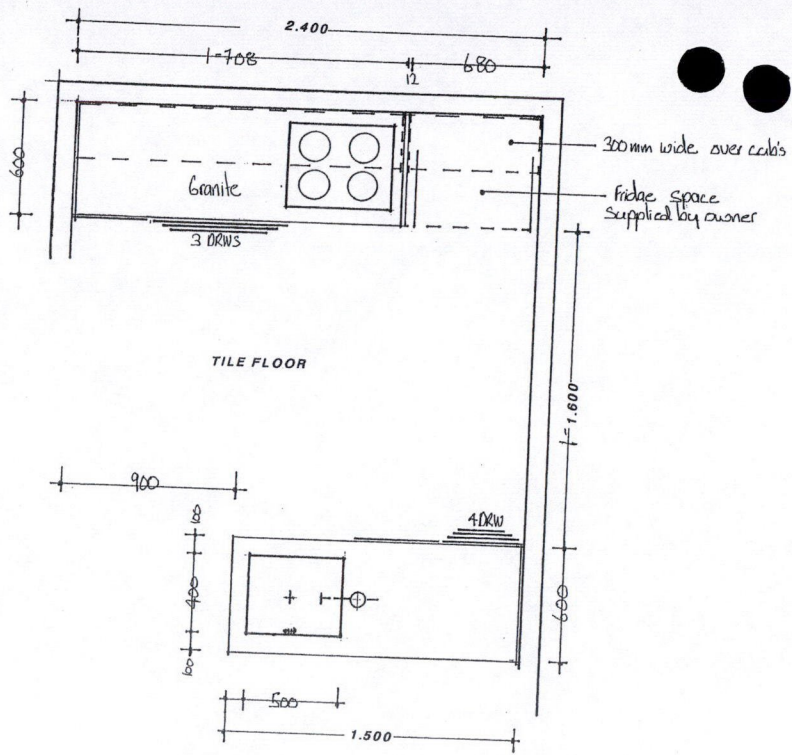
PGL  
© Design Copyright

Parker Garages Ltd  
135 Meadowbank Road  
Meadowbank  
Auckland 1005  
Ph/fax 09-521 2137

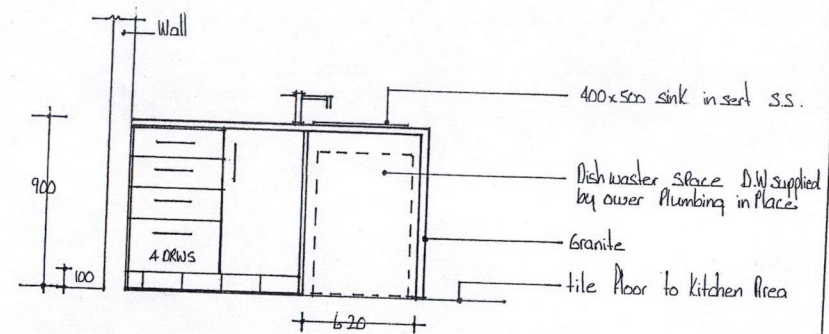
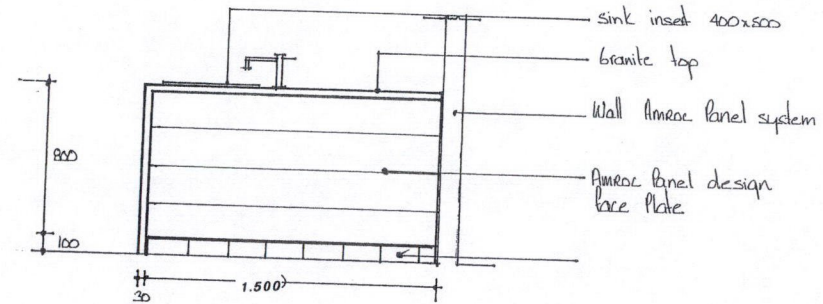
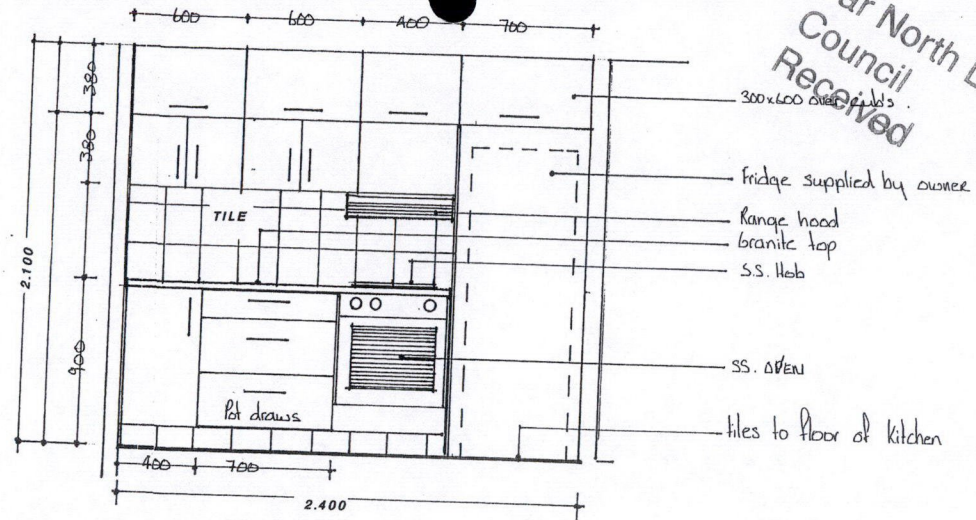
Far North District  
Council  
Received



*Handwritten signature*  
HGCL 19/12/05



KITCHEN PLAN 1.20



Far North District Council  
Received



PGL  
© Design Copyright

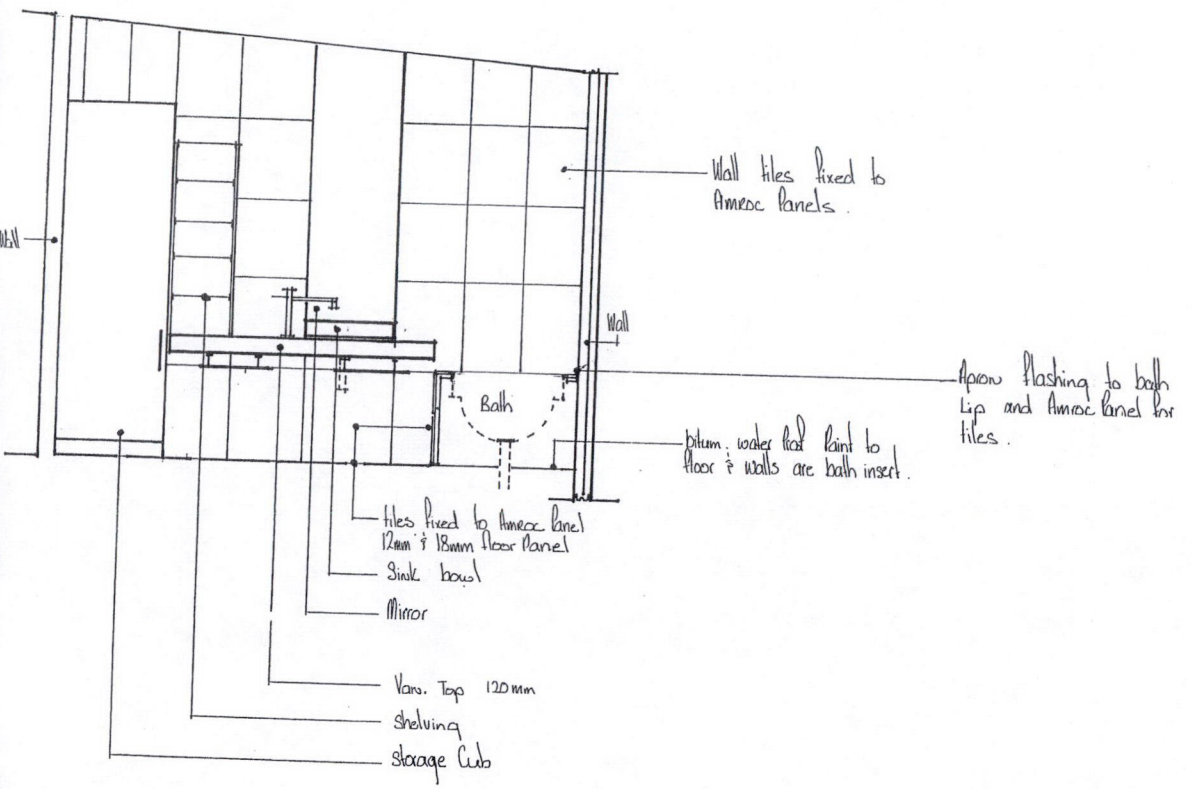
Parker Garages Ltd  
135 Meadowbank Road  
Meadowbank  
Auckland 1005  
Ph/fax 09-521 2137

Far North District  
Council  
Received

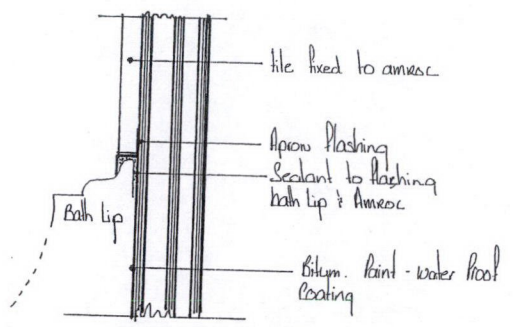


PGL  
© Design Copyright  
Parker Garages Ltd  
135 Meadowbank Road  
Meadowbank  
Auckland 1005  
Ph/fax 09-521 2137

BATH ROOM FITTINGS 1.20



FLASHING DETAIL



Bath flashing

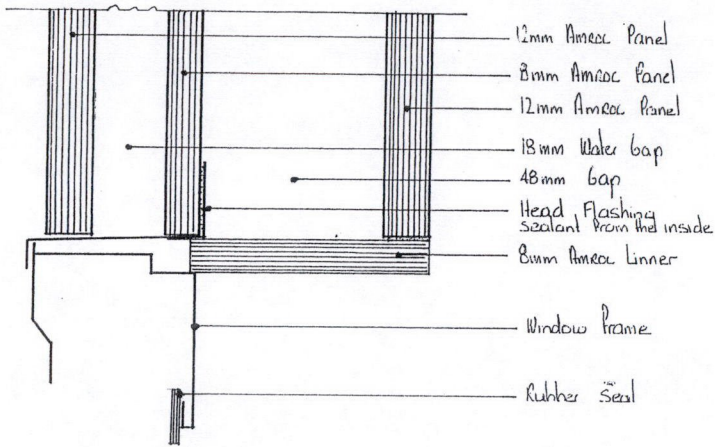
Far North District  
Council  
Received



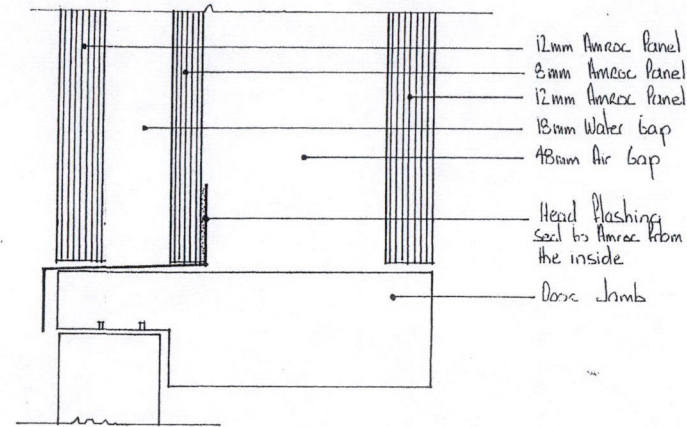
PGL  
© Design Copyright

Parker Garages Ltd  
135 Meadowbank Road  
Meadowbank  
Auckland 1005  
Ph/fax 09-521 2137

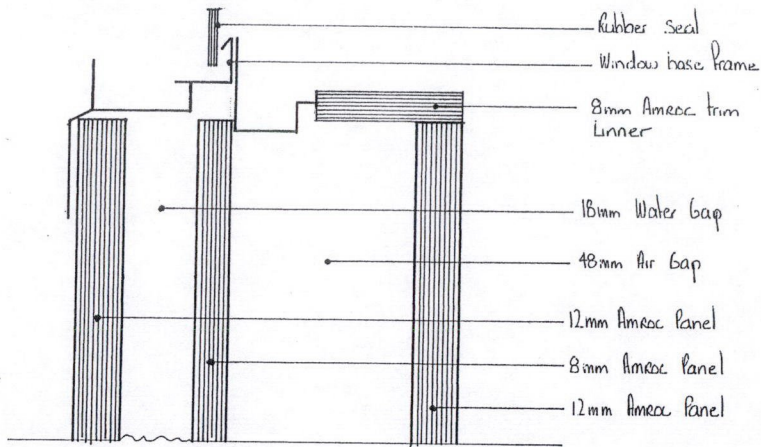
WINDOW HEAD DETAIL



DOOR HEAD DETAIL



WINDOW BASE DETAIL

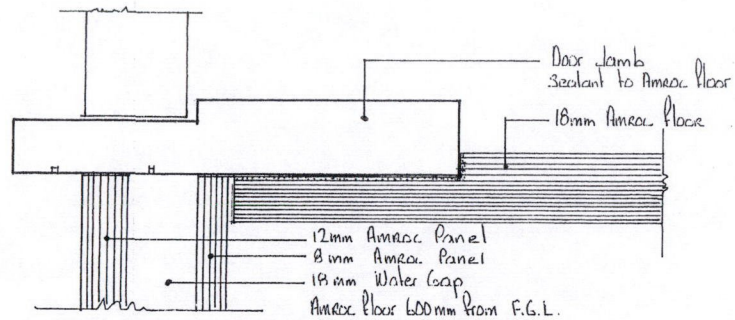


Window installed & sealed below 12mm Amroc inside panel fixed

W1

AMROC NZ LTD copyright

DOOR BASE DETAIL



AMROC NZ LTD copyright

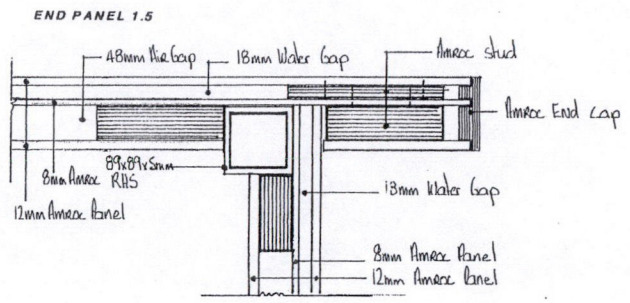
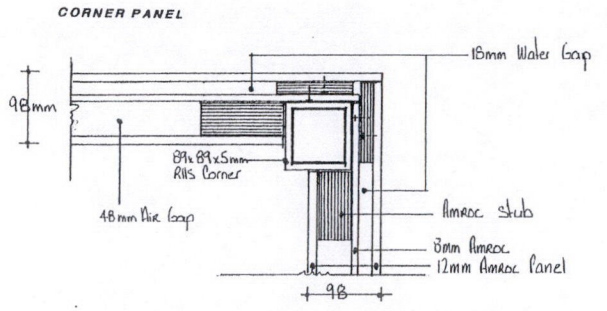
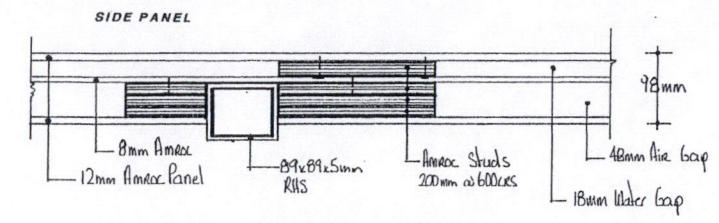
D1

Far North District  
Council  
Received

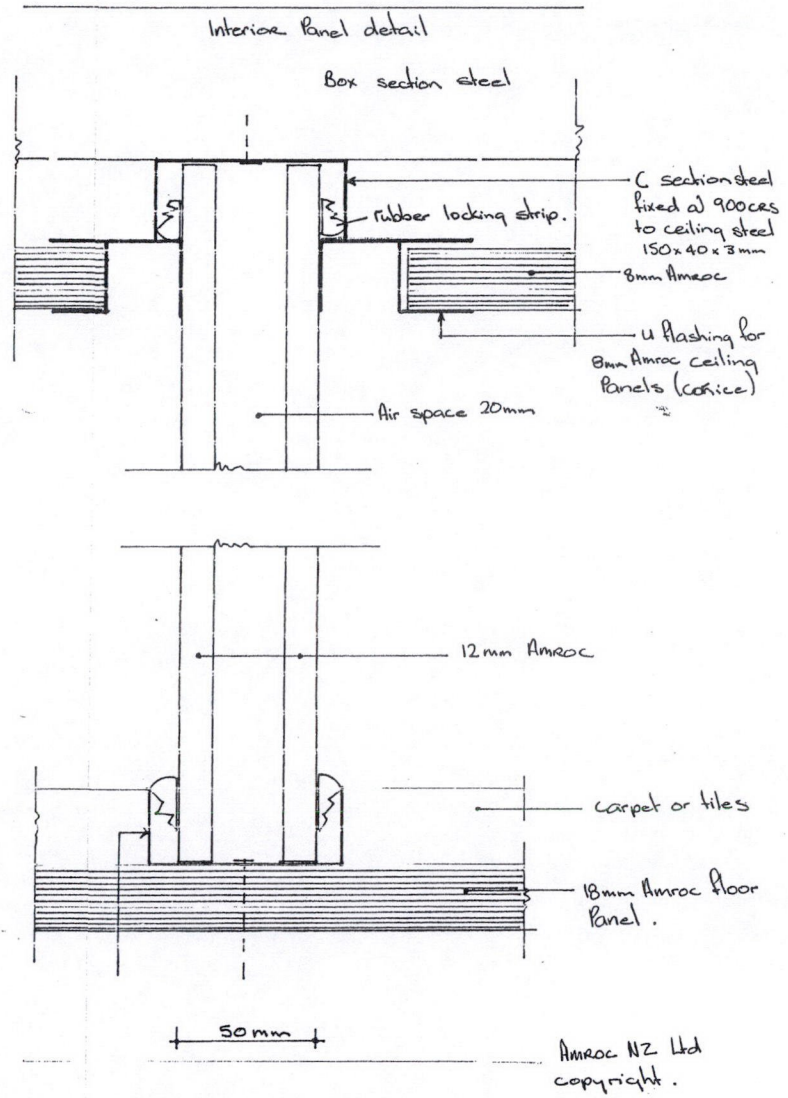


© Design Copyright

Parker Garages Ltd  
135 Meadowbank Road  
Meadowbank  
Auckland 1005  
Ph/fax 09-521 2137



COPYRIGHT



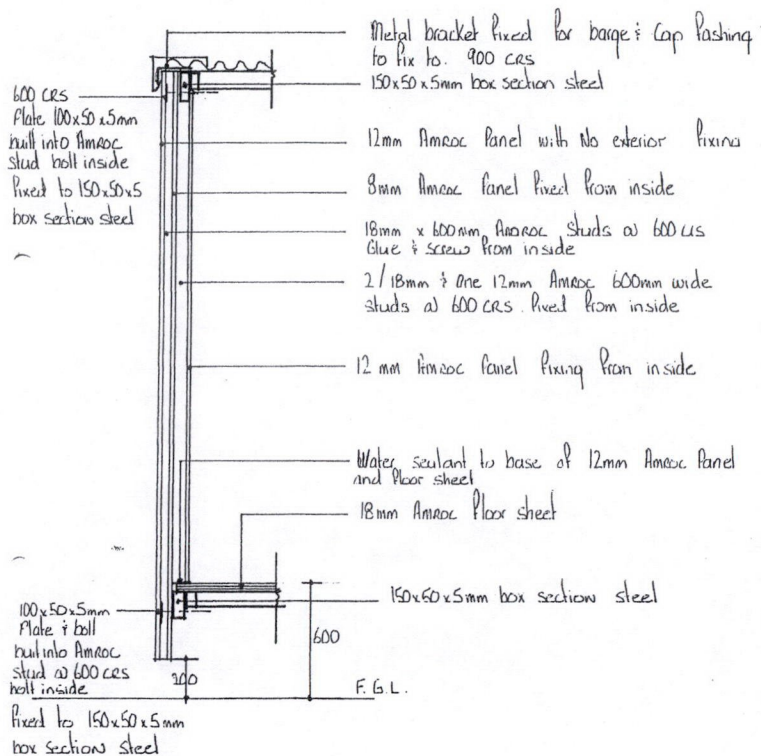


PGL  
© Design Copyright

Parker Garages Ltd  
135 Meadowbank Road  
Meadowbank  
Auckland 1005  
Ph/fax 09-521 2137

Far North District  
Council  
Received

EXTERIOR AMROC PANEL



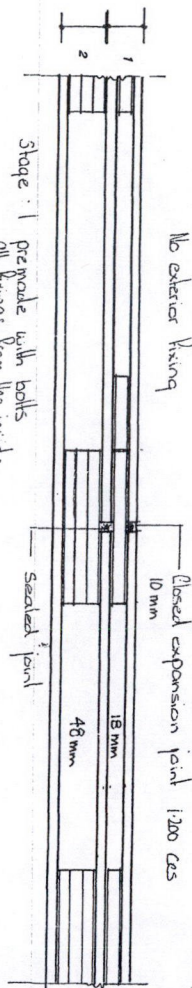
AMROC NZ LTD copyright

*Paul*  
scale 1:20

E1

AMROC NZ LTD copyright  
scale 1:50

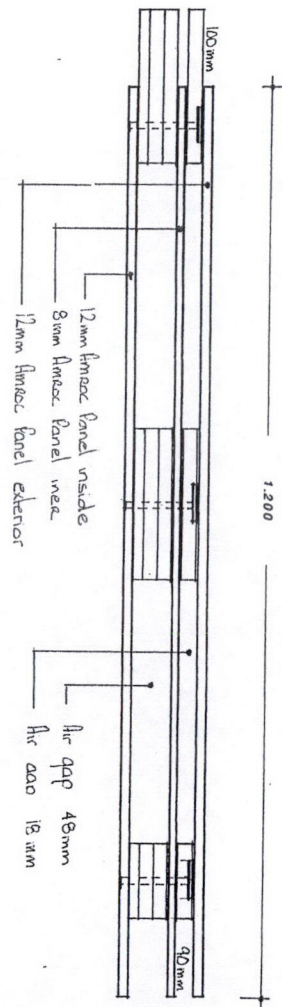
Stage 1  
Stage 2  
constructed on site allowing  
for services



premade with bolts  
all fixings from the inside

All Amroc studs are glued & screwed as shown  
from the inside.

EXTERIOR AMROC PANEL



E2

*Paul*  
19/12/05 HACL

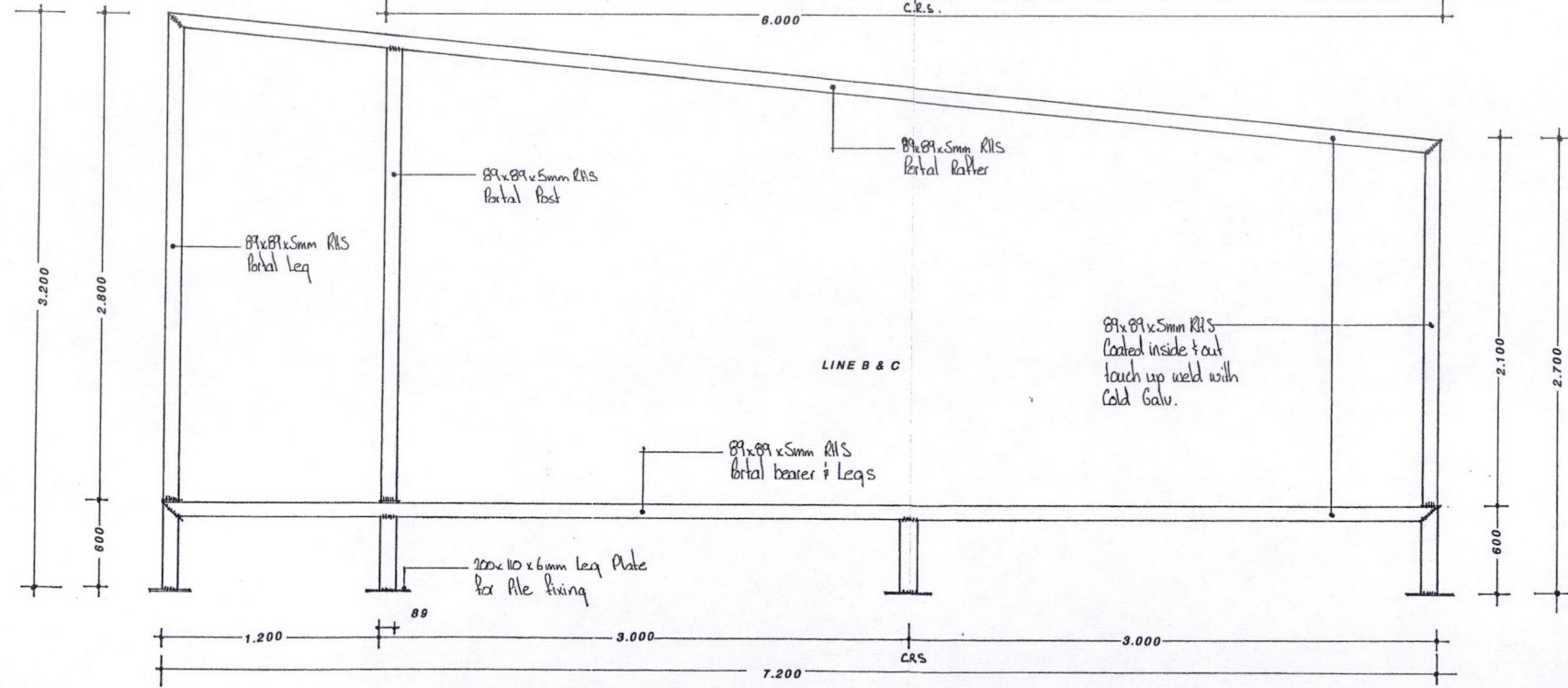
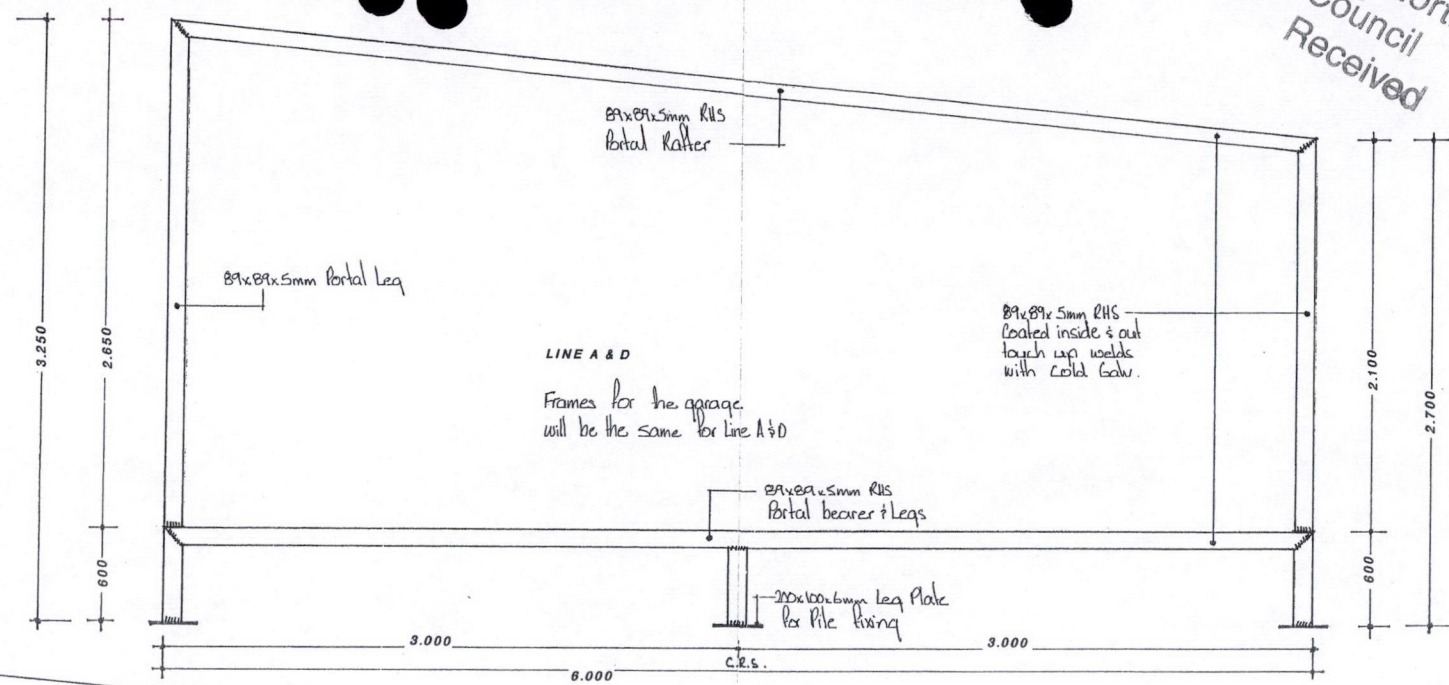


Far North District  
Council  
Received



PGL  
© Design Copyright

Parker Garages Ltd  
135 Meadowbank Road  
Meadowbank  
Auckland 1005  
Ph/fax 09-521 2137



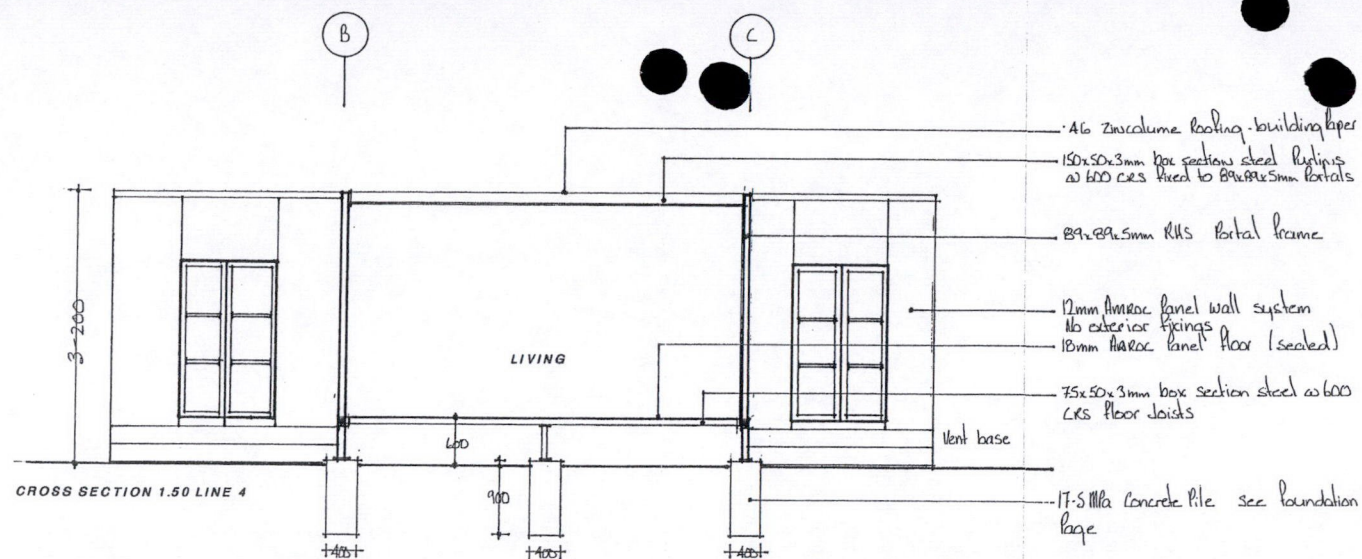
*[Signature]*  
HACL 17/12/05

Far North District  
Council  
Received

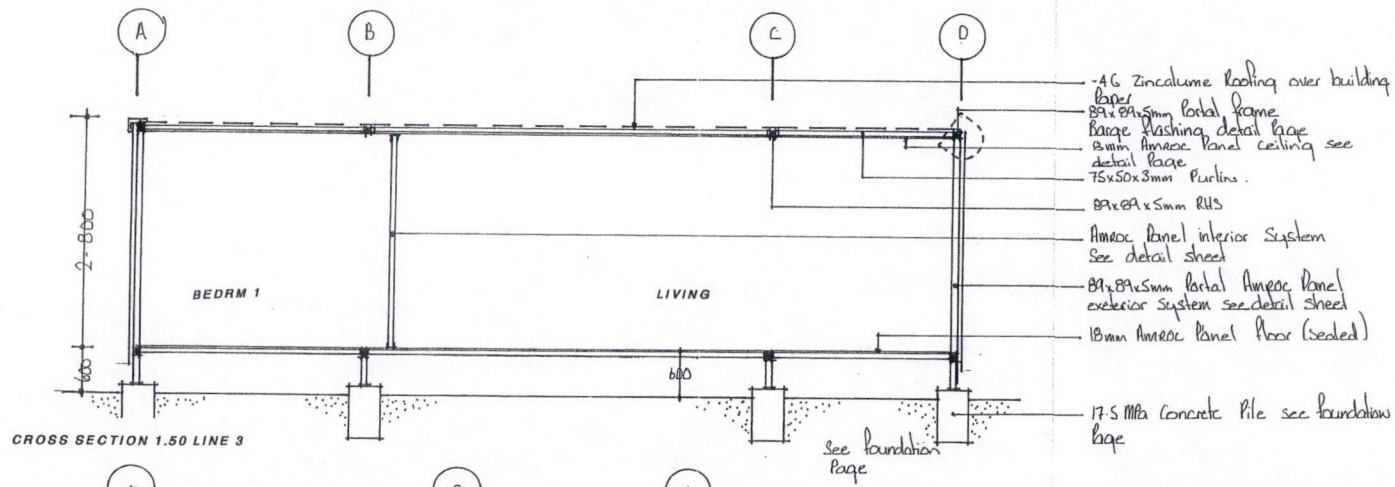


PGL  
© Design Copyright

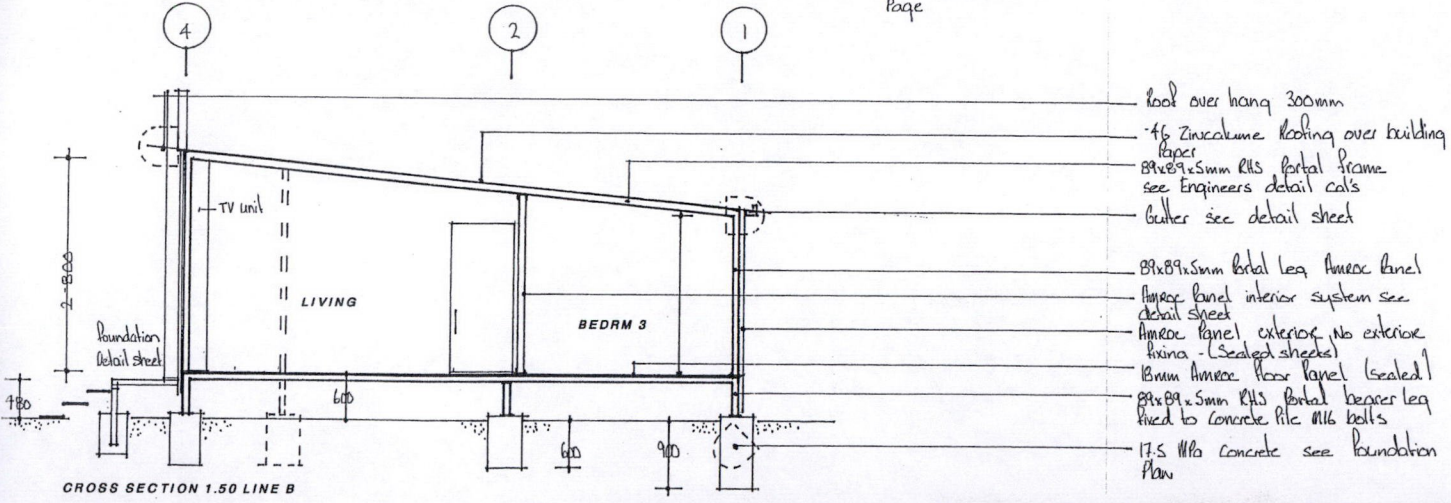
Parker Garages Ltd  
135 Meadowbank Road  
Meadowbank  
Auckland 1005  
Ph/fax 09-521 2137



- 4G Zincalume Roofing - building paper
- 150x50x3mm box section steel Purlins @ 600 c/c's fixed to 89x89x5mm portals
- 89x89x5mm RHS Portal frame
- 12mm Ameroc panel wall system  
No exterior fixings
- 18mm Ameroc panel floor (sealed)
- 75x50x3mm box section steel @ 600 C/Cs floor Joists
- 17.5 Mpa Concrete Pile see foundation page



- 4G Zincalume Roofing over building paper
- 89x89x5mm Portal frame
- Barge flashing detail page
- 13mm Ameroc panel ceiling see detail page
- 75x50x3mm Purlins
- 89x89x5mm RHS
- Ameroc panel interior system see detail sheet
- 89x89x5mm Portal Ameroc panel exterior system see detail sheet
- 18mm Ameroc panel floor (sealed)
- 17.5 Mpa Concrete Pile see foundation page



- Roof over hang 300mm
- 4G Zincalume Roofing over building paper
- 89x89x5mm RHS Portal frame see Engineers detail call's
- Gutter see detail sheet
- 89x89x5mm Portal leg Ameroc panel
- Ameroc panel interior system see detail sheet
- Ameroc panel exterior No exterior fixings - (Sealed sheets)
- 18mm Ameroc floor panel (sealed)
- 89x89x5mm RHS Portal bearer leg fixed to concrete pile M16 bolts
- 17.5 Mpa concrete see foundation plan

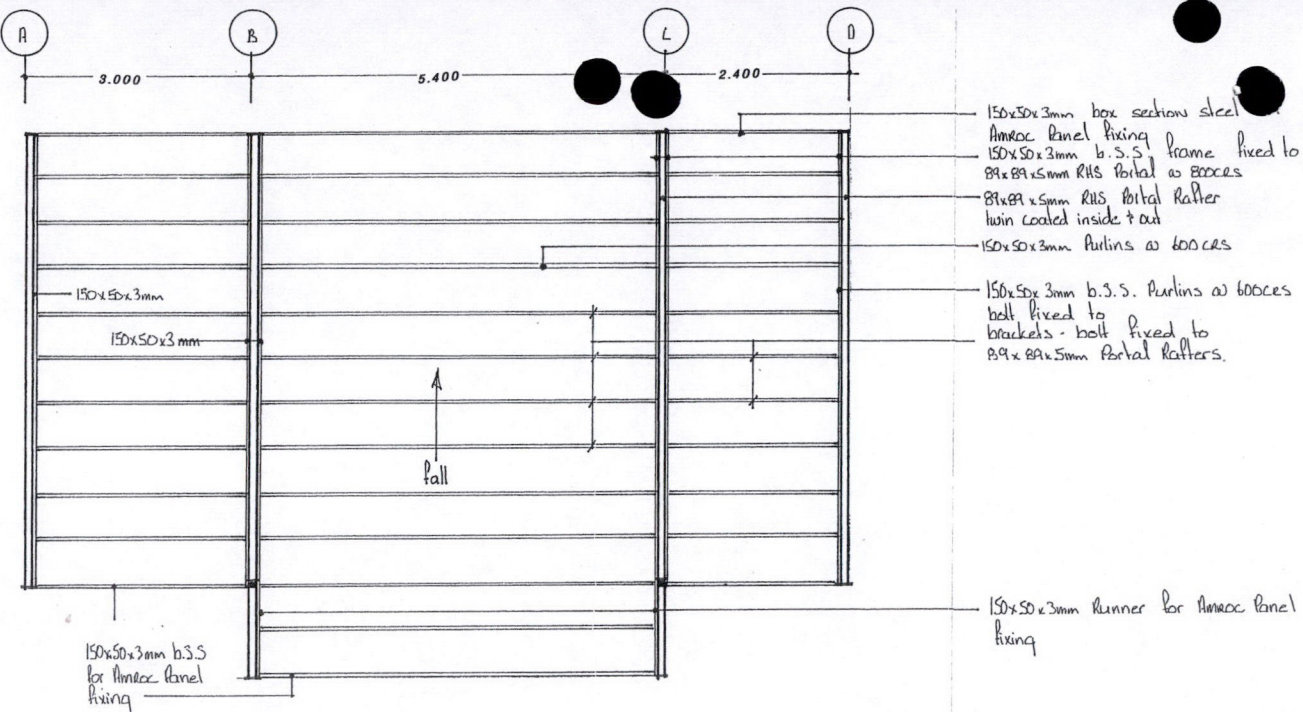
Checked for  
Structural content  
for HALL 19/12/05



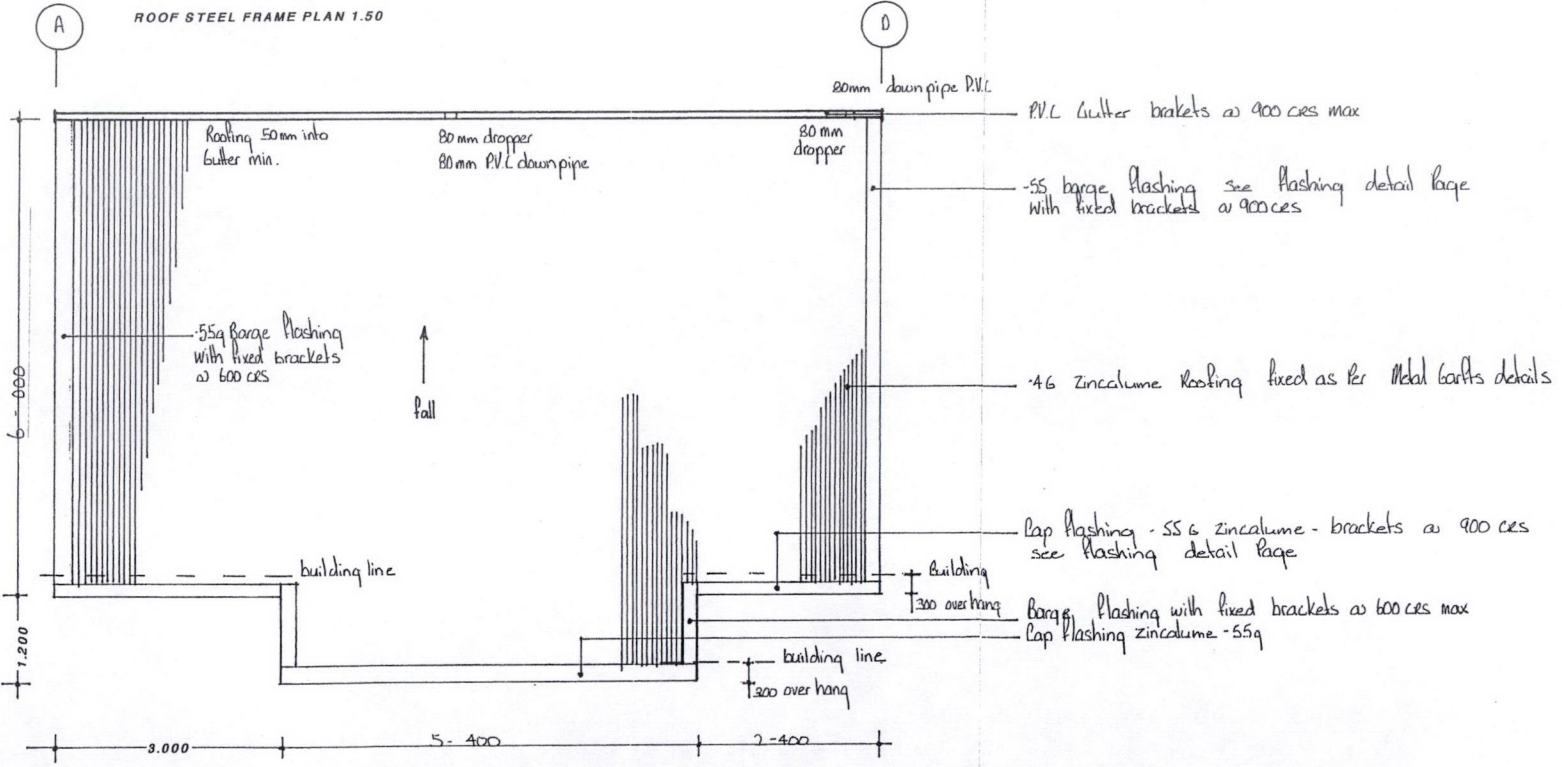
© Design Copyright

Parker Garages Ltd  
135 Meadowbank Road  
Meadowbank  
Auckland 1005  
Ph/fax 09-521 2137

Far North District  
Council  
Received



ROOF STEEL FRAME PLAN 1.50



ROOF PLAN 1.50

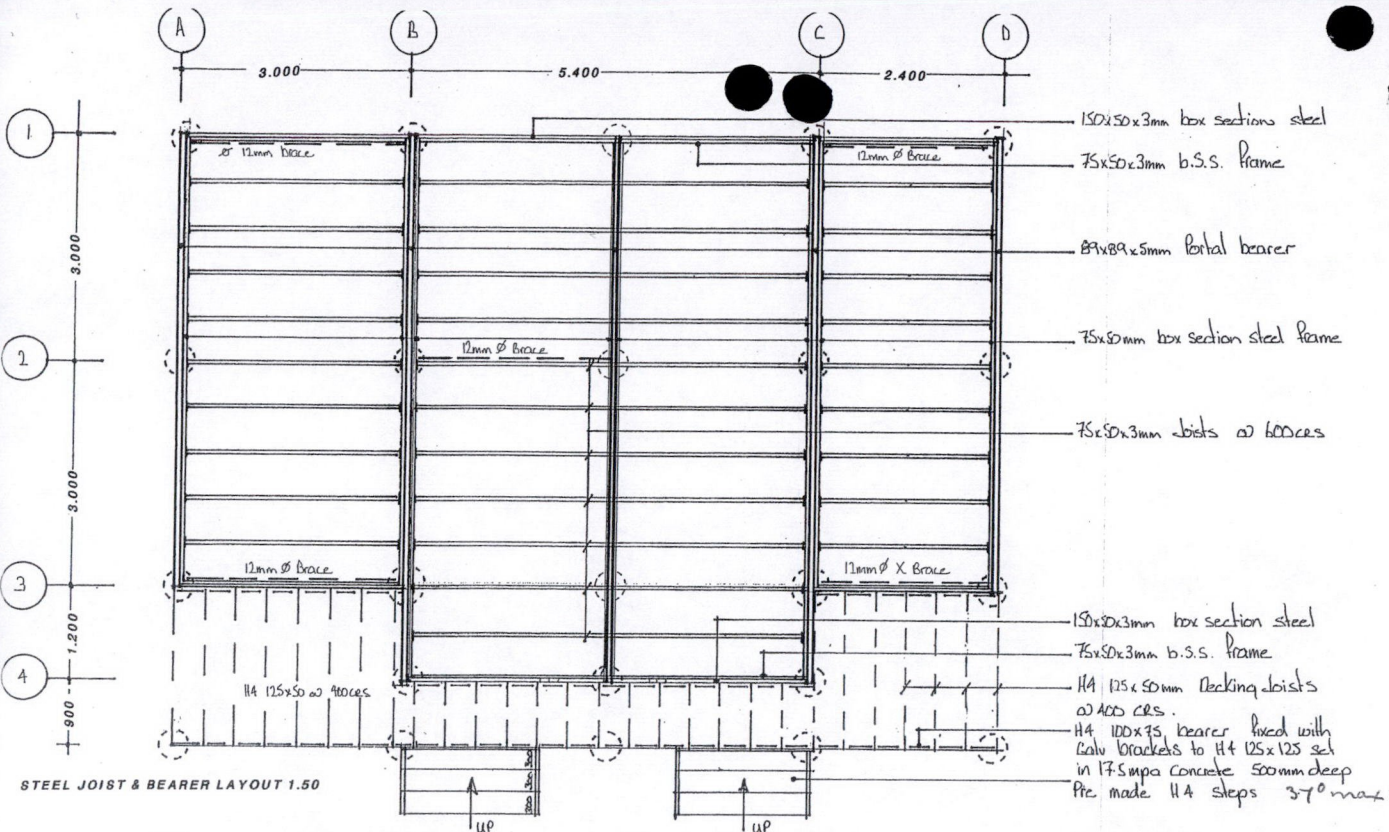
Checked for  
structural content  
*[Signature]*  
HCC 19/12/05

Far North District  
Council  
Received

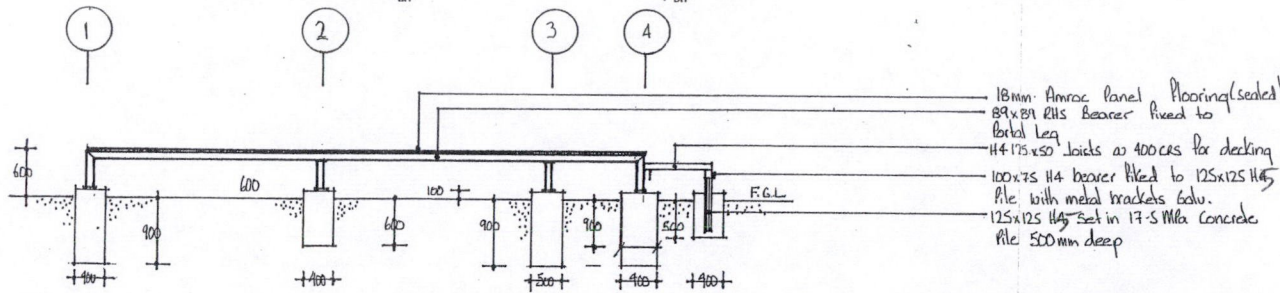


PGL  
© Design Copyright

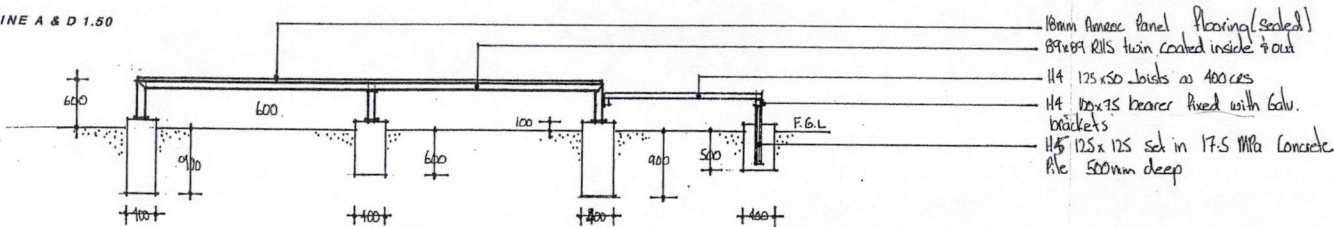
Parker Garages Ltd  
135 Meadowbank Road  
Meadowbank  
Auckland 1005  
Ph/fax 09-521 2137



STEEL JOIST & BEARER LAYOUT 1.50



LINE A & D 1.50



LINE B & C 1.50

Checked for  
structural content  
*[Signature]*  
19/12/05

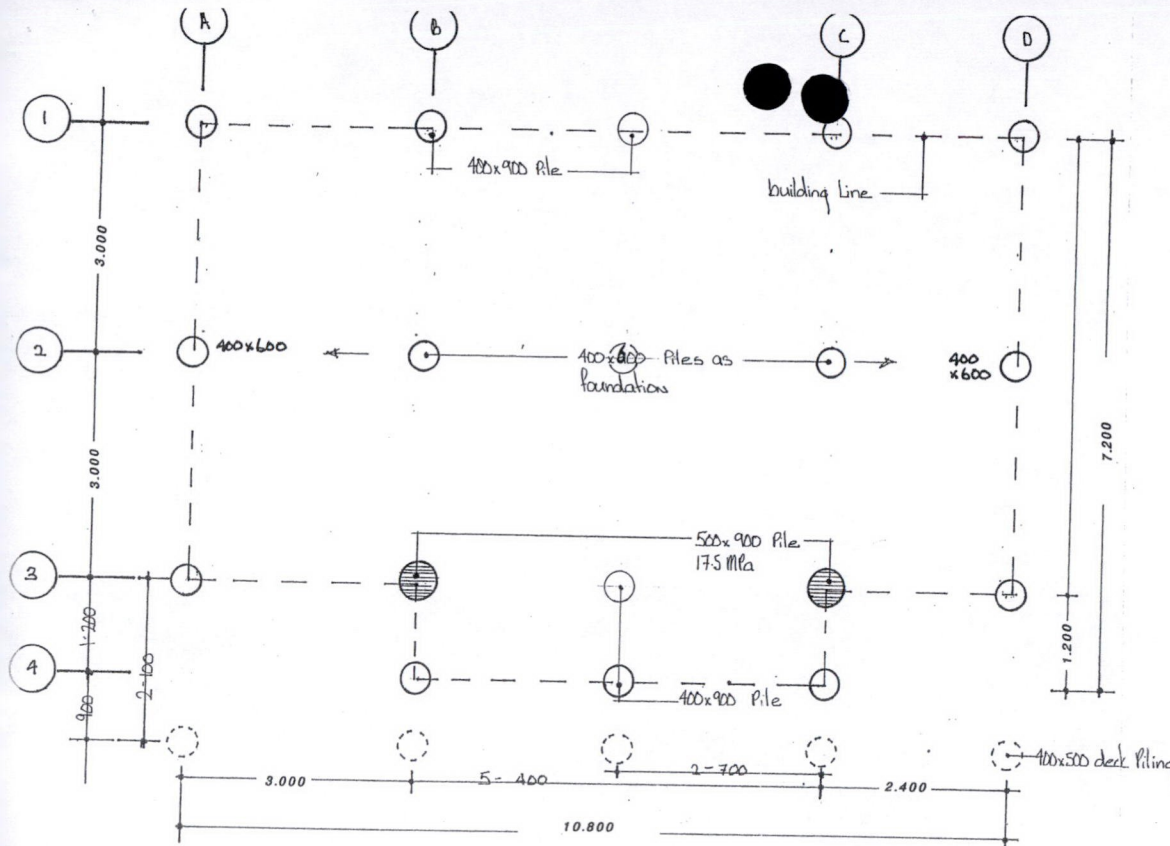
RHS Steel Joists  
Steel bearers  
114 Joists



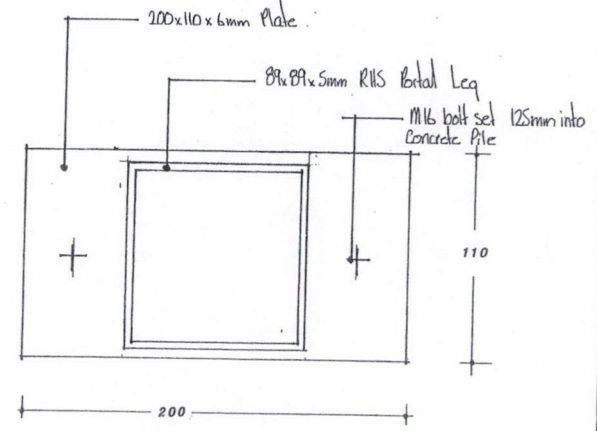
PGL  
© Design Copyright

Parker Garages Ltd  
135 Meadowbank Road  
Meadowbank  
Auckland 1005  
Ph/fax 09-521 2137

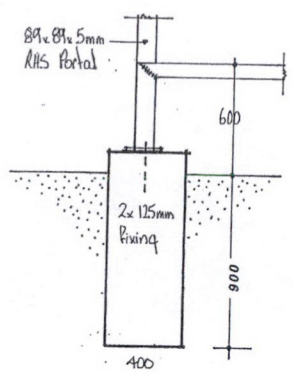
Far North District  
Council  
Received



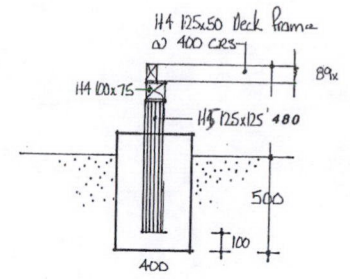
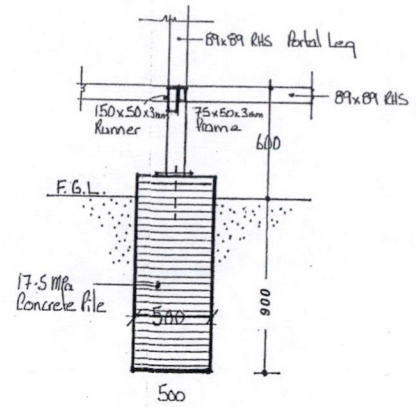
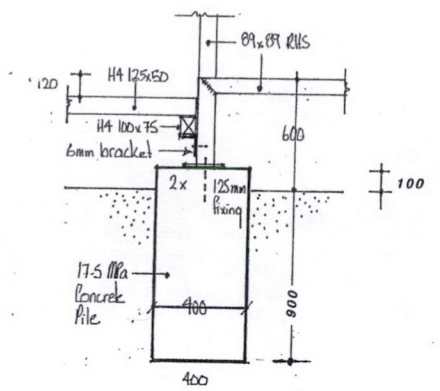
FOUNDATION PLAN 1.50



PORTAL LEG CONNECTION



CONCRETE PILE DETAILS 1.20



Note all 89x89x5mm Portal Frames are twin coated inside and out  
All decking Framing is H4

Checked for structural content  
for H4/CL 19/12/05

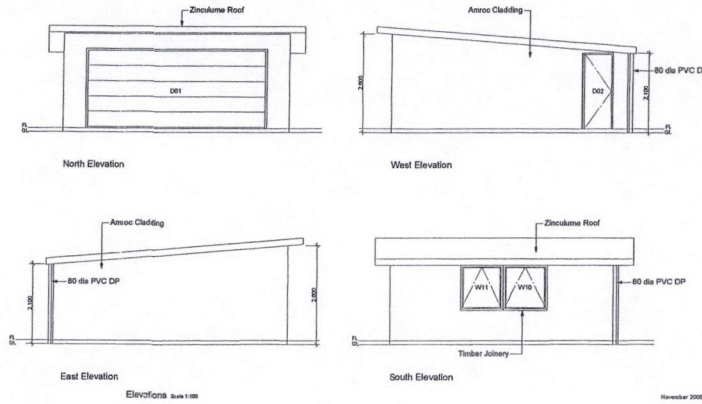
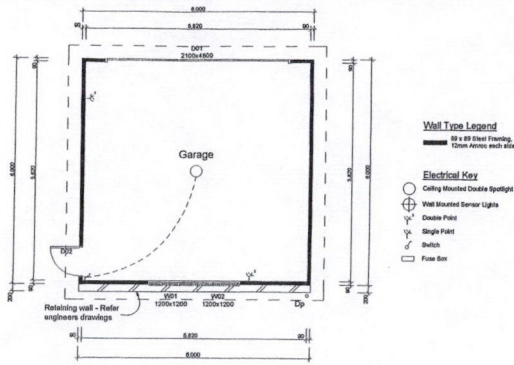
Foundations & Concrete Piles  
Portal Leg connections



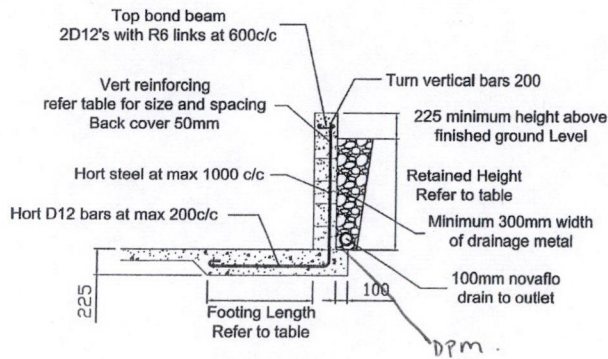
PGL  
© Design Copyright

Parker Garages Ltd  
135 Meadowbank Road  
Meadowbank  
Auckland 1005  
Ph/fax 09-521 2137

Far North District  
Council  
Received



Parker Garages - Garage © Floor Plan Date: 1/10/08



**NOTES**

footings to be founded in firm original ground - min 100 kPa safe bearing capacity

Ground to be hort behind wall for a distance at least equal to the retained height OR the retained height is to be assumed greater

Retained Height	Footing Length	Vertical Steel
2200	1400	D16 @ 200*
1800	1100	D16 @ 600*
1500	900	D16 @ 800
1200	500	D12 @ 600
900	400	D12 @ 600

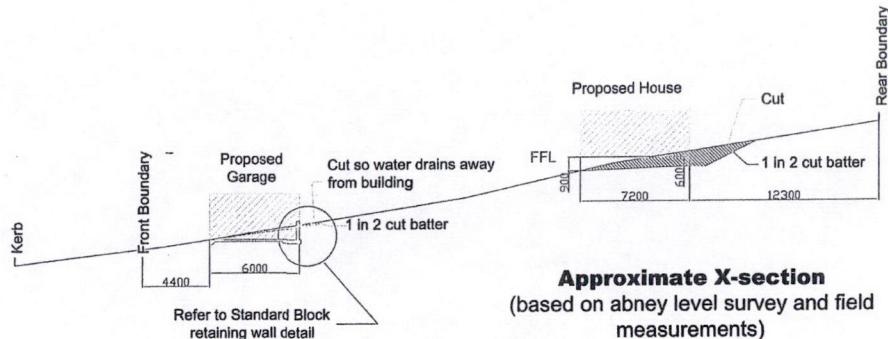
\* Can reduce vertical steel by half at 1/2 height and by 3/4 above 3/4 height

**Standard 200 Block Retaining Wall Details**

25 Taumatawiwi St, Opononi  
FRASER THOMAS LTD

25 Taumatawiwi St  
Opononi

**Earthworks and Retaining Wall Details**



FRASER THOMAS LTD

Job No: 37691  
Scale: 1:250 (A4)