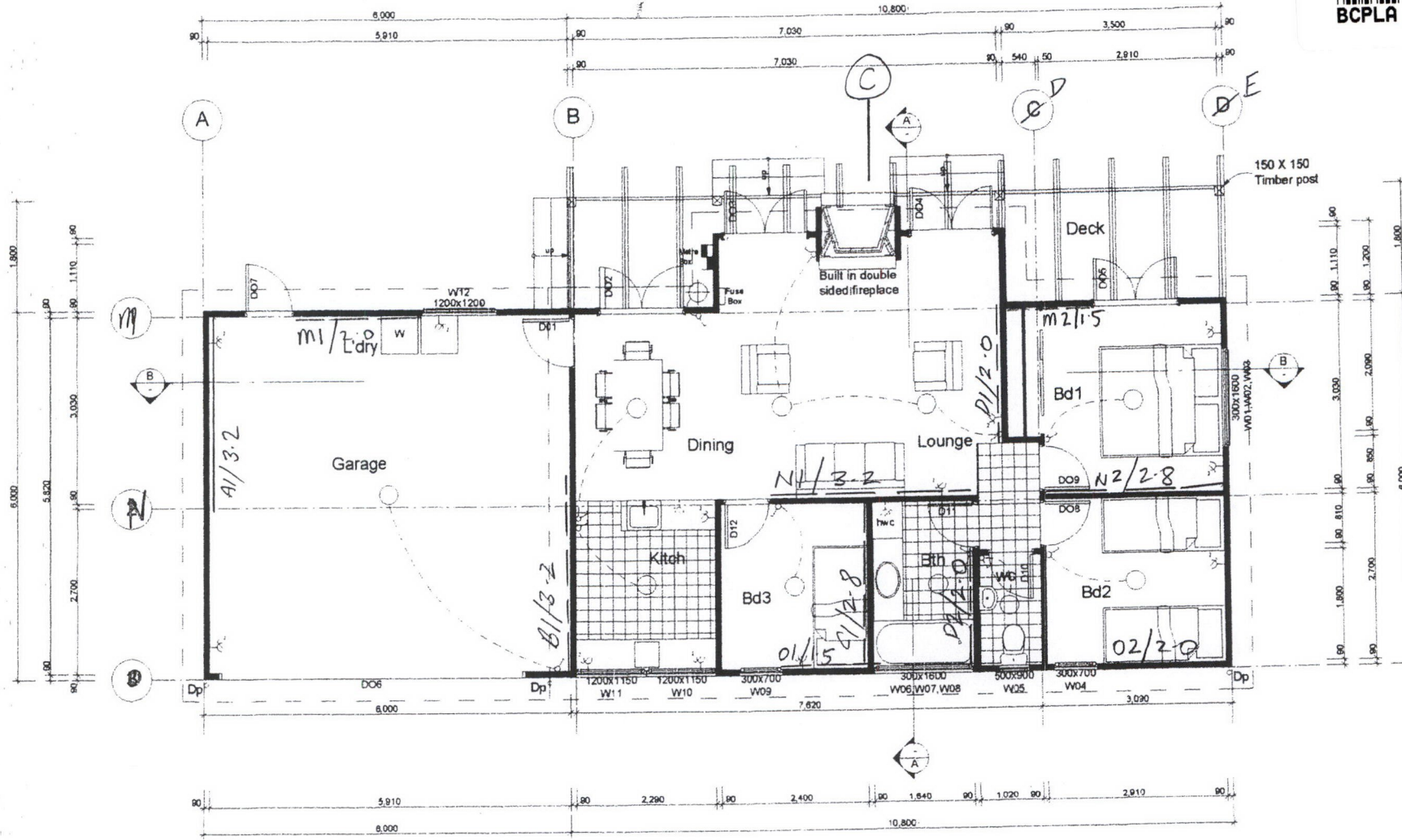




BCPLA



- Electrical Key**
- Fuse Box
  - Switch
  - Single Point
  - Double Point
  - Wall Mounted Sensor Lights
  - Ceiling Mounted Double Spotlight
- Floor Finishes**
- 200 x 200 Selected Tiles
- Wall Type Legend**
- 89 x 89 Steel Framing, 12m Amroc each side

Parker Garages - 3 Bedroom Studio Floor Plan Scale 1:100

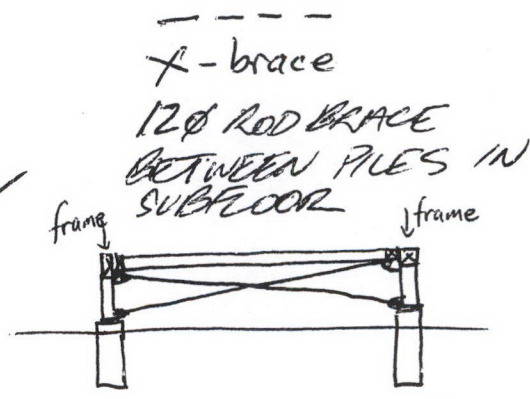
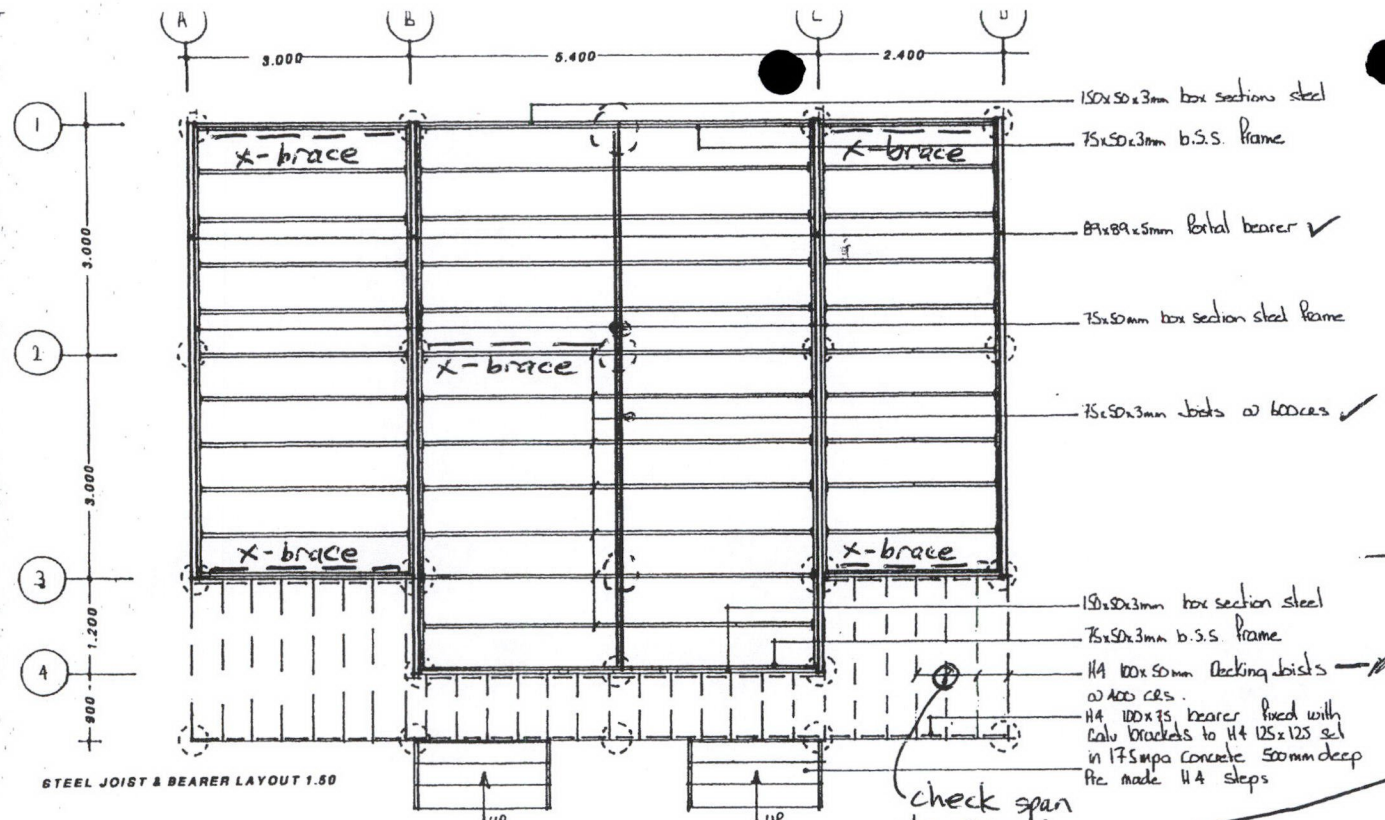
November 2005 02

Far North District Council Received

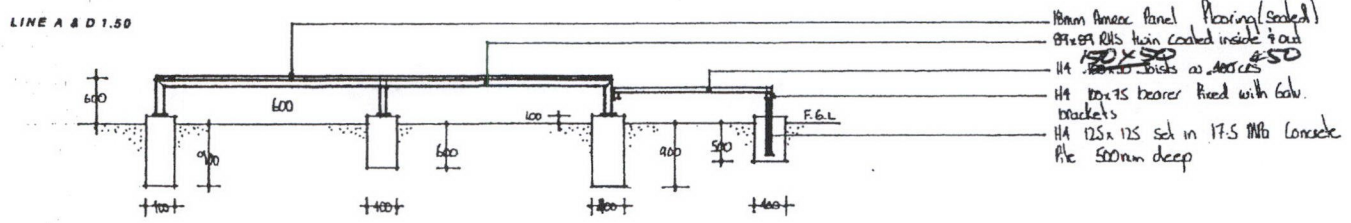
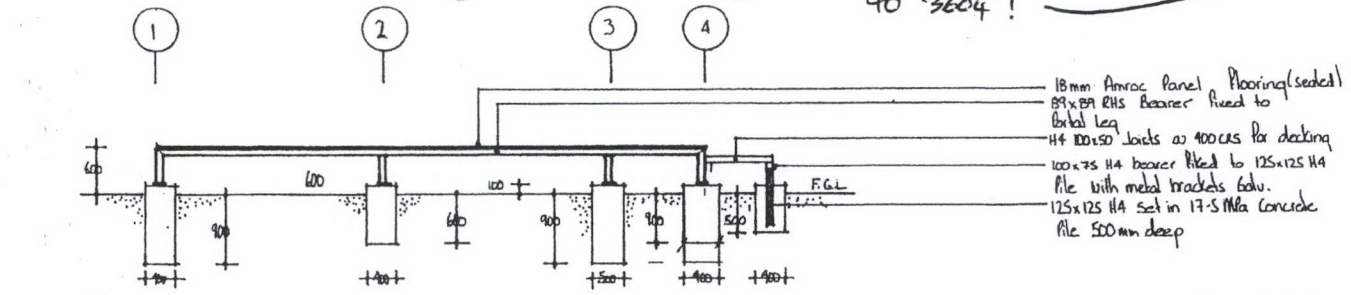


PGL  
© Design Copyright

Parker Garages Ltd  
135 Meadowbank Road  
Meadowbank  
Auckland 1005  
Ph/fax 09-521 2137



max span 1.25m for 100x50's @ 400cs  
 ULR 150x50 @ 450cs  
 for 2.1m span.



Far North District  
 Council  
 Received

RHS Steel Joists  
 Steel bearers  
 H4 Joists

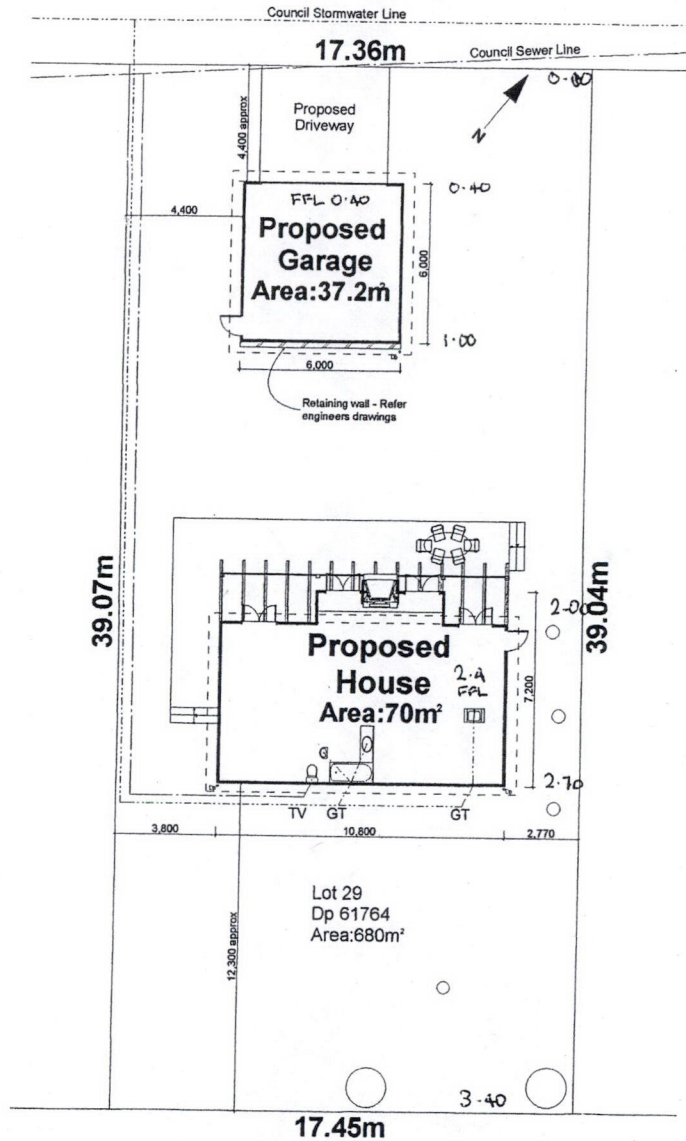
# Taumatawiwi St



PGL

© Design Copyright

Parker Garages Ltd  
135 Meadowbank Road  
Meadowbank  
Auckland 1005  
Ph/fax 09-521 2137



## DRAWING INDEX

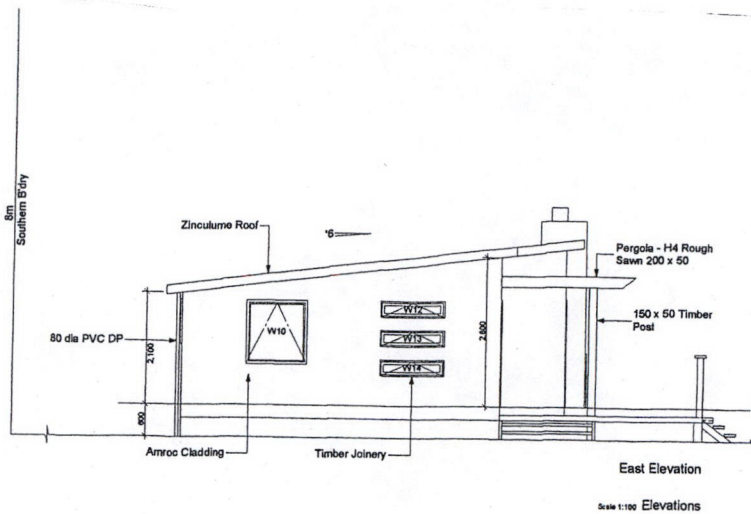
Site Plan	01
Floor Plan	01
Elevations	01
Garage Plan	1A
Garage Elevations	1A
Excavation	1A
Retaining Wall Detail	1A

## Typical Details

Foundation Plan	02
Sub Flooring	03
Roof Framing	04
Roof Plan	04
Cross Sections	05
Portal Frames	06
Structural Details	07
Structural Details	08
Window & Door Details	09
Bathroom Elevation	10
Bathroom Detail	10
Kitchen Layout	11
Kitchen Elevation	11
Garage Foundation	12
Garage Roof	12
Garage Cross Sections	12
Garage Detail	13

Site Plan Scale 1:200

## Parker Garages - 3 Bedroom House ©





PGL

© Design Copyright  
Parker Garages Ltd  
135 Meadowbank Road  
Meadowbank  
Auckland 1005  
Ph/fax 09-521 2137

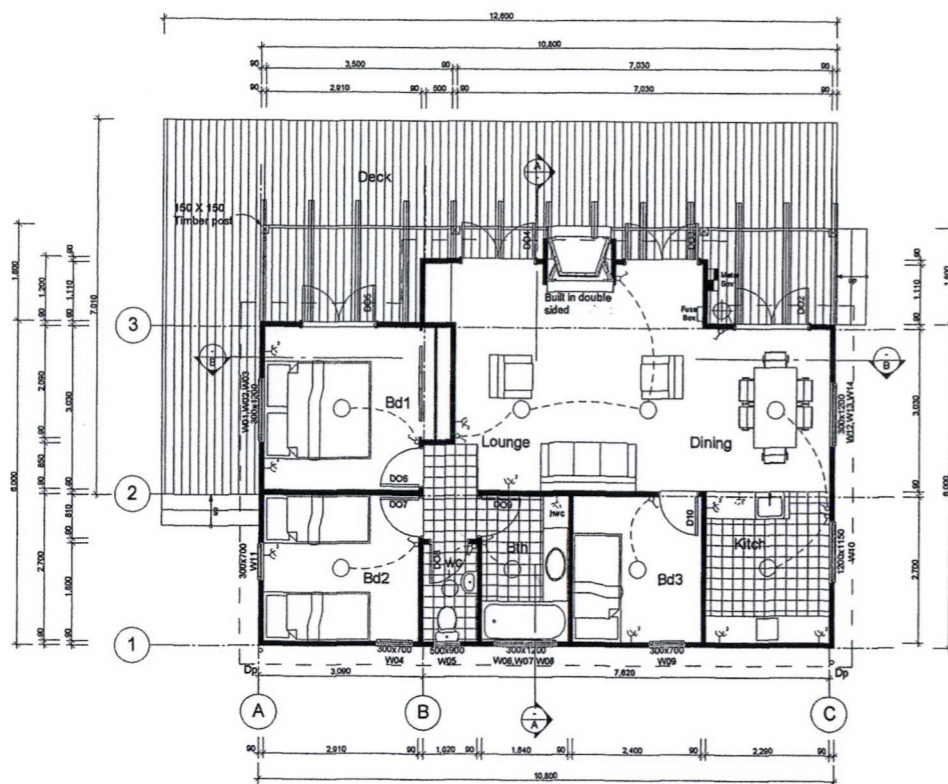
Taumatawiwi St

### Far North District Council NOTIFIABLE INSPECTIONS

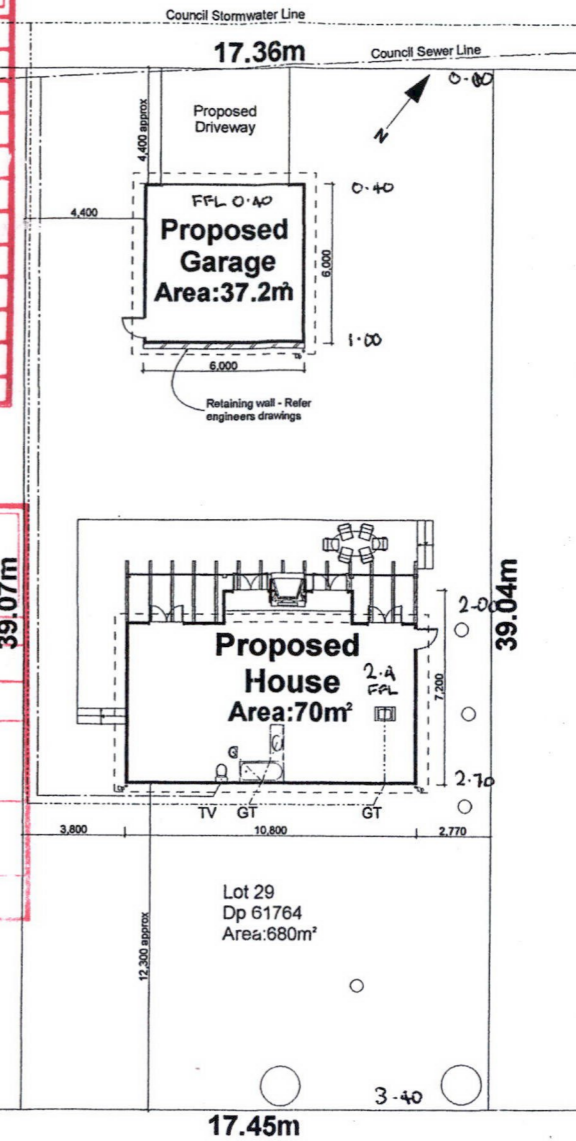
Site Inspection		
Footings / Foundation	/	
Slab	/	
Bond Beam	/	
Sub-floor	/	
Framing	/	
Exposed Rafter Strapping	/	
Pre-lime	/	
Shear Bracing	/	
Other Inspection	FLASHINGS	/
Final Inspection		/

### Far North District Council NOTIFIABLE INSPECTIONS Plumbing & Drainage

Pre-pipe under slab P & D	/	
Pre-Lime Plumbing in walls	/	
Sewer & Stormwater drainage	/	
Pre-lime back-filling trench	/	
Depth tank effluent disposal	/	
Pre-lime	/	
Other		



- Fuse Box
- Switch
- Single Point
- Double Point
- Wall Mounted Sensor Lights
- Ceiling Mounted Double Spotlight
- Electrical Key
- 200 x 200 Deflected Tiles
- Floor Finishes
- 80 x 80 Steel Framing, 12mm Amroc each side
- Wall Type Legend

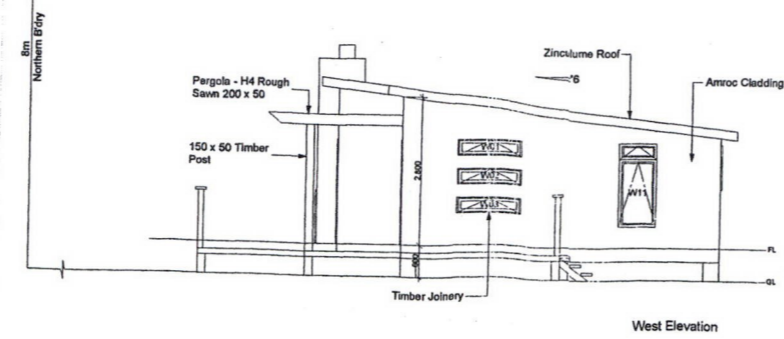
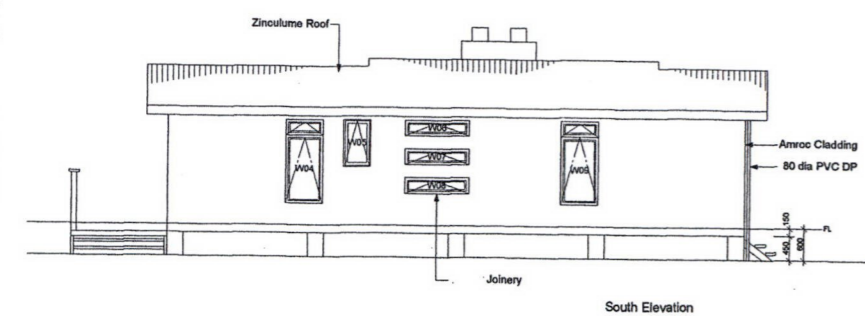
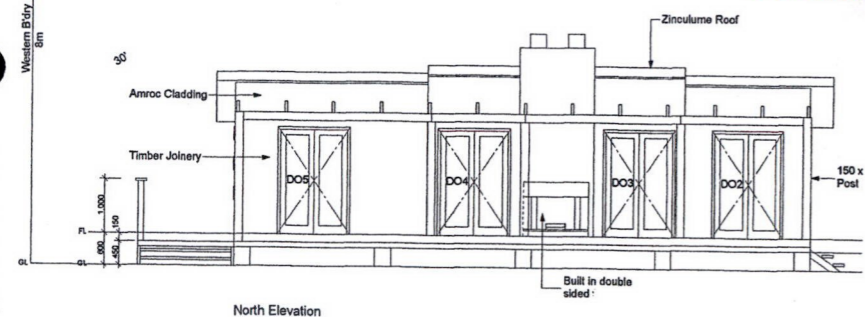


APPROVED PIM/BO 2006-1192  
 Date: 3 MARCH 06  
 Signed: [Signature]  
 FAR NORTH DISTRICT COUNCIL

THESE PLANS AND SPECIFICATIONS MUST BE KEPT 'ON SITE' DURING CONSTRUCTION. ALL BOUNDARY PEGS MUST BE LOCATED AND FLAGGED BEFORE WORK IS COMMENCED.

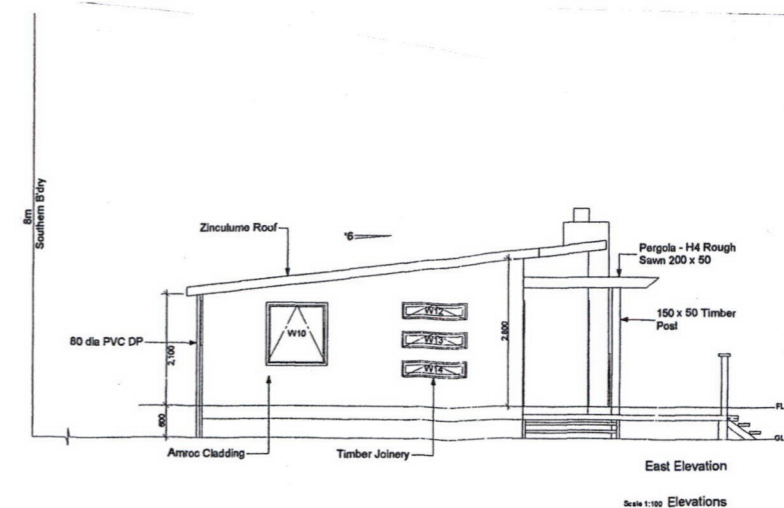
INSPECTION REQUIRED OF ALL WATER SUPPLY & SOIL/WASTE DISPOSAL PIPES, PRIOR TO COVERAGE WITH CONCRETE.

BUILDER TO CHECK LOCATIONS, LEVELS, DEPTHS ETC. OF ALL INGROUND SERVICES PRIOR TO COMMENCEMENT.



Site Plan Scale 1:200

### Parker Garages - 3 Bedroom House ©

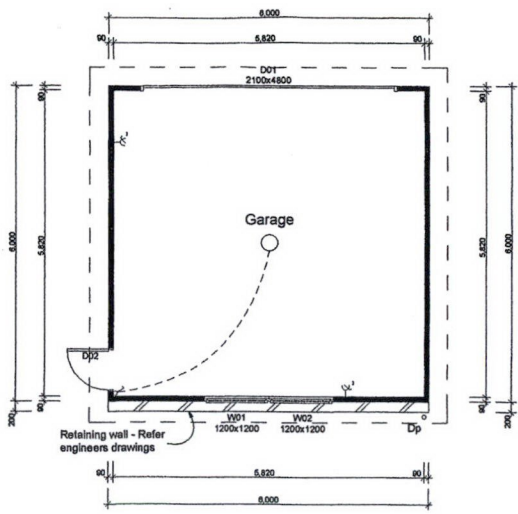


**DRAWING INDEX**

Site Plan	01
Floor Plan	01
Elevations	01
Garage Plan	1A
Garage Elevations	1A
Excavation	1A
Retaining Wall Detail	1A

**Typical Details**

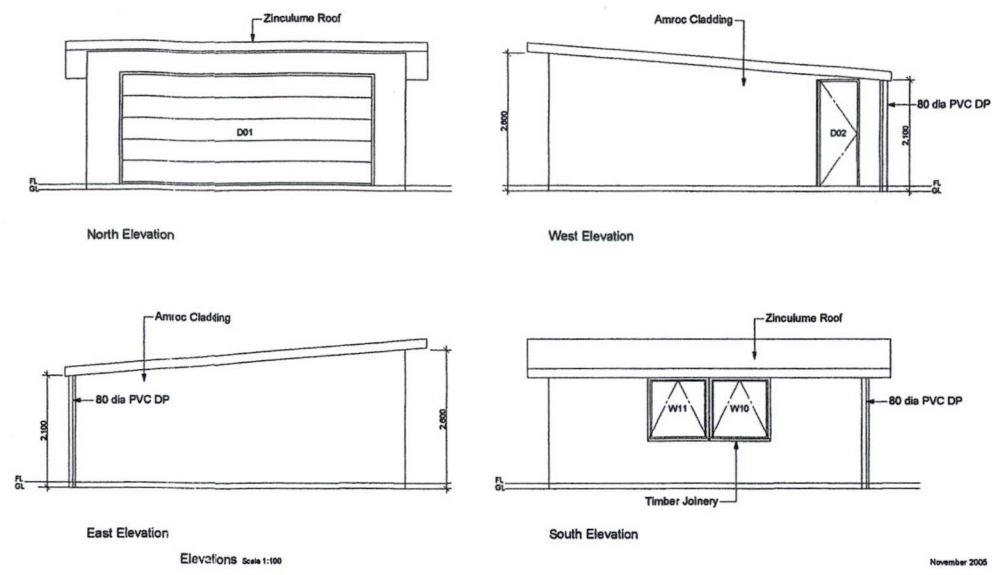
Foundation Plan	02
Sub Flooring	03
Roof Framing	04
Roof Plan	04
Cross Sections	05
Portal Frames	06
Structural Details	07
Structural Details	08
Window & Door Details	09
Bathroom Elevation	10
Bathroom Detail	10
Kitchen Layout	11
Kitchen Elevation	11
Garage Foundation	12
Garage Roof	12
Garage Cross Sections	12
Garage Detail	13



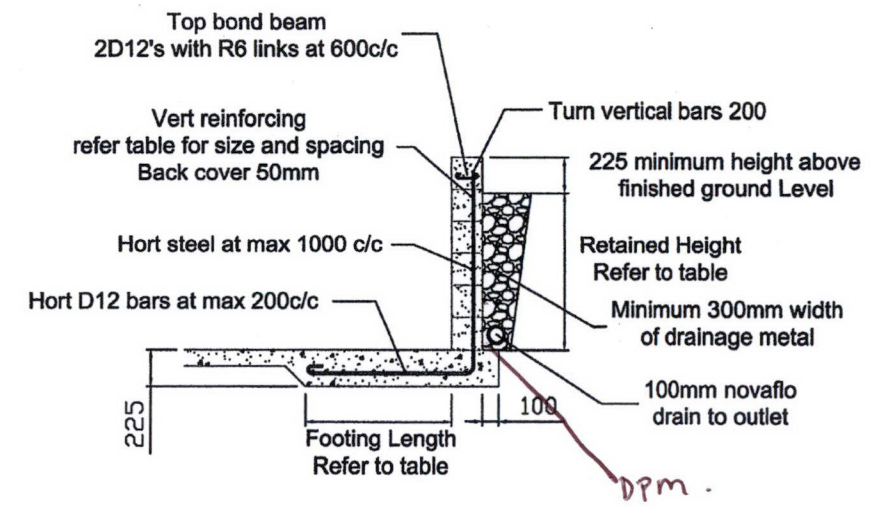
- Wall Type Legend**
- 80 x 89 Steel Framing, 12mm Amroc each side
- Electrical Key**
- Ceiling Mounted Double Spotlight
  - Wall Mounted Sensor Lights
  - Double Point
  - Single Point
  - Switch
  - Fuse Box

Far North District Council Received

**PGL**  
 © Design Copyright  
 Parker Garages Ltd  
 135 Meadowbank Road  
 Meadowbank  
 Auckland 1005  
 Ph/fax 09-521 2137



Parker Garages - Garage © Floor Plan Scale 1:100



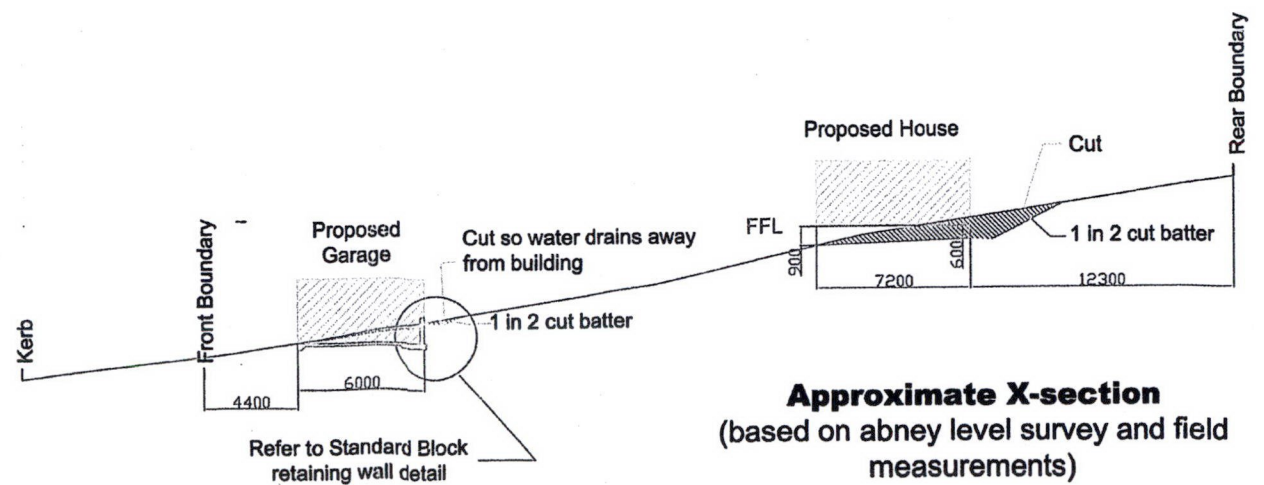
**NOTES**

footings to be founded in firm original ground - min 100 kPa safe bearing capacity

Ground to be hort behind wall for a distance at least equal to the retained height OR the retained height is to be assumed greater

Retained Height	Footing Length	Vertical Steel
2200	1400	D16 @ 200*
1800	1100	D16 @ 600*
1500	900	D16 @ 800
1200	500	D12 @ 600
900	400	D12 @ 600

\* Can reduce vertical steel by half at 1/2 height and by 1/4 above 3/4 height



**Standard 200 Block Retaining Wall Details**

**25 Taumatawiwi St, Opononi**  
**FRASER THOMAS LTD**

**Earthworks and Retaining Wall Details**

**25 Taumatawiwi St**  
**Opononi**

**FRASER THOMAS LTD**  
 Job No: 37691  
 Scale: 1:250 (A4)



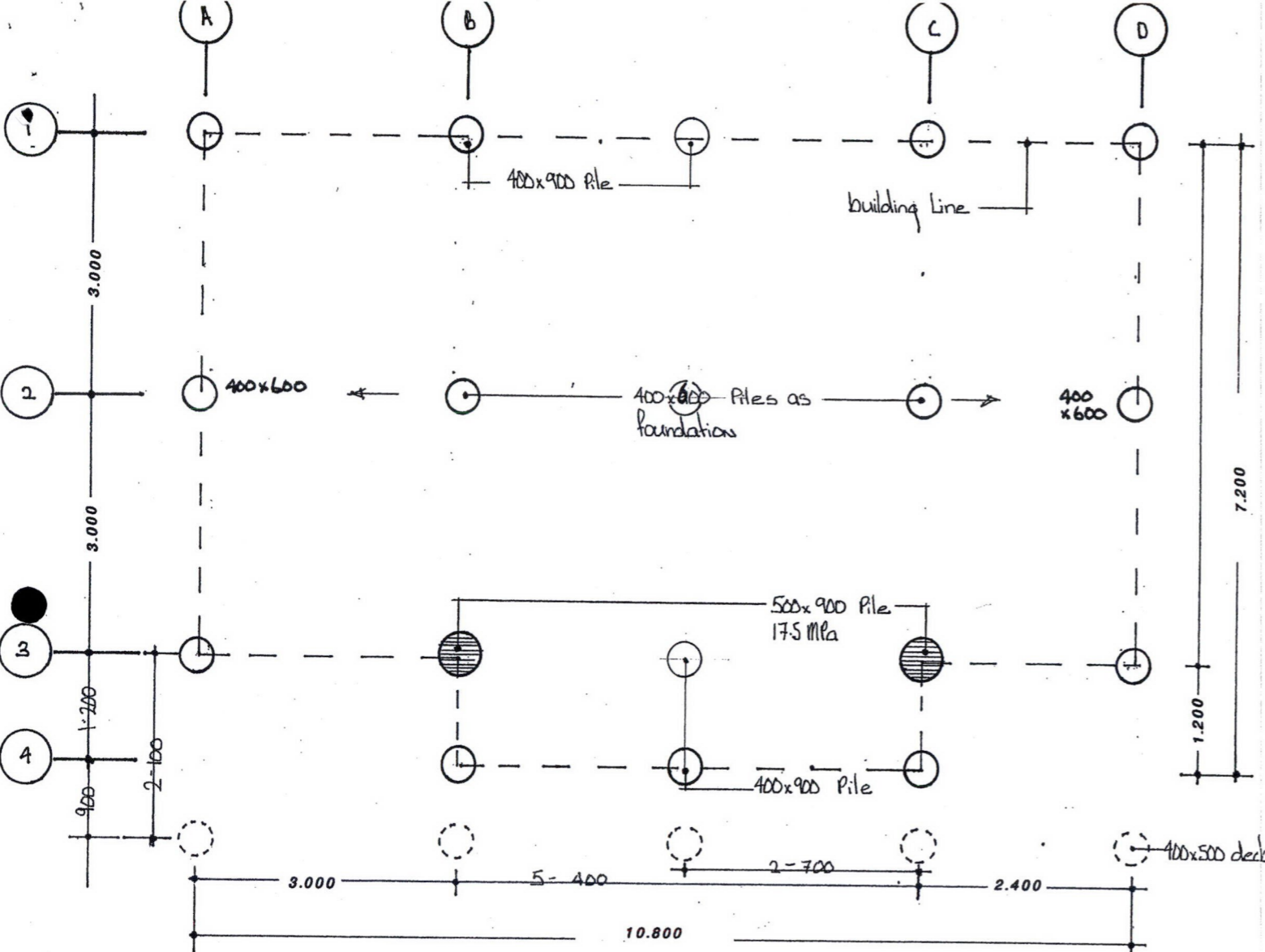
PGL

© Design Copyright

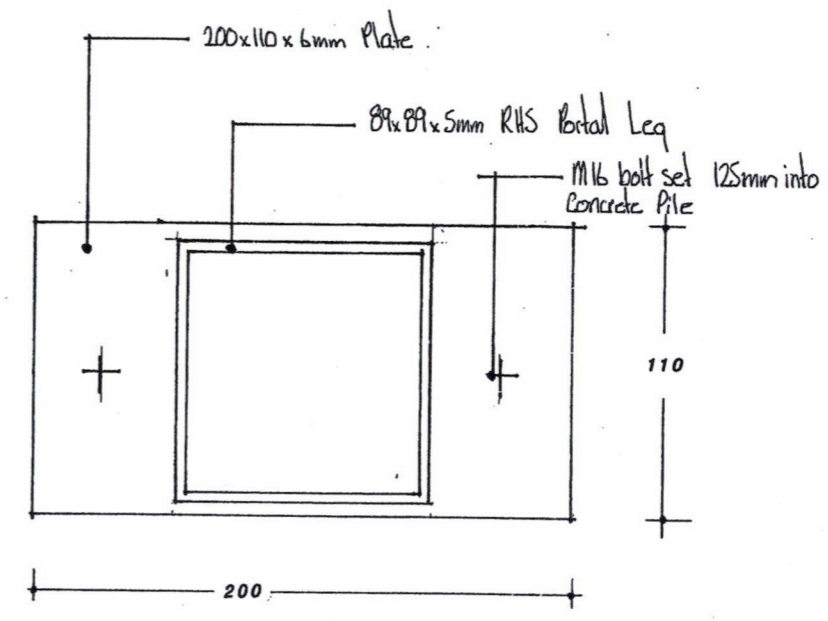
**COPYRIGHT**

Parker Garages Ltd  
135 Meadowbank Road  
Meadowbank  
Auckland 1005  
Ph/fax 09-521 2137

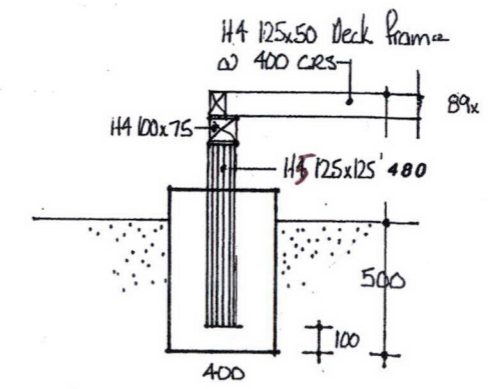
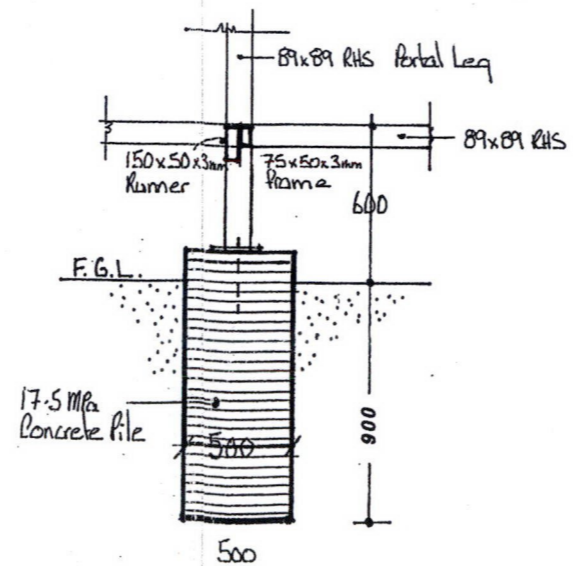
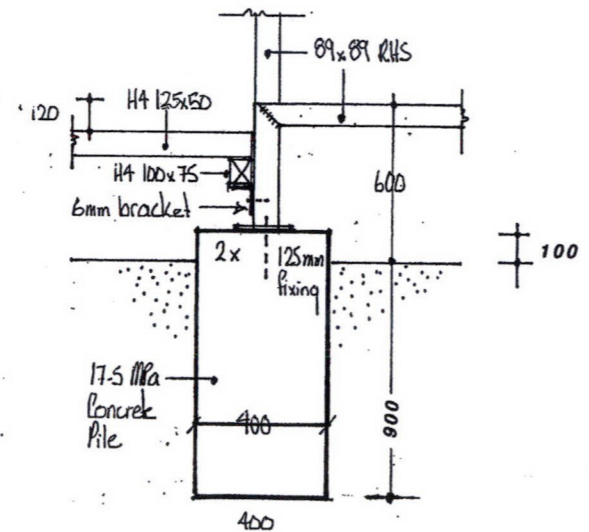
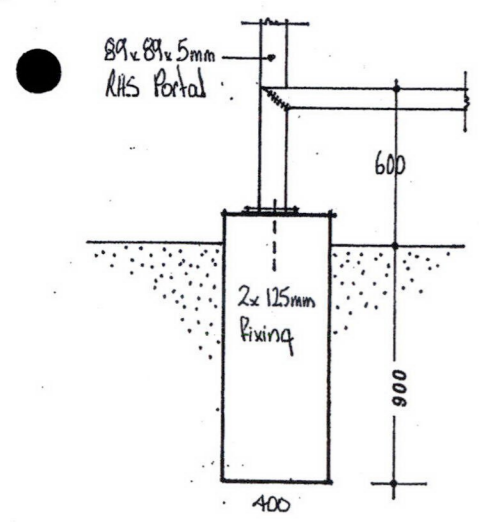
Far North District Council  
Received



FOUNDATION PLAN 1.50



PORTAL LEG CONNECTION



CONCRETE PILE DETAILS 1.20

Note all 89x89x5mm Portal Frames are twin coated inside and out  
All decking Framing is H4

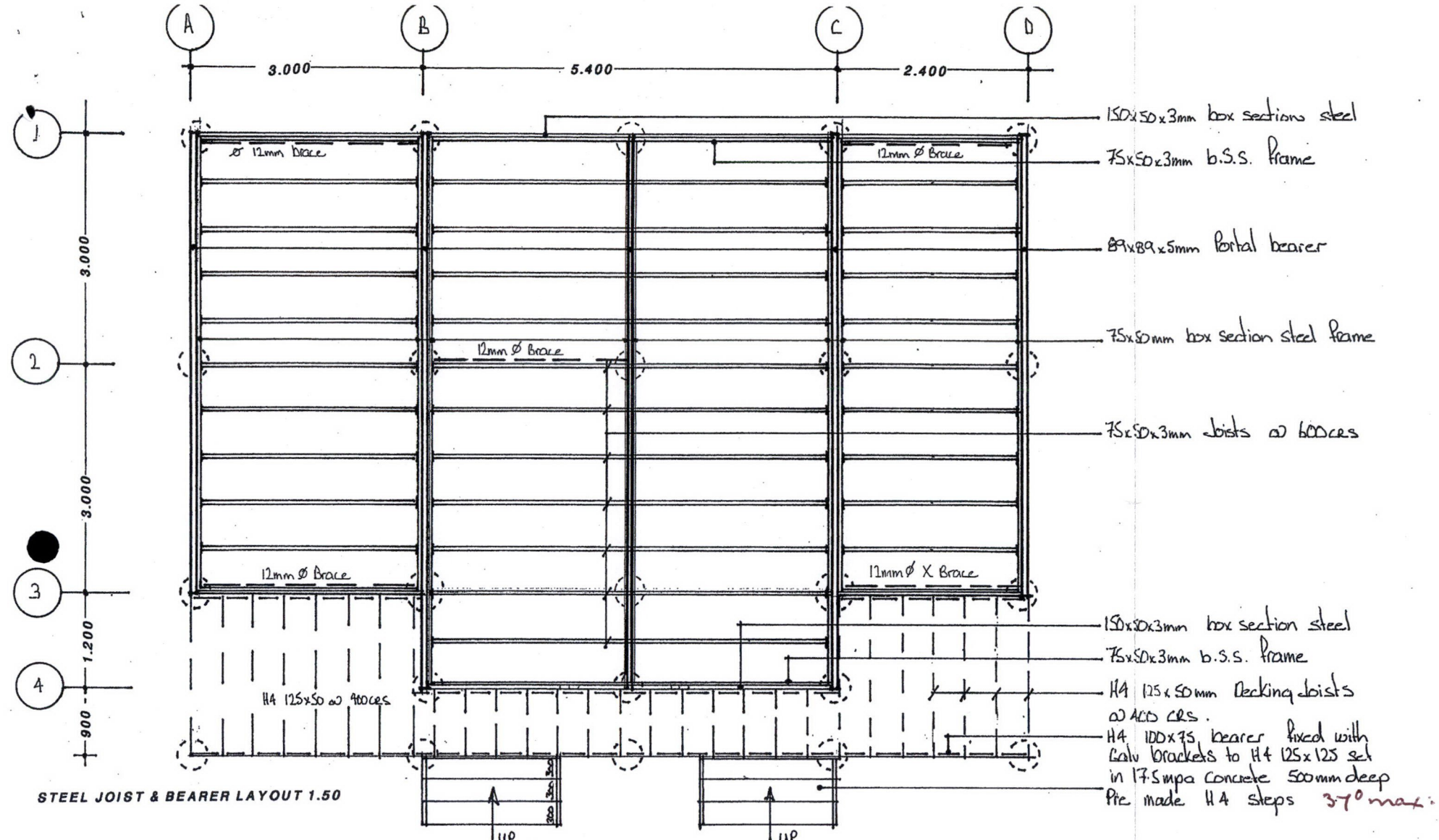
Checked for structural content  
for HACL 19/12/05

Far North District  
Council  
Received

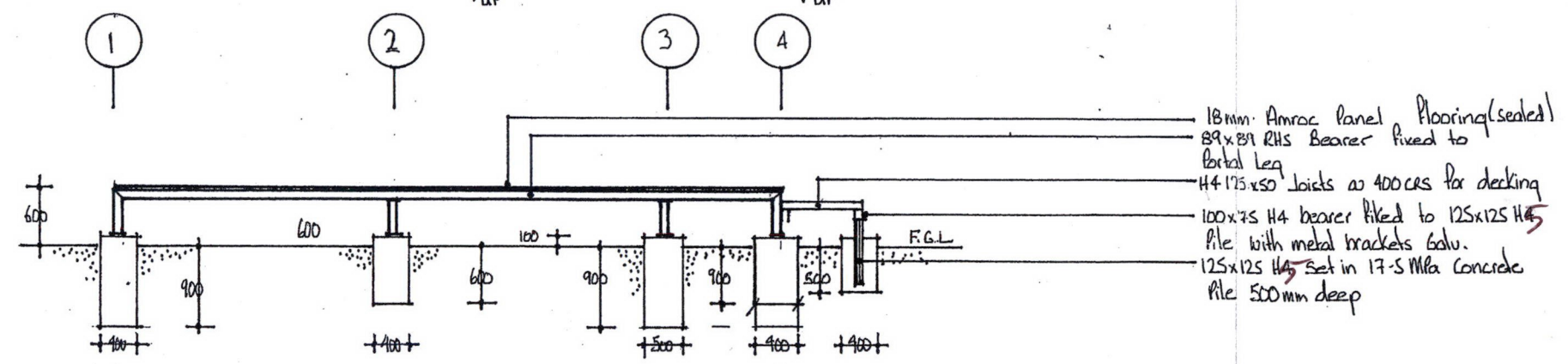


PGL  
© Design Copyright  
Parker Garages Ltd  
135 Meadowbank Road  
Meadowbank  
Auckland 1005  
Ph/fax 09-521 2137

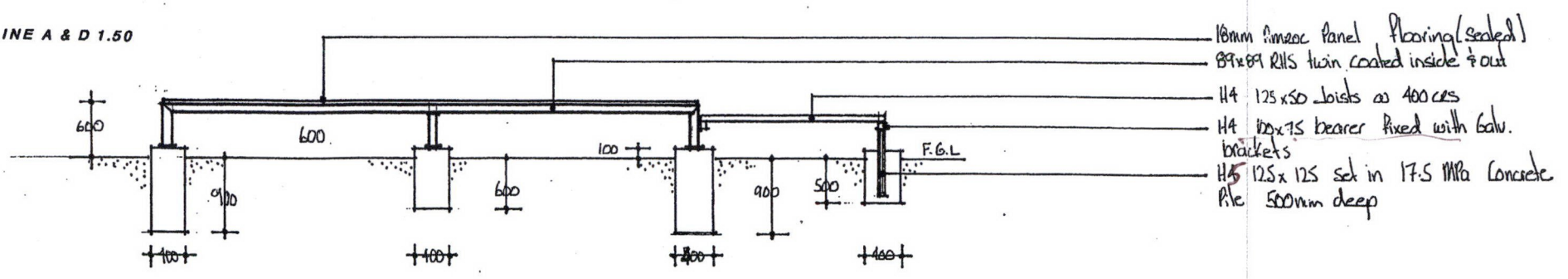
**COPYRIGHT**



STEEL JOIST & BEARER LAYOUT 1.50



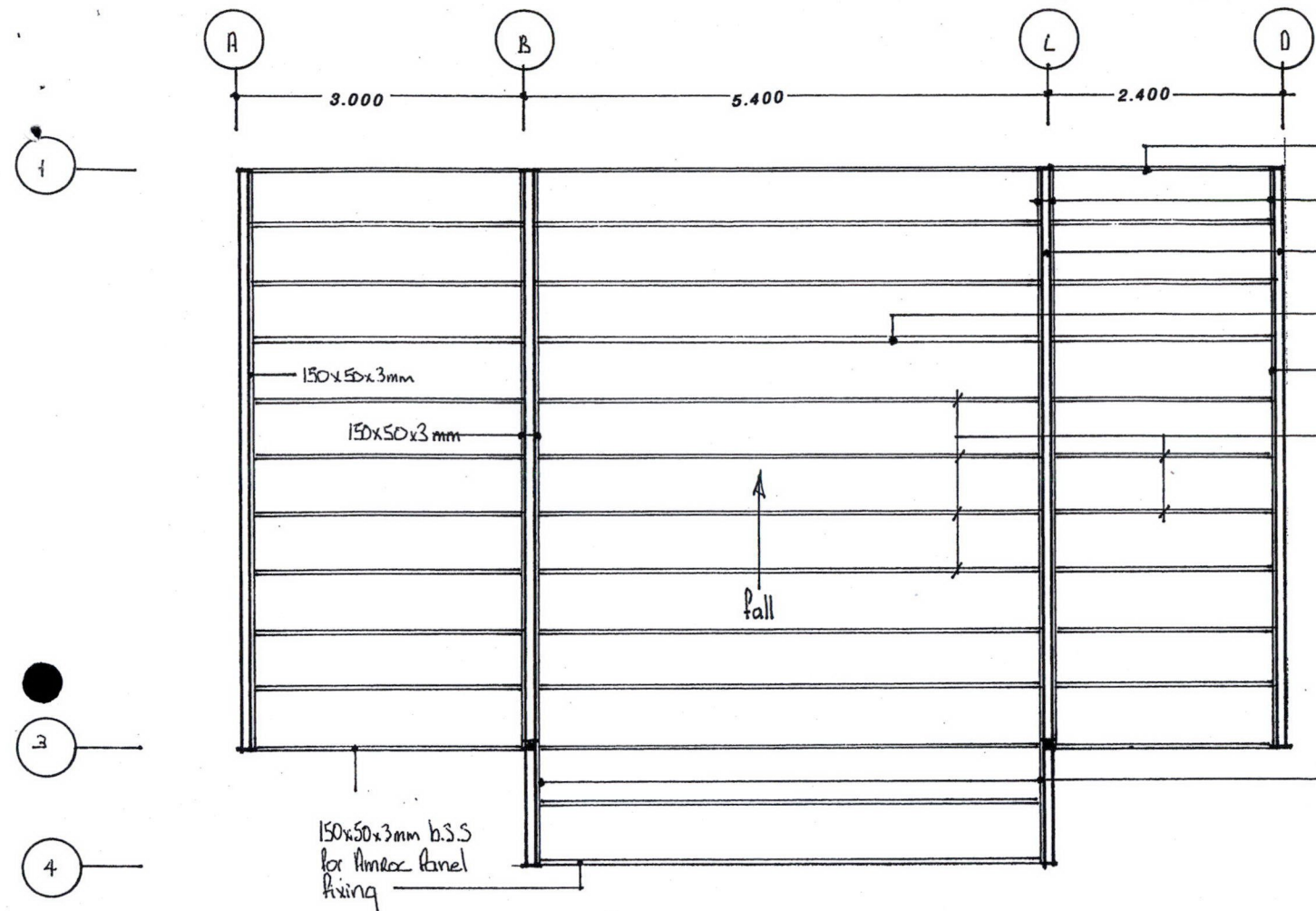
LINE A & D 1.50



LINE B & C 1.50

Checked for  
structural content  
*[Signature]*  
HACL 19/12/05

RHS Steel Joists  
Steel bearers  
H4 Joists



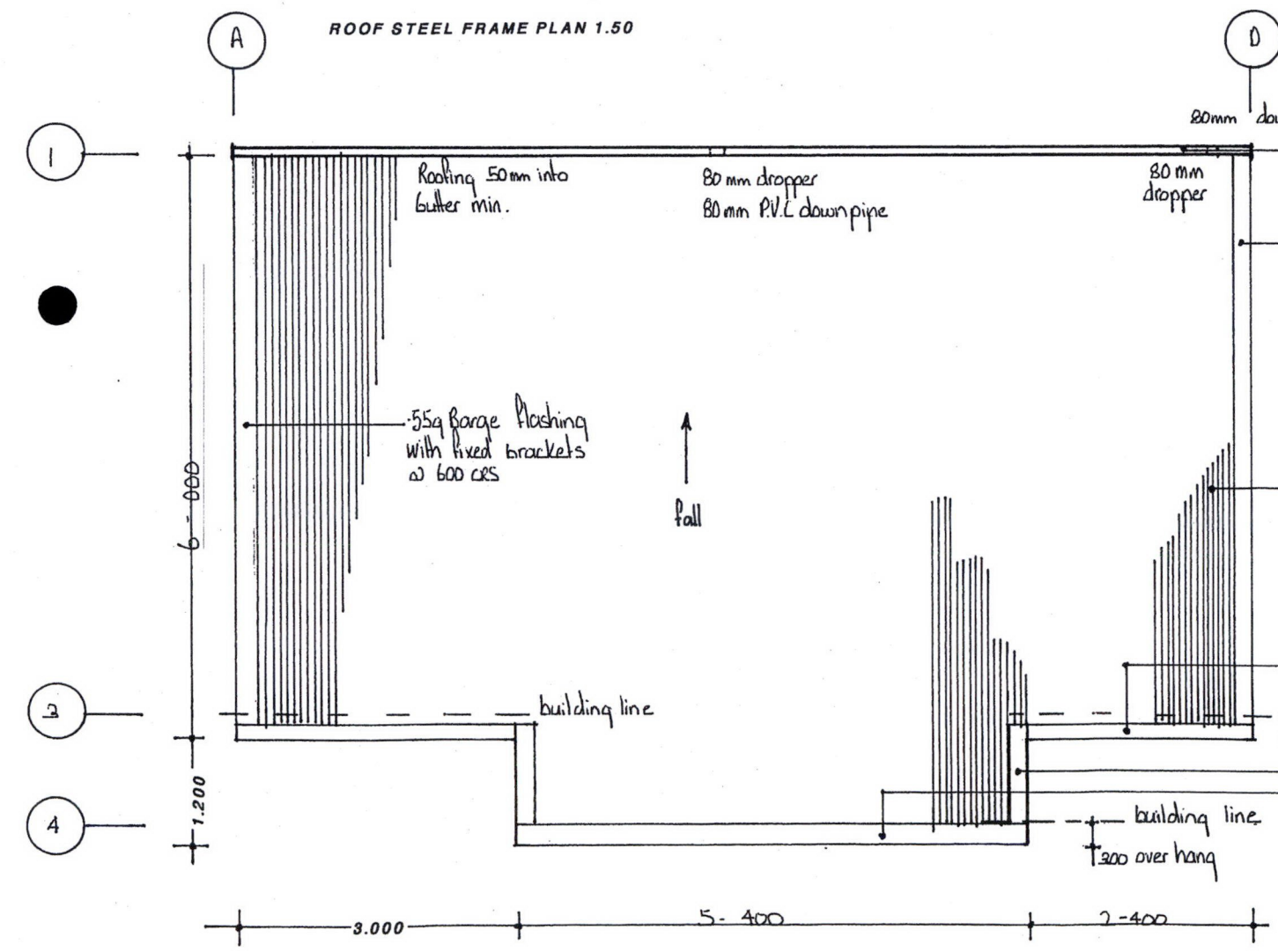
ROOF STEEL FRAME PLAN 1.50

Far North District  
Council  
Received



© Design Copyright  
Parker Garages Ltd  
135 Meadowbank Road  
Meadowbank  
Auckland 1005  
Ph/fax 09-521 2137

COPYRIGHT



ROOF PLAN 1.50

Checked for  
structural content  
*[Signature]*  
HGL 19/12/05





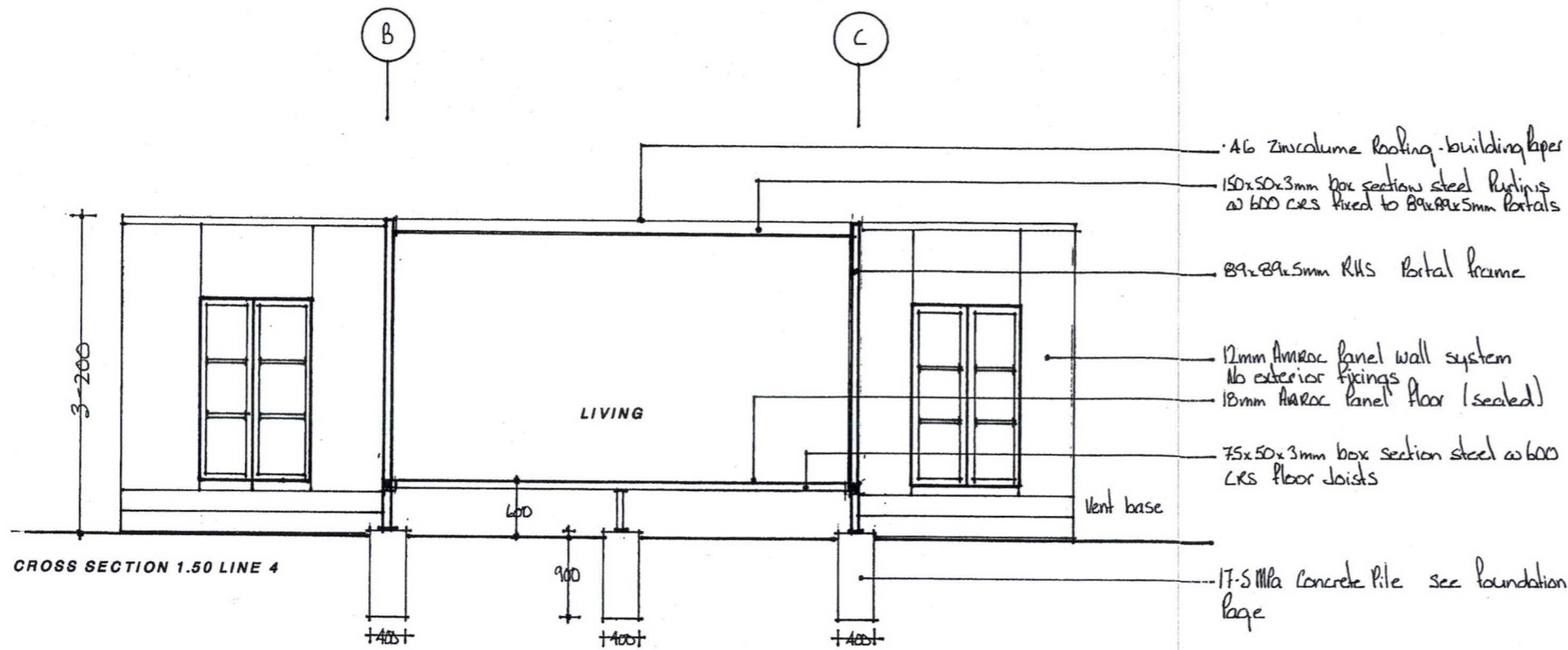
PGL

© Design Copyright

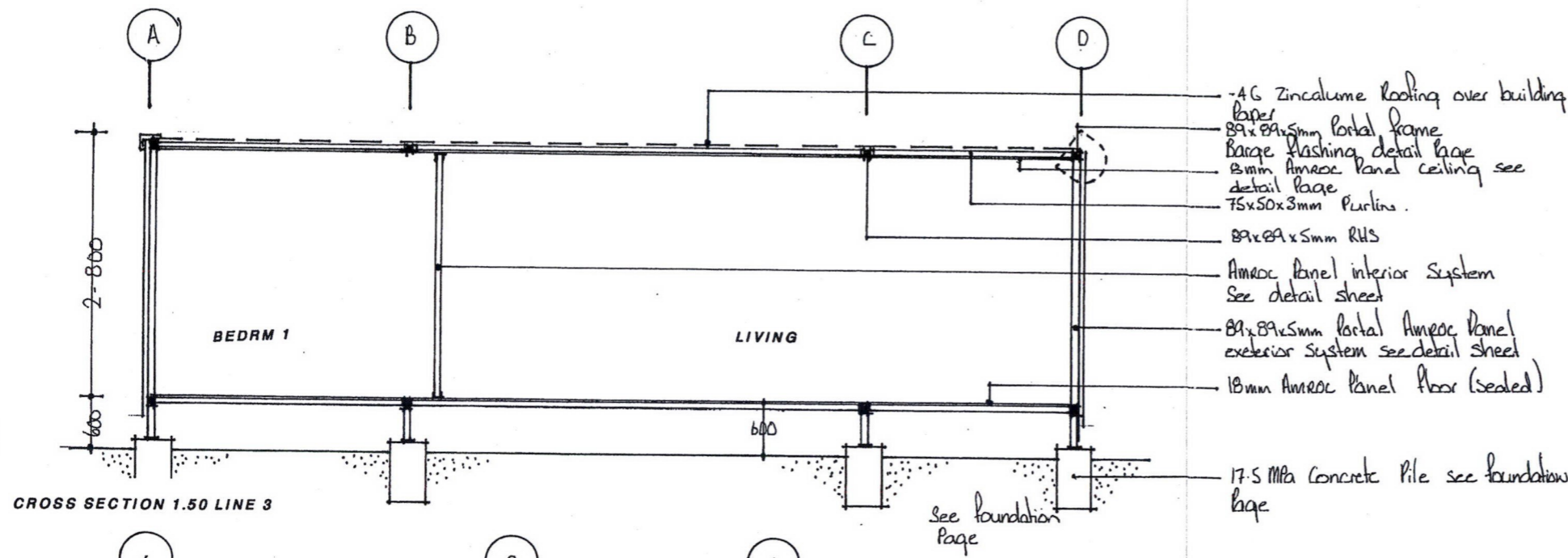
Parker Garages Ltd  
135 Meadowbank Road  
Meadowbank  
Auckland 1005  
Ph/fax 09-521 2137

Far North District  
Council  
Received

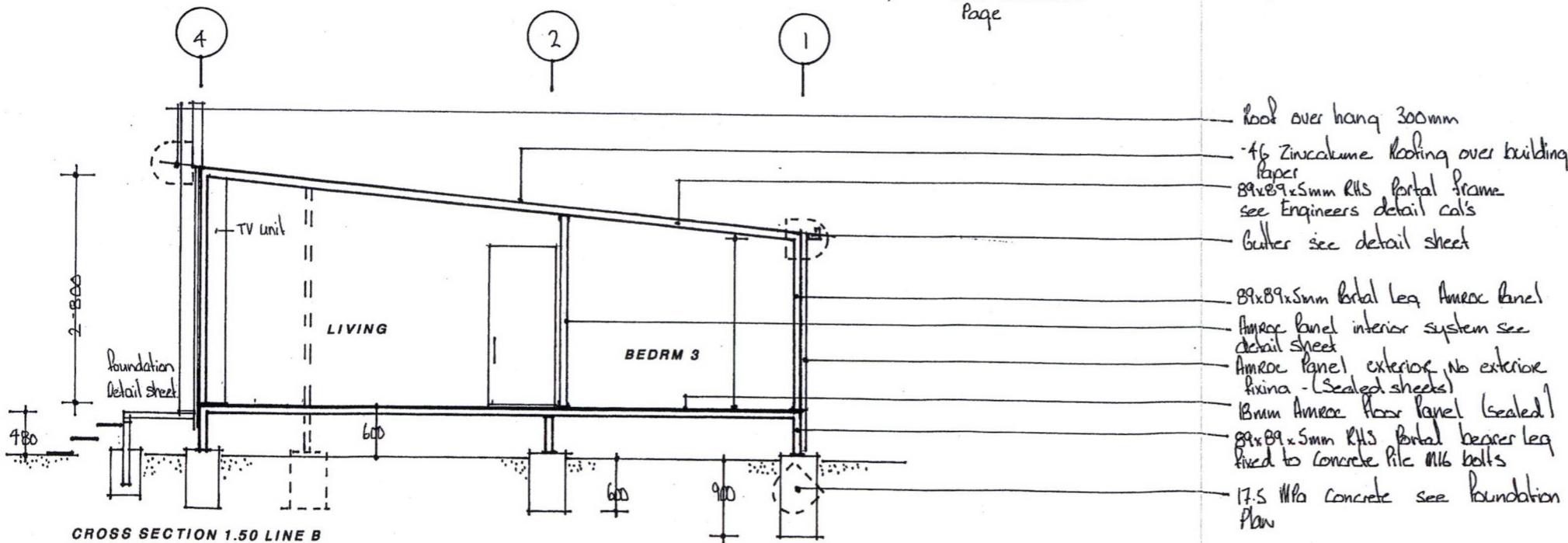
COPYRIGHT



- 4G Zincalume Roofing - building paper
- 150x50x3mm box section steel Purlins @ 600 c/c's fixed to 89x89x5mm Portals
- 89x89x5mm RHS Portal frame
- 12mm Amroc Panel wall system No exterior fixings
- 18mm Amroc Panel floor (sealed)
- 75x50x3mm box section steel @ 600 C/S Floor Joists
- 17.5 MPa Concrete Pile see foundation page



- 4G Zincalume Roofing over building paper
- 89x89x5mm Portal frame
- Barge Flashing detail page
- 8mm Amroc Panel ceiling see detail page
- 75x50x3mm Purlins
- 89x89x5mm RHS
- Amroc Panel interior System see detail sheet
- 89x89x5mm Portal Amroc Panel exterior system see detail sheet
- 18mm Amroc Panel floor (sealed)
- 17.5 MPa Concrete Pile see foundation page



- Roof over hang 300mm
- 4G Zincalume Roofing over building paper
- 89x89x5mm RHS Portal frame see Engineers detail cal's
- Gutter see detail sheet
- 89x89x5mm Portal leg Amroc Panel
- Amroc Panel interior system see detail sheet
- Amroc Panel exterior No exterior fixings - (Sealed sheets)
- 18mm Amroc floor panel (sealed)
- 89x89x5mm RHS Portal bearer leg fixed to concrete Pile M16 bolts
- 17.5 MPa concrete see foundation plan

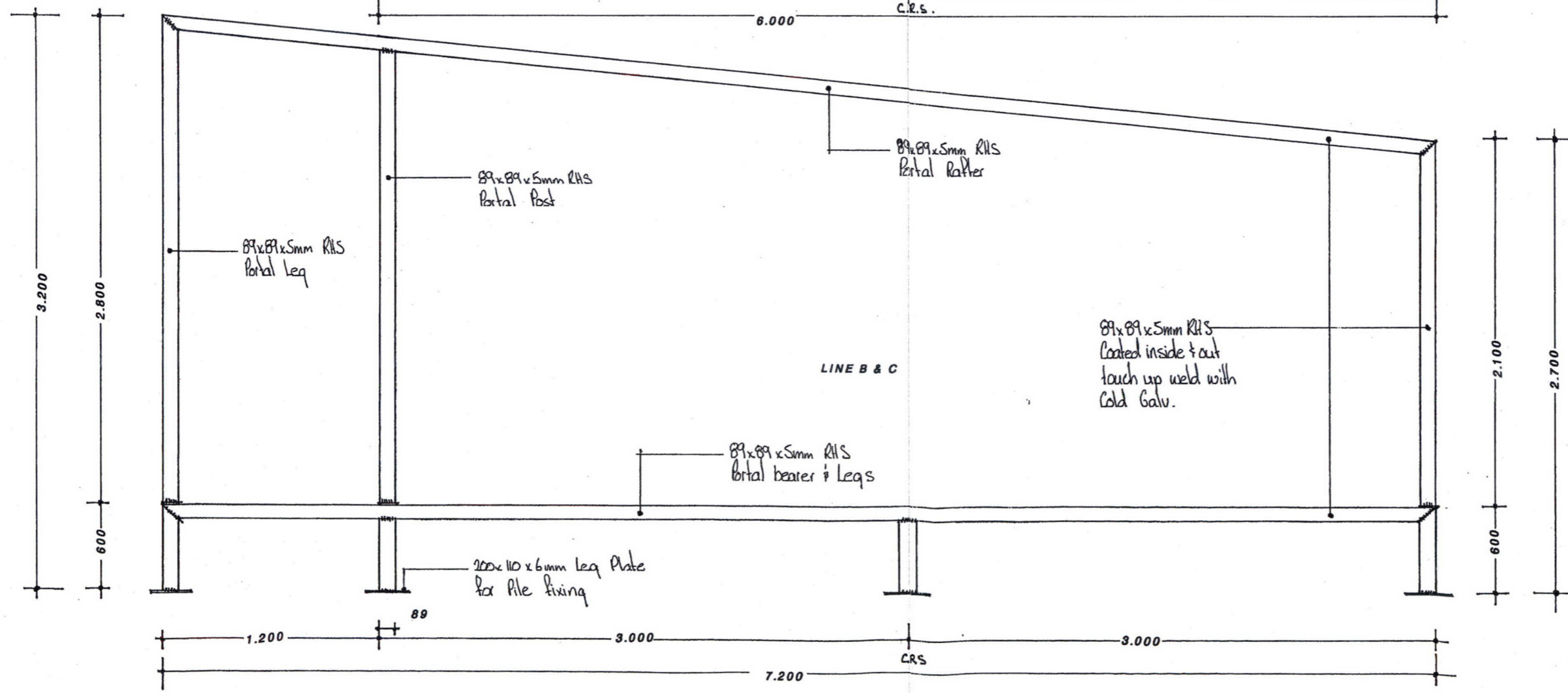
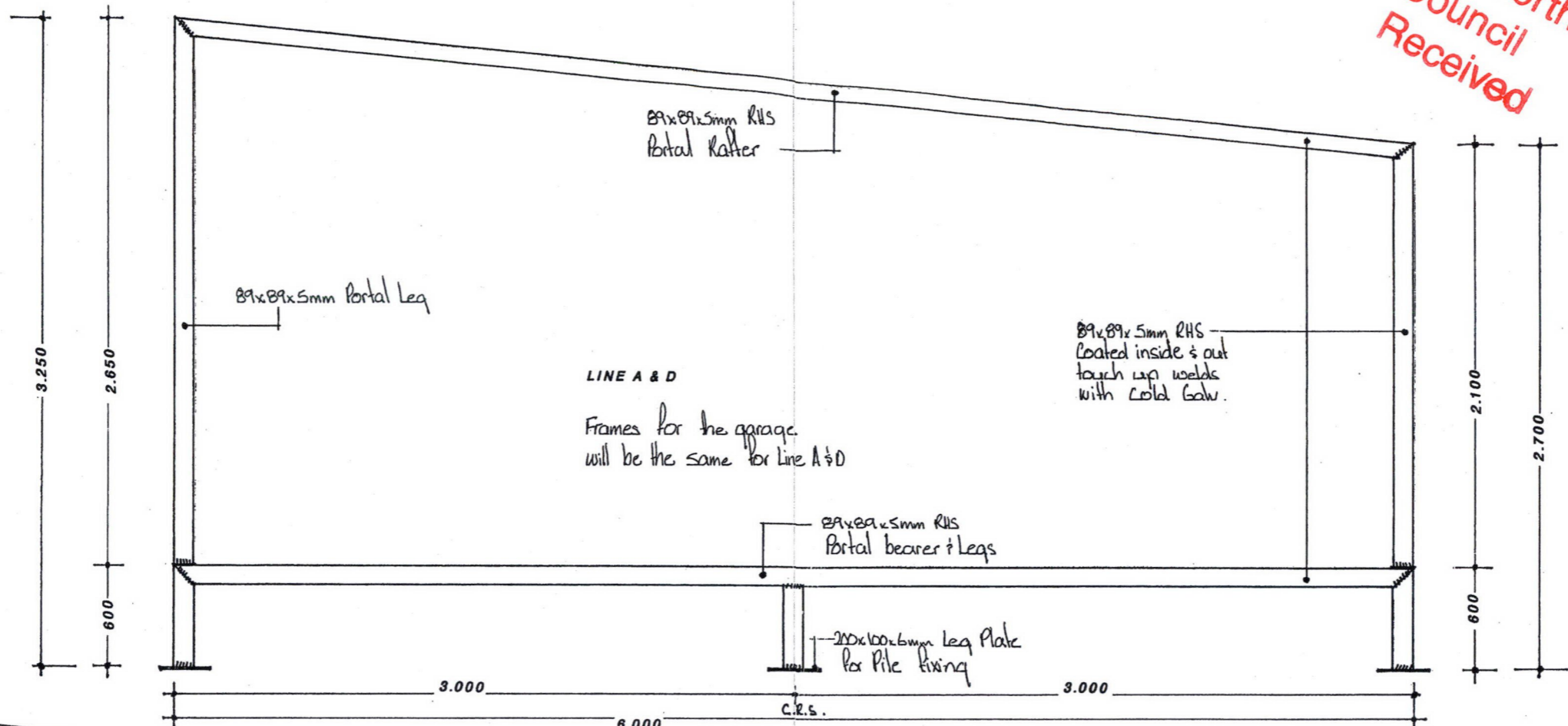
Checked for structural content  
for HACC 19/12/05



PGL  
© Design Copyright

Far North District  
Council  
Received

Copyright  
Parker Garages Ltd  
135 Meadowbank Road  
Meadowbank  
Auckland 1005  
Ph/fax 09-521 2137



*[Signature]*  
HGCL 19/12/05

Portals 89x89x5mm



PGL

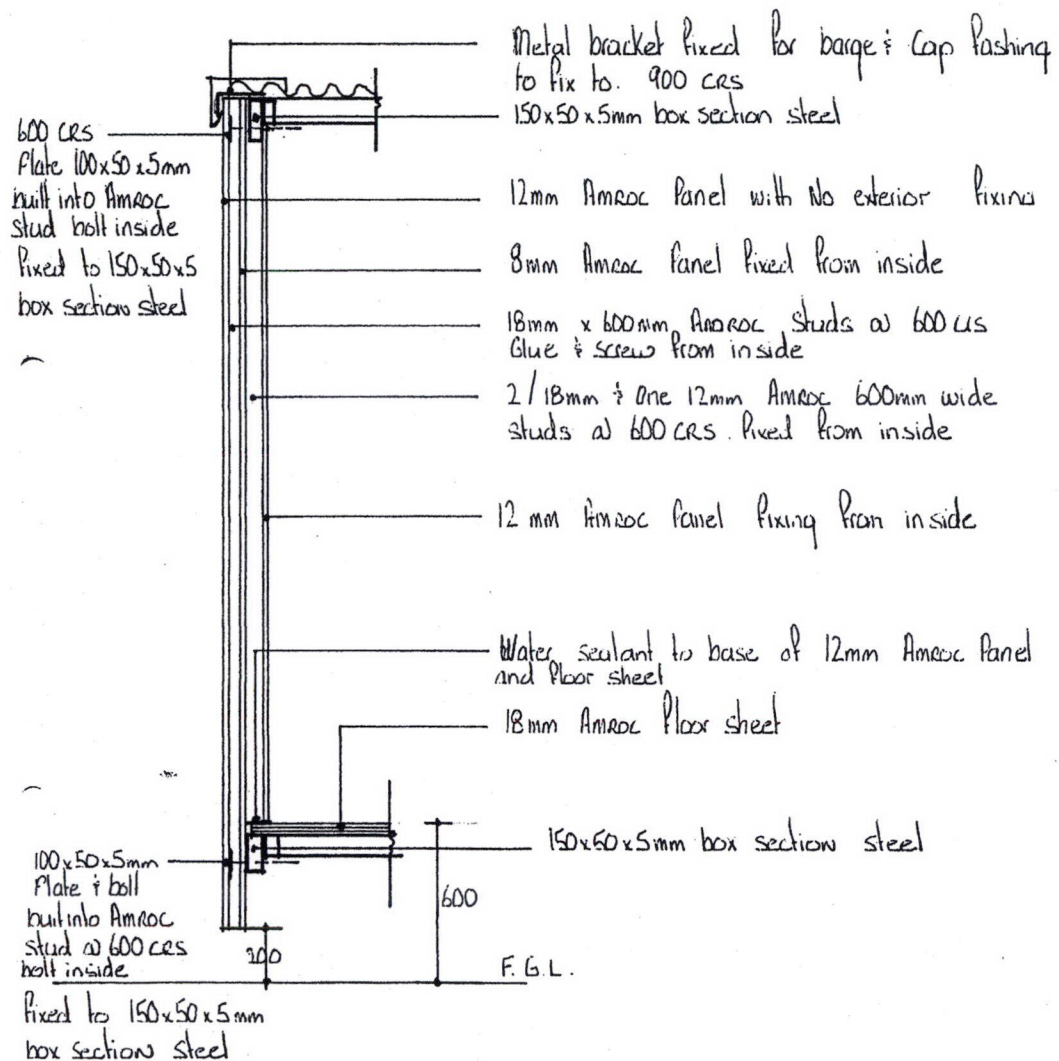
© Design Copyright

**COPYRIGHT**

Parker Garages Ltd  
135 Meadowbank Road  
Meadowbank  
Auckland 1005  
Ph/fax 09-521 2137

Far North District  
Council  
Received

EXTERIOR AMROC PANEL



AMROC NZ LTD copyright

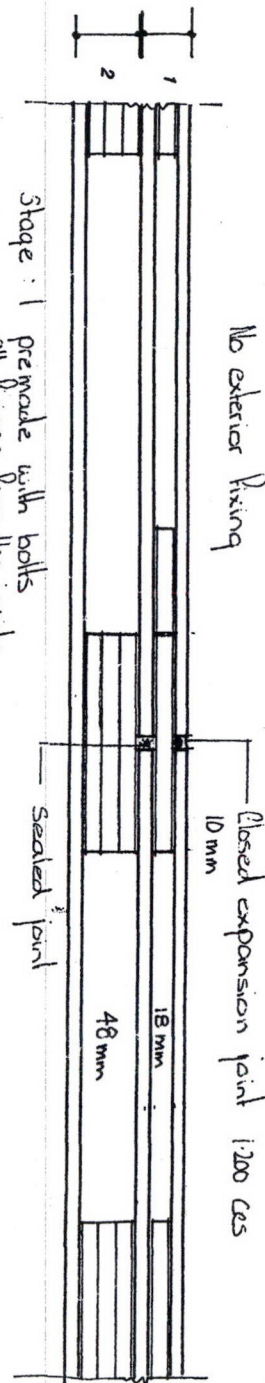
*Paul*  
scale 1:20

AMROC NZ LTD copyright  
*Paul*  
scale 1:50

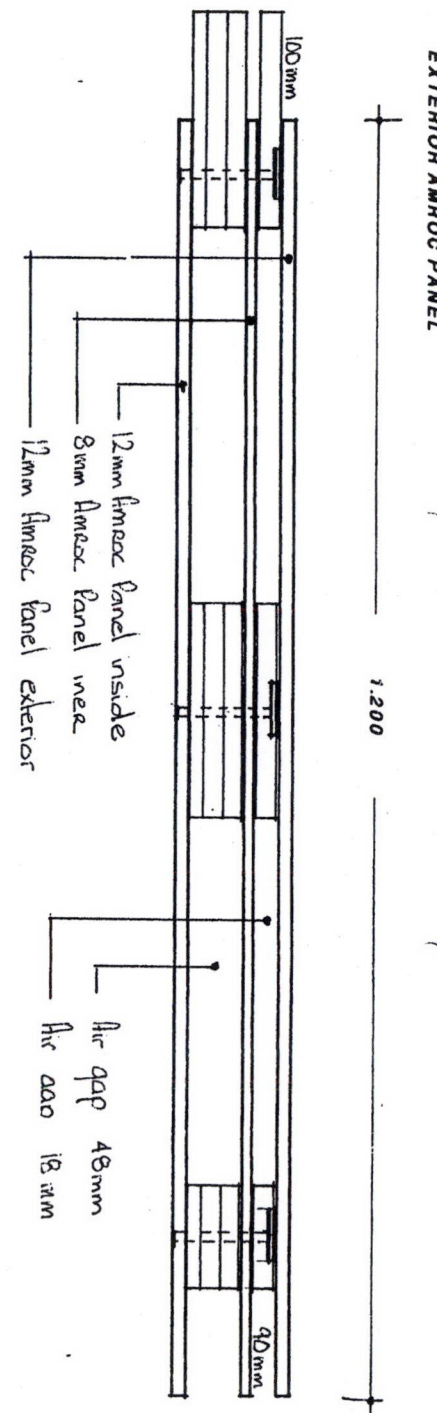
E1

Stage 1: pre-made with bolts  
all fixings from the inside

Stage 2: constructed on site allowing  
for services



All Amroc studs are glued & screwed @ 600 CRS  
from the inside.



E2

*Paul*  
19/12/05 HGCL

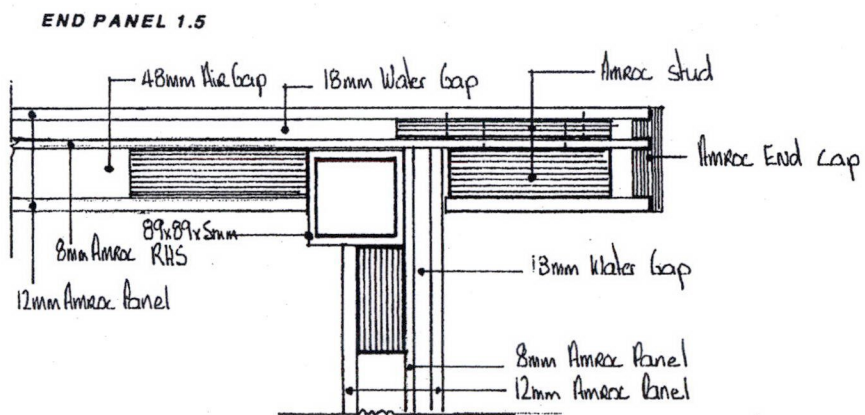
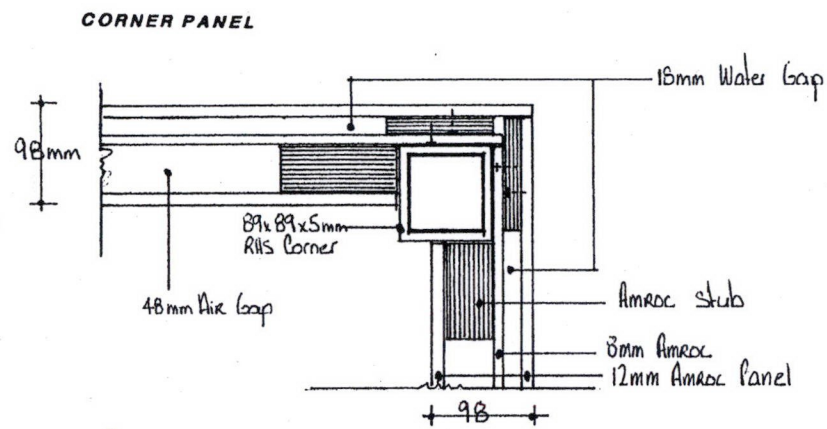
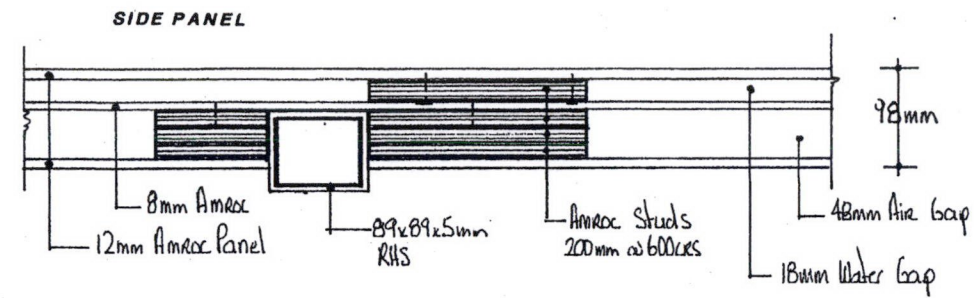
Far North District  
Council  
Received



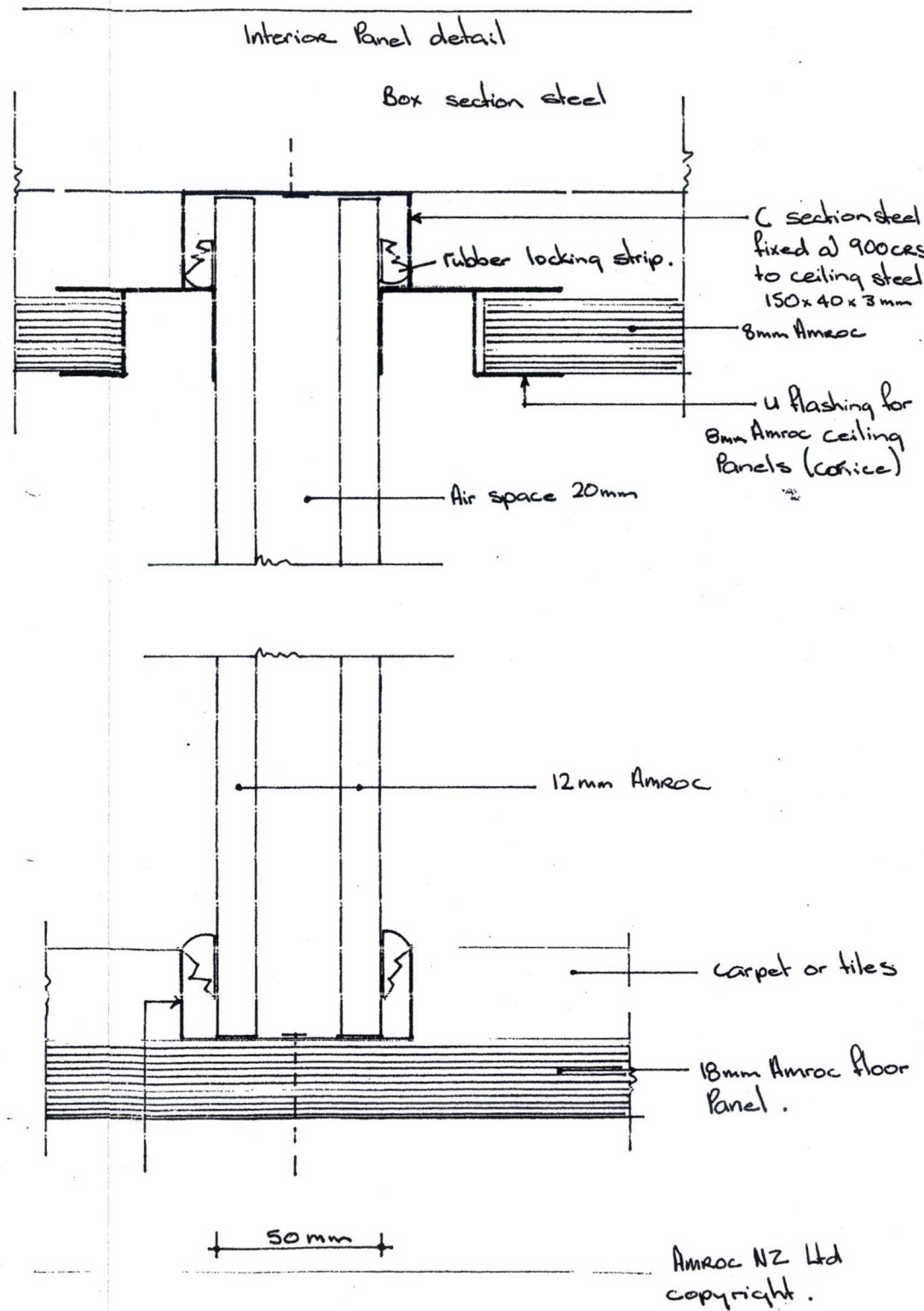
PGL

© Design Copyright

**COPYRIGHT**  
Parker Garages Ltd  
135 Meadowbank Road  
Meadowbank  
Auckland 1005  
Ph/fax 09-521 2137



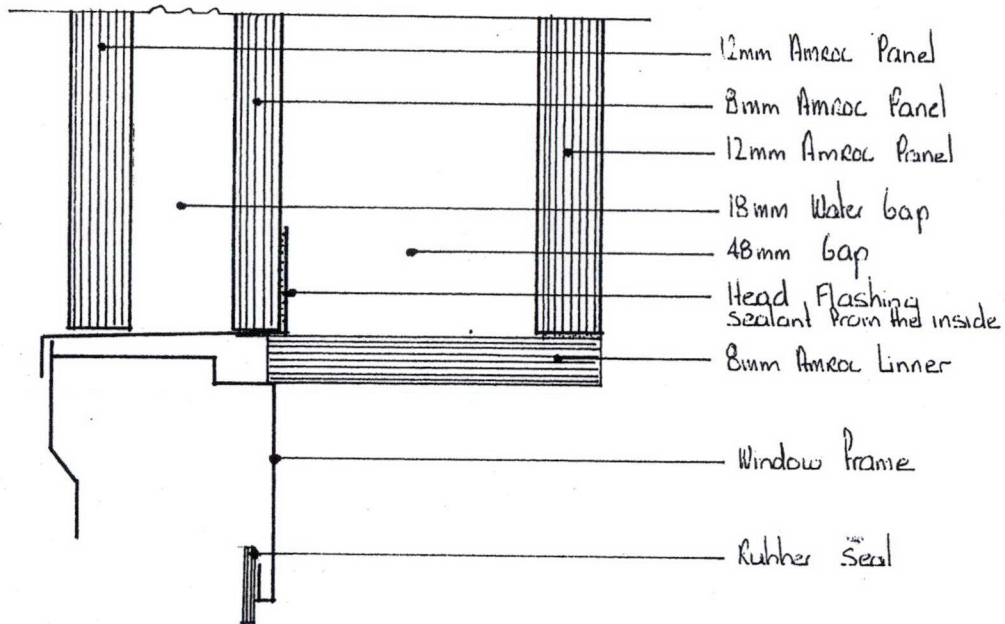
COPYRIGHT



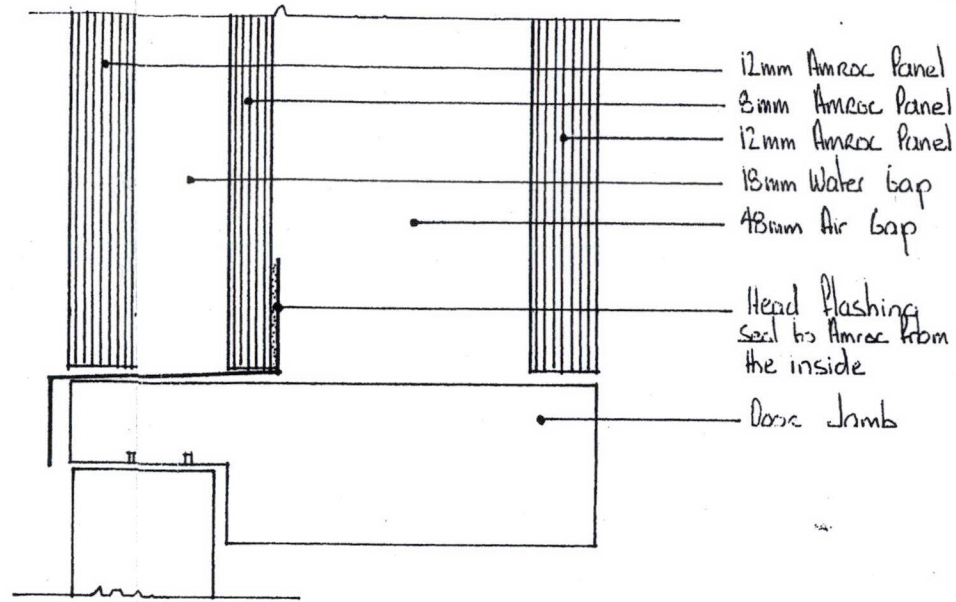
Far North District Council  
Received

  
PGL  
© Design Copyright  
Parker Garages Ltd  
135 Meadowbank Road  
Meadowbank  
Auckland 1005  
Ph/fax 09-521 2137

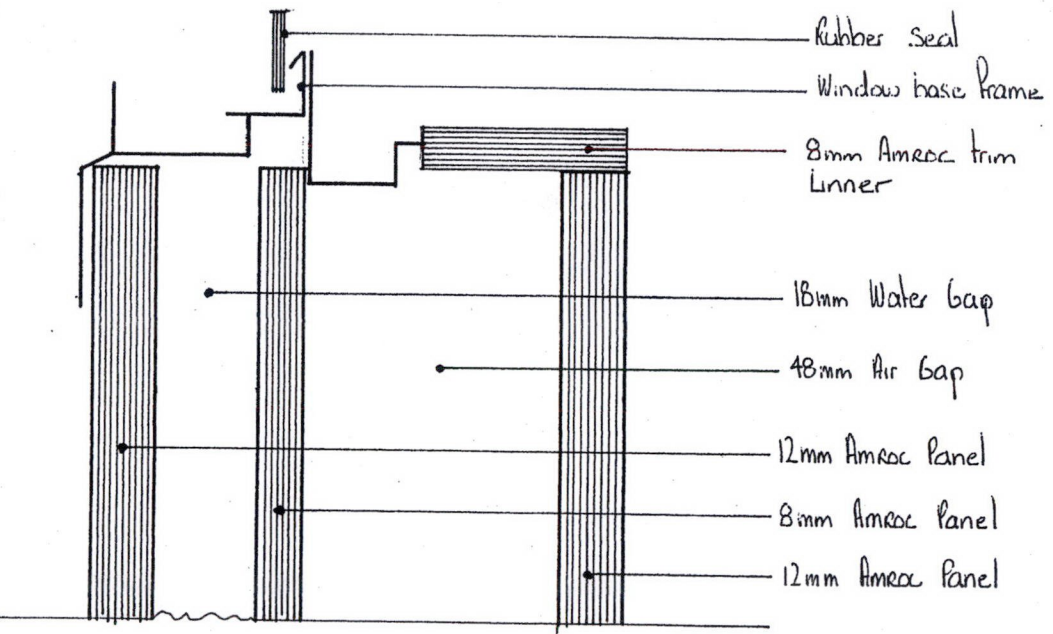
WINDOW HEAD DETAIL



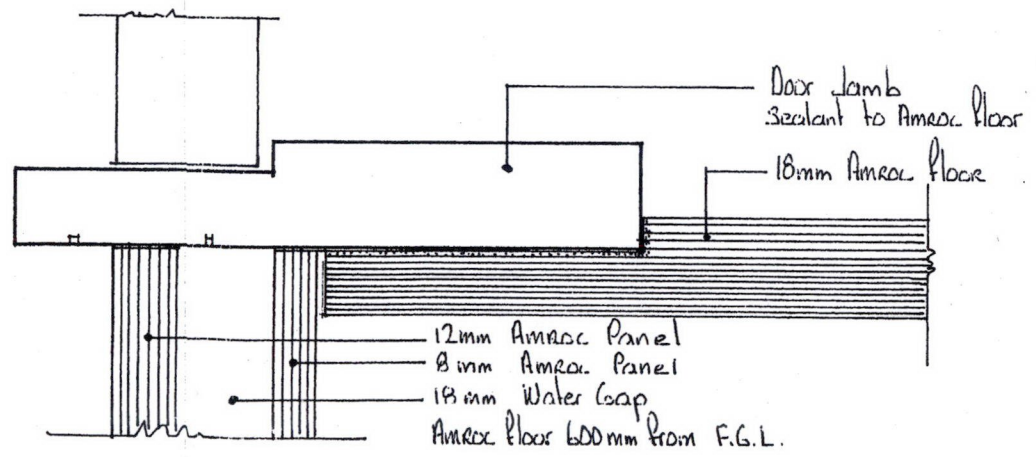
DOOR HEAD DETAIL



WINDOW BASE DETAIL



DOOR BASE DETAIL



Window installed & sealed before 12mm Amroc inside panel fixed

W1

AMROC NZ LTD copyright

Amroc Floor 600mm from F.G.L.

AMROC NZ LTD copyright

D1



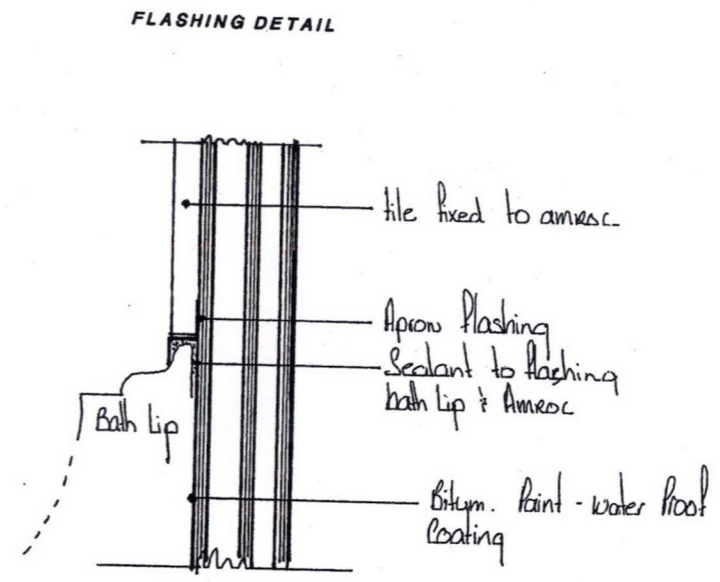
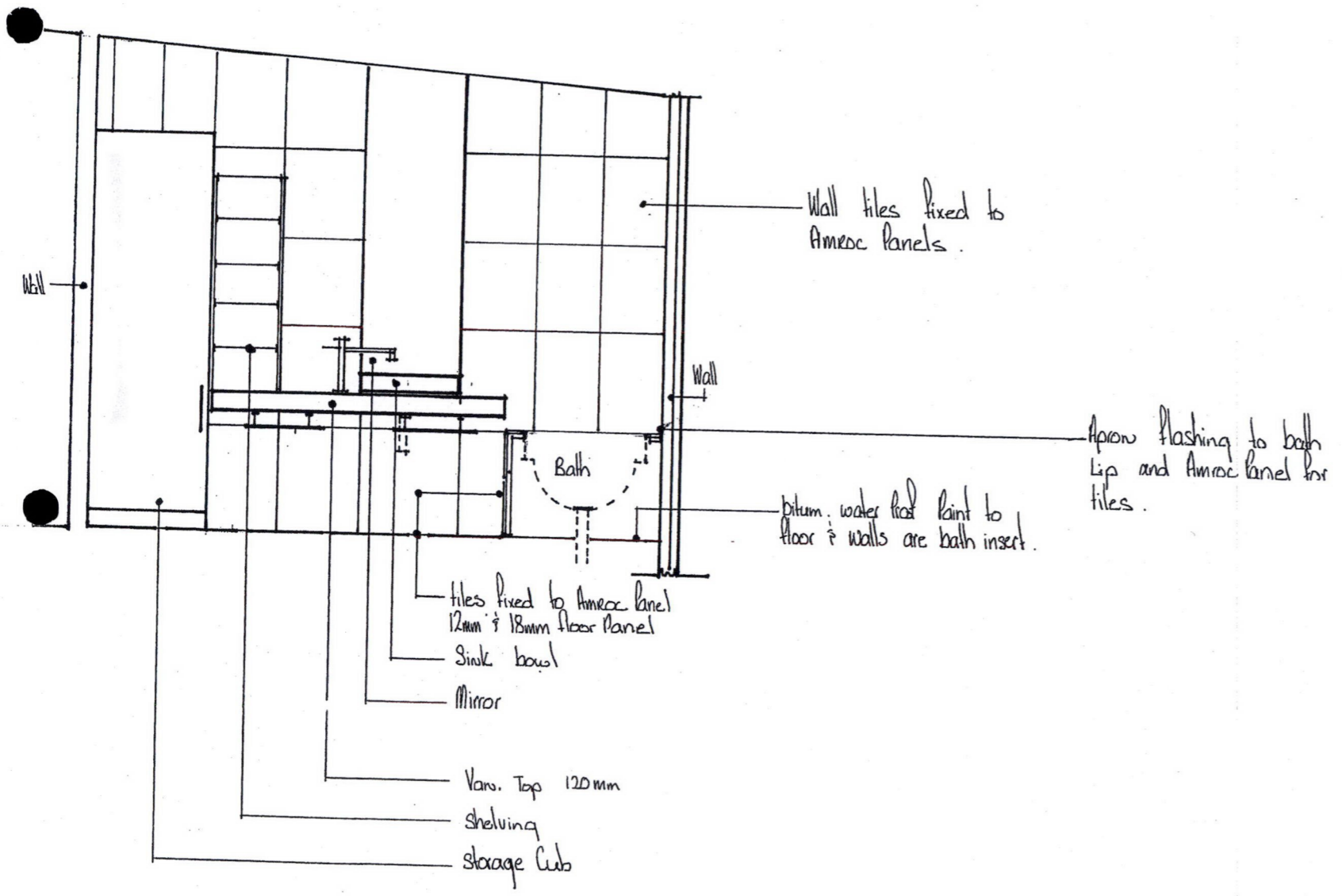
PGL

© Design Copyright  
**COPYRIGHT**

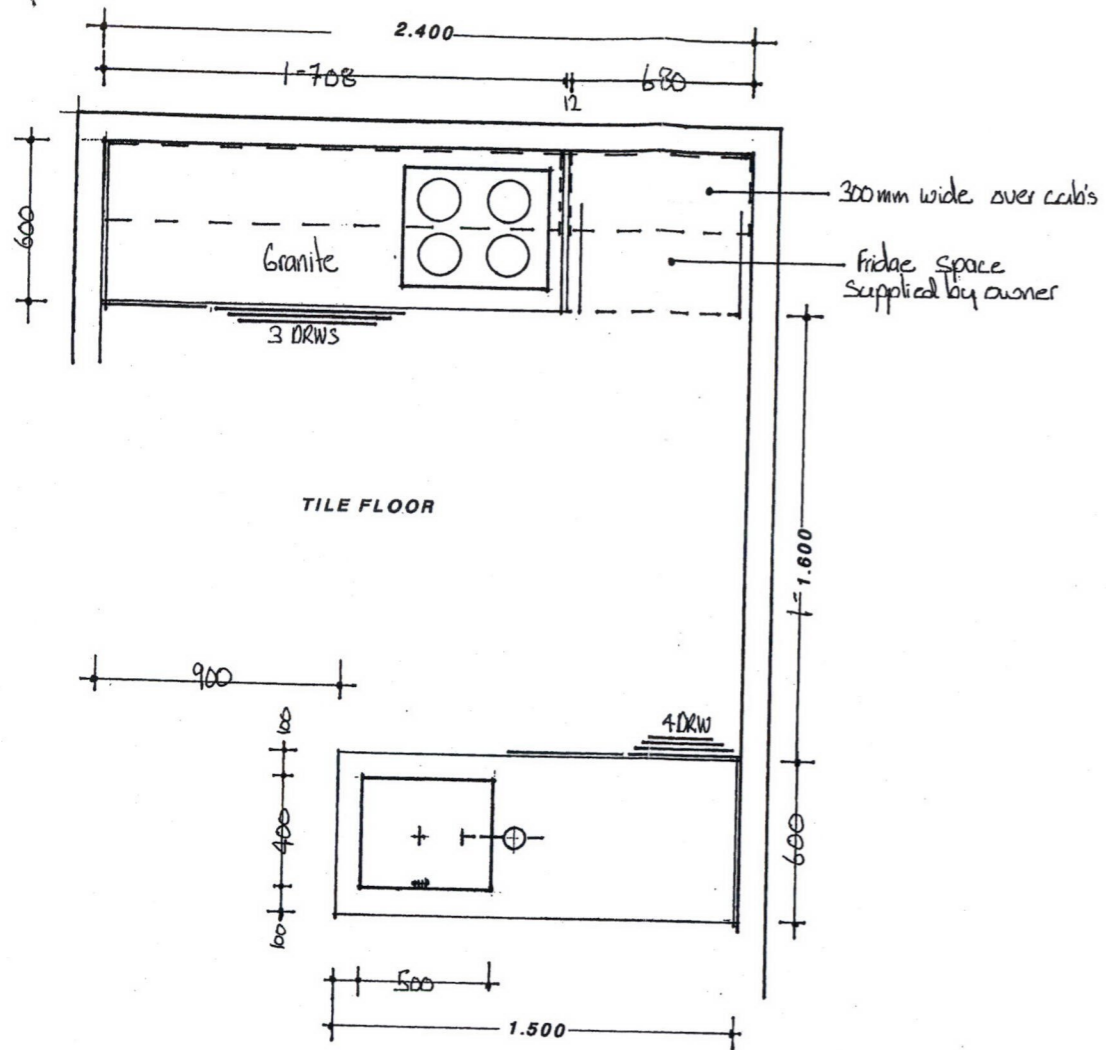
Parker Garages Ltd  
135 Meadowbank Road  
Meadowbank  
Auckland 1005  
Ph/fax 09-521 2137

Far North District  
Council  
Received

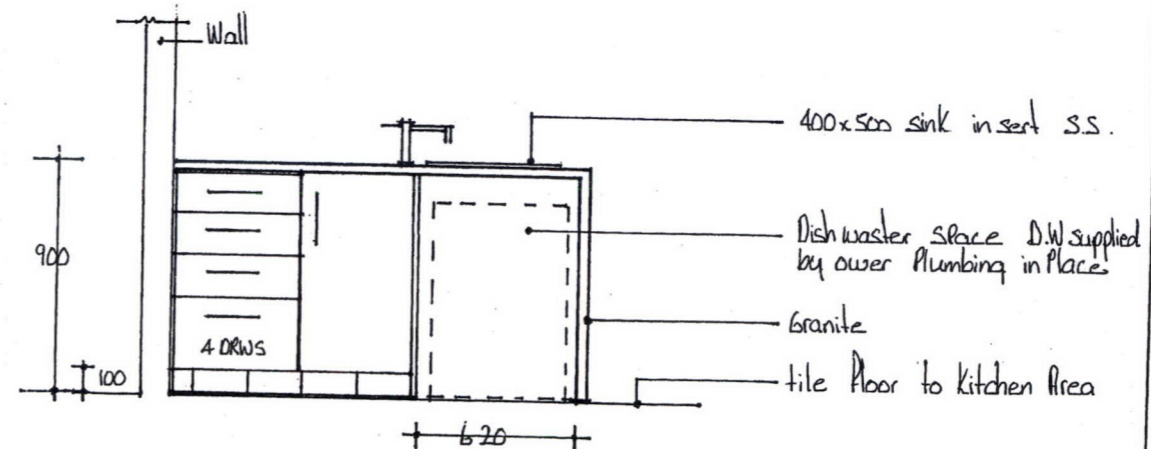
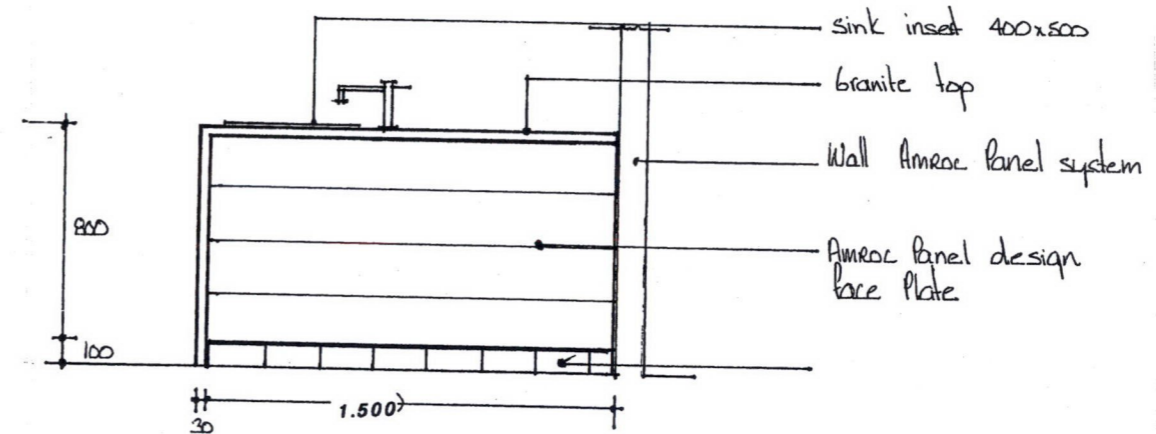
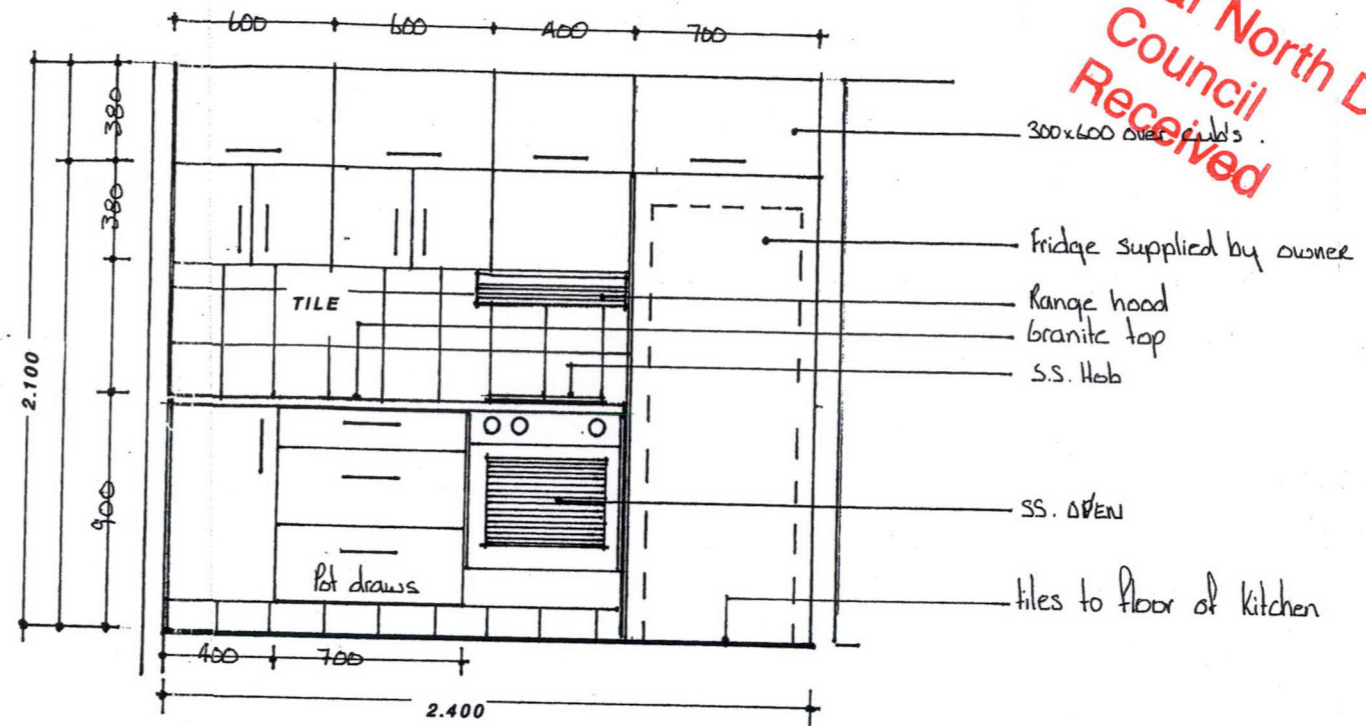
BATH ROOM FITTINGS 1.20



Bath flashing



KITCHEN PLAN 1.20



COPYRIGHT  
Far North District Council  
Received



PGL  
© Design Copyright

Parker Garages Ltd  
135 Meadowbank Road  
Meadowbank  
Auckland 1005  
Ph/fax 09-521 2137

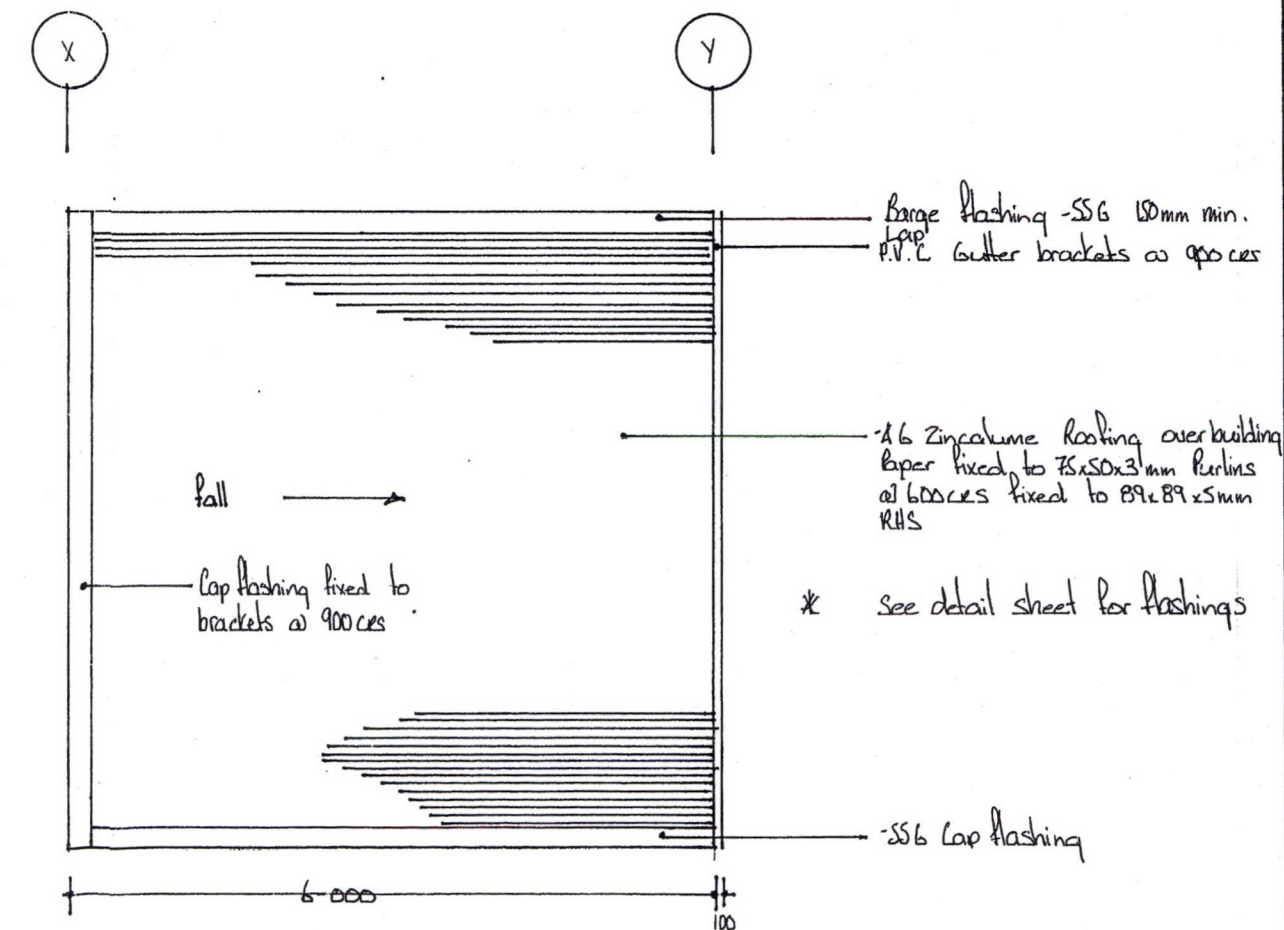
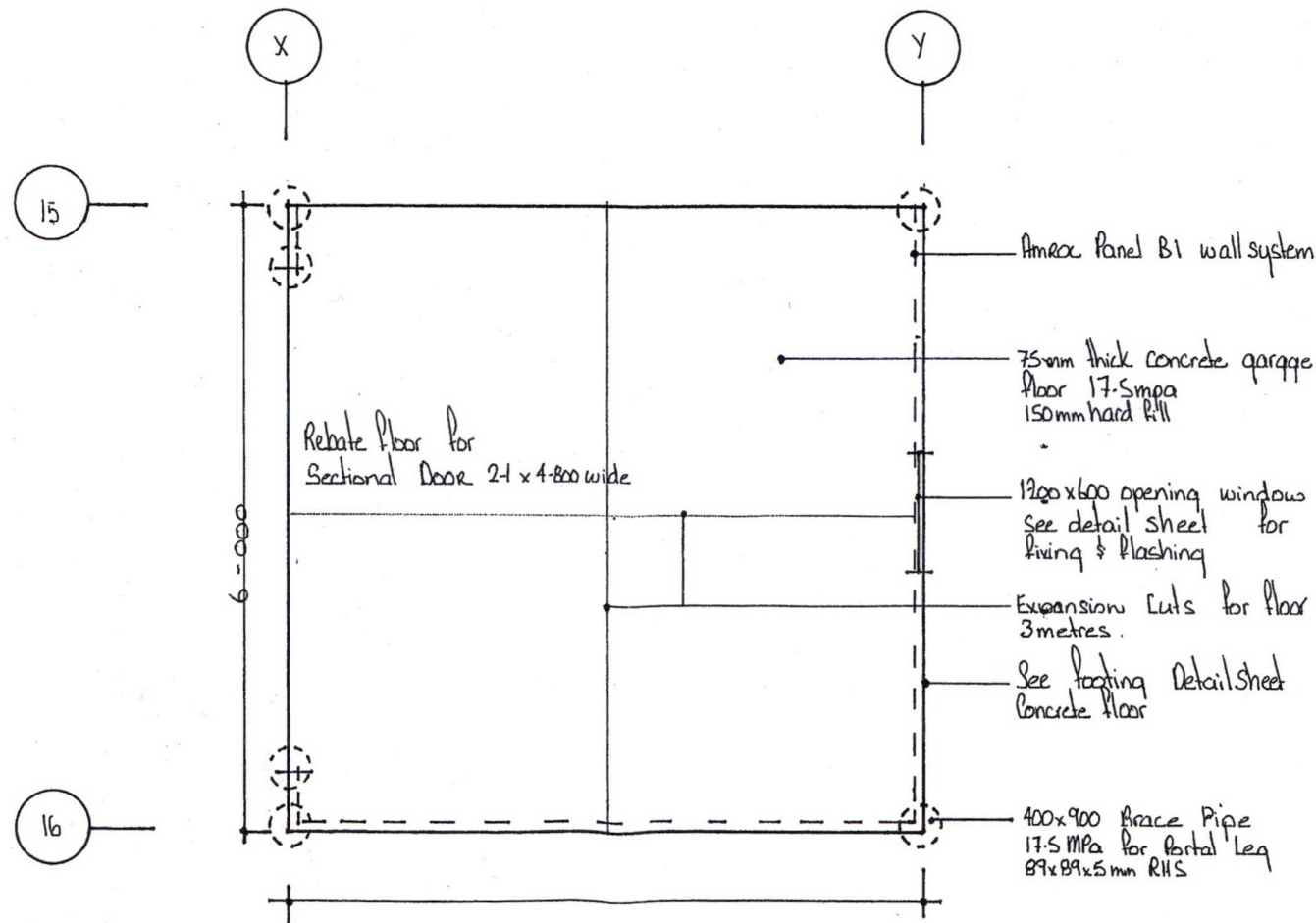
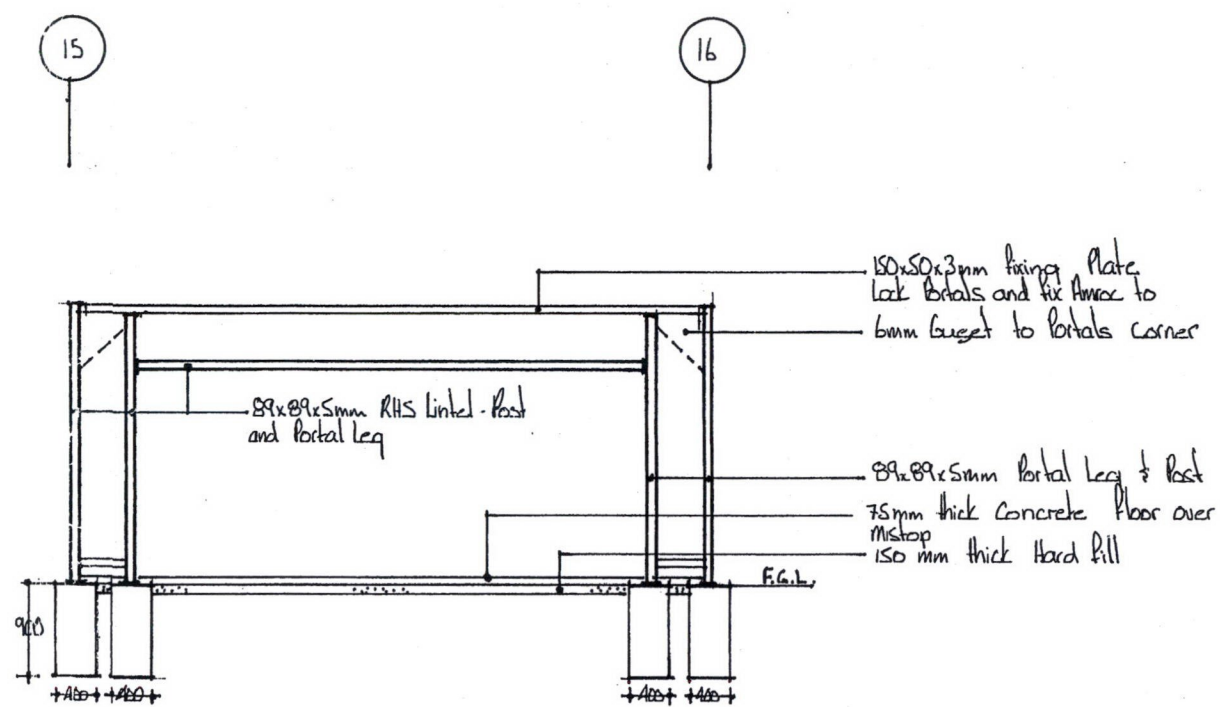
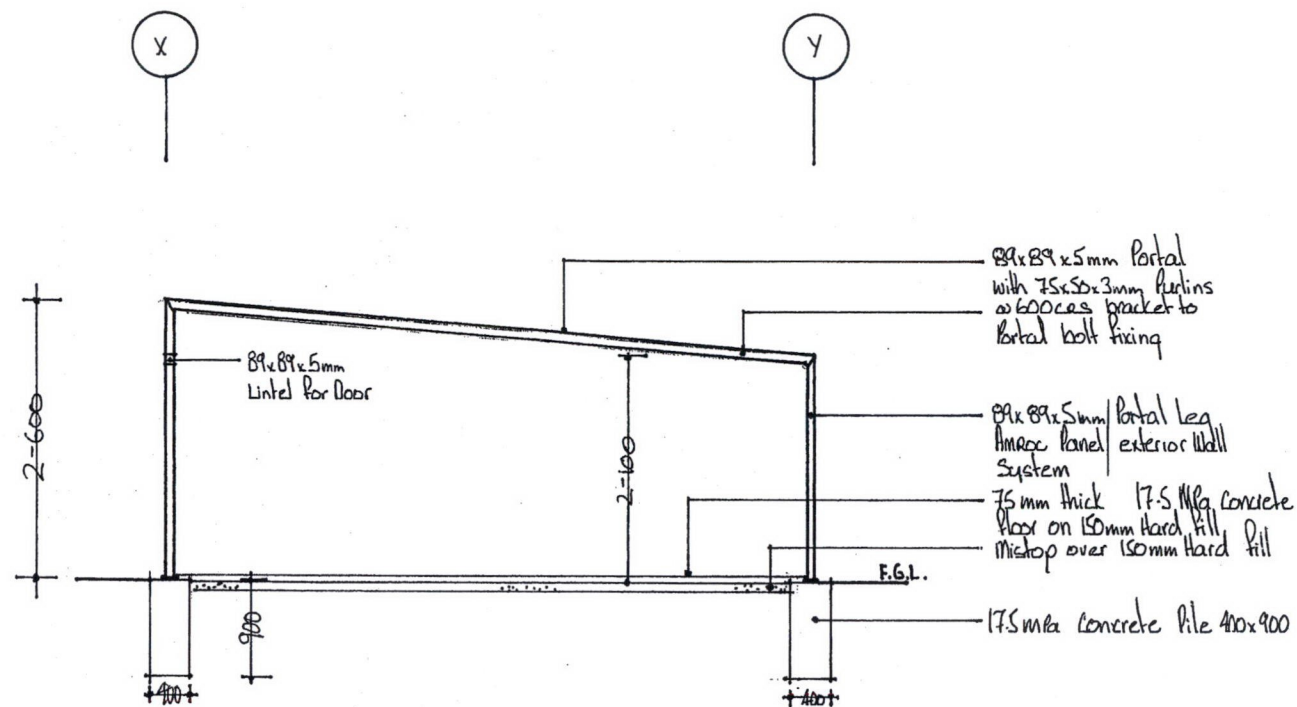


PGL

© Design Copyright

Far North District Council  
Received

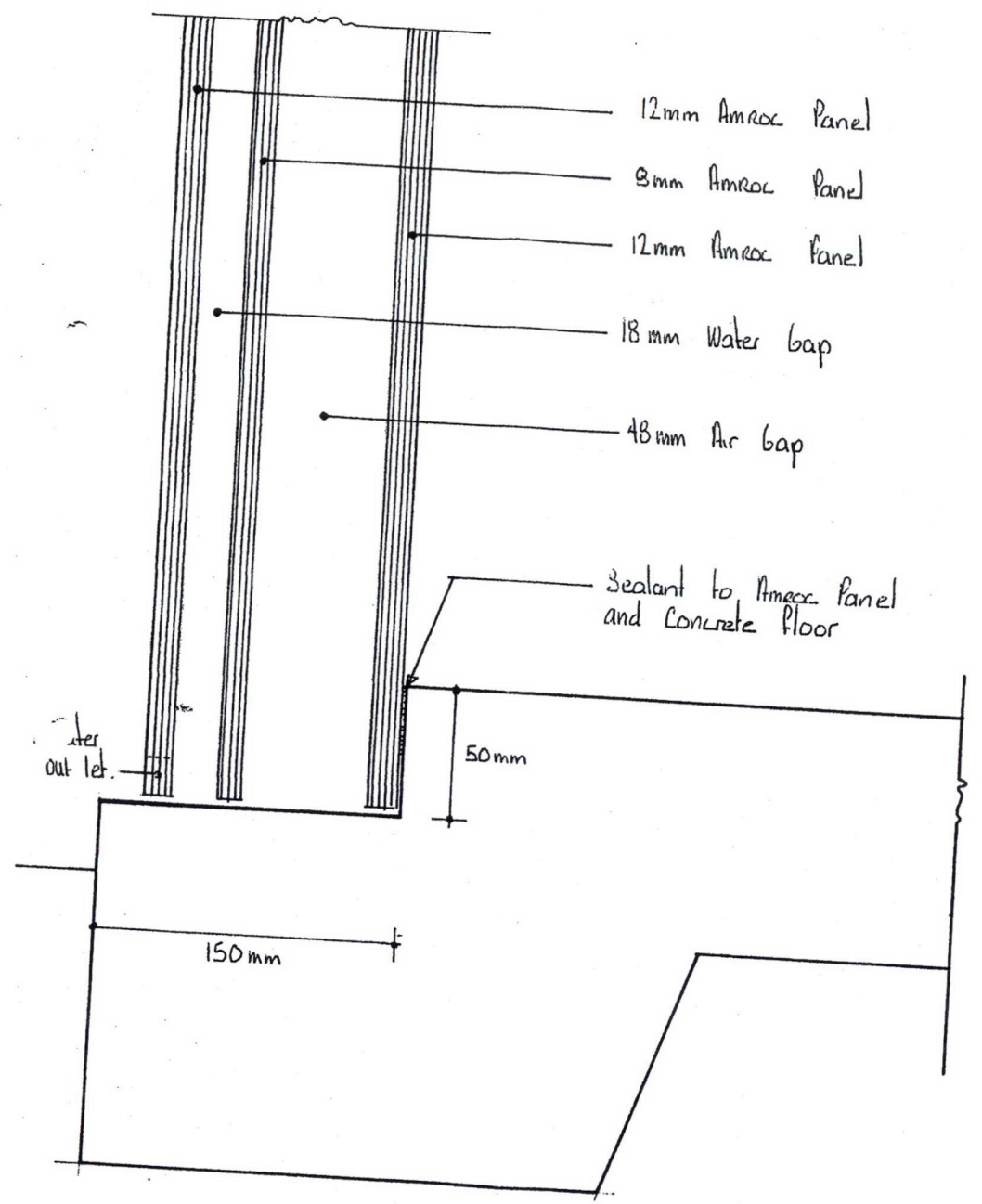
Parker Garages Ltd  
135 Meadowbank Road  
Meadowbank  
Auckland 1005  
Ph/fax 09-521 2137



*Handwritten signature*  
HACL 19/12/05  
Garage sheet



CONCRETE FLOOR DETAIL



AMROC NZ LTD copyright C1

Far North District Council  
Received



PGL  
© Design Copyright

Parker Garages Ltd  
135 Meadowbank Road  
Meadowbank  
Auckland 1005  
Ph/fax 09-521 2137

Concrete footing detail

BL 2006 - 1192

SCANNED